

PHOTO: CESAR RODRIGUEZ DURAN



Institute principal Joy Solomon on Open Day with print maker Theresa Pateman and Barnet's deputy mayor Cllr Hugh Raynor and his wife Susan.



PHOTO: ANDREW BOTTERILL

▲ The Free Church has been welcoming members of a Wembley congregation with nowhere to have weddings. Dr Rev Ian Tutton said, "It's very nice to have them and everyone likes these joyful occasions on the square."



How's this for a Garden Suburb view? Our thanks to Denis Baron for pictures of his rambling roses as they cover trees and hedges in his Holne Chase garden.

Smoked salmon bagels, champagne and a cake made by Lorna Page accompanied the usual party atmosphere on the Suburb News distribution day in June which saw the 100th issue going out. ▶



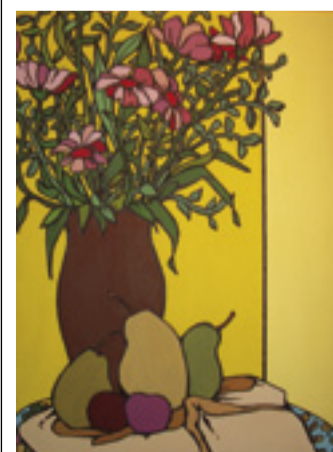
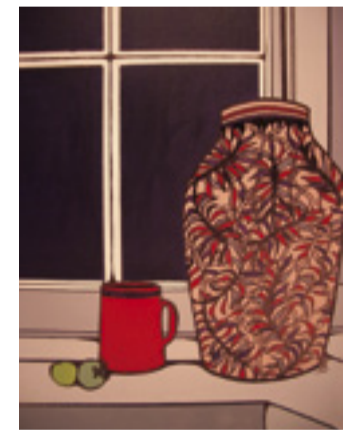
Autumn shows for Garden Suburb Gallery

The first show, on now, is the culmination of a relationship between Shizue Takahashi, the St Martins trained artist and the Gallery. Twelve years ago she was intrigued by the little gallery in Hampstead Way and brought some of her work which was successfully shown. Shizue has since sold many of her fresh watercolours of local landscapes and been exhibited at the Mall Gallery shows of the Watercolour Society. She has a clear talent for teaching which leads to the current show not only of her own work but also that of students in her ST Art Group. They have been working together for five years and, says Shizue, "Their progress has been amazing and there are some really good pictures here as a result." Some are watercolours others are inspired by Kuniyoshi (several of the artists are Japanese) and others are still life and landscapes with prices from £20 - £200.

organised with temptingly low prices for originals and prints.

In December we are pleased to show the work of another local artist whose work was first shown in the Gallery's Summer Exhibition in Central Square. Christine Barrow says, "I have drawn all my life but it was only after the children were off my hands that I could take it seriously." Christine has attended 'lots of Institute art classes' and a Foundation course at the City Lit which lead to a BA in Fine Art at Middlesex University. The result is a body of work that is refreshingly different. The Garden Suburb Gallery is in Fellowship House on Willifield Green.

An established and popular painter of watercolours of local scenes and Suburb house portraits, Freda Bolton's work is the subject of our exhibition from October 31 and for the last half of November a sale is being



A selection of still lifes by Christine Burrow



for life & style

www.litchfields.com


litchfields

Suburb News is published by the Hampstead Garden Suburb Residents Association
Publisher and photographer: Richard Wakefield: richardwakefield@btinternet.com
Editor: Terry Brooks: publications@hgs.org.uk
What's On Editor David Littaur: Email to Dvdlttr@aol.com
Views expressed in Suburb News are not necessarily those of the publishers.
Deadline for the Winter issue is mid December for publication late January.
RA web site www.hgs.org.uk