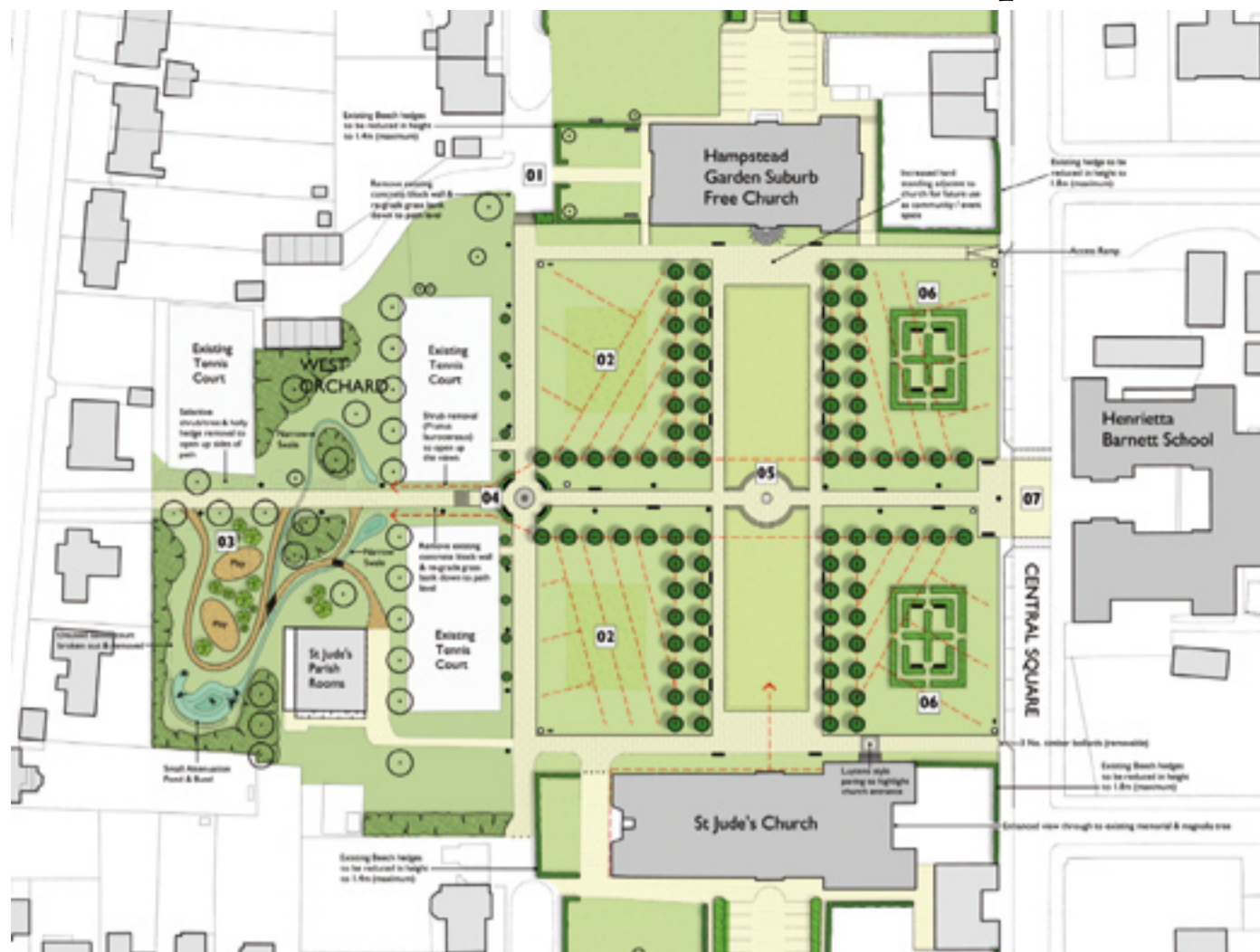


Plans for Central Square take shape



KEY

- York stone paving (Proposed new & re-laid)
- Resin bonded gravel (onto existing asphalt)
- Wood chip: timber edged (to conservation & planned informal play areas)
- Traffic calming zone (raised table)
- Seating: proposed Luytens-styled timber benches
- Seating: existing to be retained
- Litter bin and dog litter bin
- Lighting columns (appropriate style)
- Proposed timber bollards
- Trees: retained with localised crown lift & thinning
- Trees: Proposed (size, type, style to be confirmed)
- Hedges: to be removed
- Hedges: to be restored to various heights as shown (species uniformed to either Beech or Yew as shown)
- Low level shrubs & ground cover (existing to be enhanced & managed)
- Formal herbaceous perennials
- Playground/conservation area planting
- Amenity grass
- Piped land drainage from Central Square (proposed layout indicative)



The latest proposals for the renewal of the landscaping in Central Square have been produced following widespread consultation. The draft plan, illustrated above, has the backing of the Steering Group set up to supervise the project. This plan will form the basis of the next stage application to the Heritage Lottery Fund Parks for People Programme that will be submitted next year.

A contentious element of the plan, for some residents, is the proposed removal of the existing trees and their replacement with smaller trees to reflect the original design. This decision has been taken in order to submit a costed proposal to the Heritage Lottery Fund and will be revisited after further consultation at the next stage of the design development. We are not committed to the details of the plan and elements will inevitably change during the detailed design stage and after further site investigations.

The Steering Group welcomes comments on the plans from residents. Send your comments to mail@hgstrust.org or write to the Hampstead Garden Suburb Trust office at 862 Finchley Road, London NW11 6AB.

NOTES TO THE PLAN

(01) Steps to North West of Central Square:

Localised repair and replacement of York stone treads and balustrades. Adjacent hedges to the western entrance of the Free Church gardens to be reduced in height to 1.4m.

(02) Bulb Planting:

The two western grass quadrants within the Square to have areas of mass bulb planting which will give seasonal representation without compromising their use for school and community events.

(03) West Orchard:

Play and Nature Conservation Area. The main path leading to the Square and memorial is to have extensive shrub and hedge clearance to improve light levels. Selective tree thinning, crown lifting and shrub removals will reinstate views out of the Square to Harrow and the new Wembley Stadium. Central Square's drainage is to be dealt with on site in a series of swales and an attenuation pond in the West Orchard, enhancing the ecological value of the site. Within wildlife conservation areas, informal play will be introduced around a network of small wood chip paths. The play elements are to be subtle and based around land form and sculptural pieces, instead of standard play equipment, in keeping with the conservation nature of the Orchard.

(04) Henrietta Barnett Memorial:

The existing mixed specie hedges are to be removed and four Yew hedges with Luytens seating to be reinstated around the Memorial.

(05) Central Square, Main Avenue:

The main axis running through the Square from East to West is to be made broader with the existing York stone paving cleaned and re-laid. Improved lighting and seating line the avenue and along the two proposed North-South pathways linking the churches through the centre of the Square, which will create greater circulation within the Square. At the centre of the path network a hardstanding area will act

as a platform for events with a floor engraving recognising the site's heritage. The circular form will step down (providing informal seating at the edges) into two sunken lawns which represent the originally proposed (although never realised) ponds with mass Crocus planting for annual colour.

(06) Formal Planting Beds:

The two planting beds within the grass lawns of Central Square to the East are to be redesigned and planted with herbaceous perennials in line with the original planting style.

(07) Henrietta Barnett School Entrance:

The main avenue leading to the school is to be opened out into a new area of York stone paving with seating. The adjacent three car parking spaces will be removed to improve through views to the Henrietta Barnett School and a raised table will increase the pedestrian link to the school whilst providing traffic calming measures outside the school's main gates.

SITE WIDE PROPOSALS

Drainage: Central Square tree pits and grass lawns to be drained into the West Orchard swales and small attenuation pool. In times of high rain/flash floods the central sunken lawns to act as an emergency attenuation pond overflow catchment area.

Lighting: Lighting provisions in the form of up-lighters to illuminate Henrietta Barnett School, the Free Church and St Jude's Church. General lighting within the Square to be an improved and consistent column design.

Signage: Interpretation strategy for the site's heritage and general signage to provide for two sign boards per Church and the school, as well as smaller plaques providing historical information around the Square. Finger posts/additional signage to be incorporated to encourage links with the Square to Hampstead Heath and the surrounding areas. The exact location of signage is to be determined at a later stage.

New build plans for Henrietta Barnett School



New build on Central Square – but to go at last (main story, front cover)

**For Art Lovers in
Hampstead Garden Suburb**

BROWN HILL
insurance group

**Insuring homes in Hampstead Garden Suburb
for over 20 years**

2nd Floor | Kent House | 41 East Street | Bromley | Kent BR1 1QQ
T 020 8658 4334 F 020 8650 5065 E info@brownhillgroup.co.uk
www.brownhillgroup.co.uk