

SUBURB NEWS

THE HAMPSTEAD GARDEN SUBURB RESIDENTS ASSOCIATION NEWSPAPER ■ SPRING 05 - ISSUE 87

North Square site development? The Trust asks the Suburb

Mervyn Mandell, who chairs the Trust says, "We need the money to provide funds for doing a number of things on the Suburb for the benefit of residents that we can't otherwise afford." Andrew Botterill, who lives on North Square and has the support of 70 or so others who have written objecting to the plan, says, "A property developing Trust pulling down trees and filling in open spaces with unsuitable architecture creates a strong precedent that will lead to even more questioning of its own authority." Betty Scharf wants four to six modest flats not a mansion. Susan Osbourne points out that the site and its trees are ancient woodland and says it should be conserved by the Trust.

As always on the Suburb, this is not the first time. In 1985 the Trust commissioned a feasibility study from Alan Brown RIBA with the idea of moving the Trust

offices to North Square and incorporating a community centre in the building – funds for the new building being raised by the sale of 862 Finchley Road. The following year the Residents Association commissioned a report, prepared by Neville Silver MA FICE who was a member of RA Council. He went very thoroughly into the need for a centre, sought the views of all the bodies who might use it and surveyed the existing premises currently in use. Among his conclusions he said, "The officers of the Residents

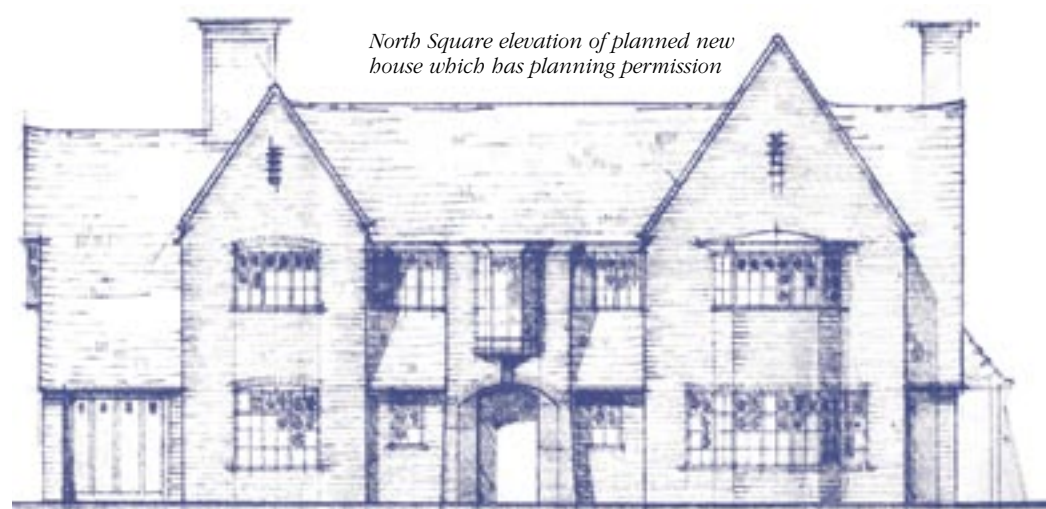
Association believe strongly that the lack of a general meeting place in the centre of the Suburb is a serious drawback..." and, "... "The building of a community centre in the middle of the Suburb which would house the Trust offices, the Archives, a community hall and refreshment facilities is a most excellent idea for creating a 'heart' for the Suburb."

In this issue the Trust is asking for residents' views, see page 9. Please fill in and return the coupon by 1 June.

RICHARD WAKEFIELD



Alan Brown's Trust office and community centre elevations, 1985



North Square elevation of planned new house which has planning permission

HGSRA website

Don't forget you can visit the Residents Association web site, and join the E-mail discussion list, at www.hgs.org.uk.

Time for subs

Suburb residents are reminded that subscriptions are now due for 2005.

The more households that belong to the Hampstead Garden Suburb Residents Association,

the stronger our voice will be in influencing the local authority and others whose policies and actions affect life on the Suburb.

Please return your card in the envelope delivered to you.

Passionate Suburbites

We at Glentree live and work in the Suburb and regard it as our home and it is this passion for the Suburb that inspires us with our work.

Moving home, be this selling or renting, needs very careful handling and, after almost 30 years, we are proud of our service which is professional, understanding and sensitive to fellow Suburb residents.

Even though we are locally based, we attract prospective residents not only locally, but through an international network, which in concert enables us to obtain fulsome prices which we hope justifies the full value to you of your home.

If you are thinking of renting or selling and would like to be appraised of the latest market news or just a simple chat, we would welcome your call.



SALES: 020 8458 7311 • LETTINGS: 020 8209 1144
698 FINCHLEY ROAD, LONDON NW11 7NE
WEBSITE www.glentree.co.uk



Alison Creedon was in the Suburb recently doing further research for her biography of Henrietta Barnett. "Suburban was a derogatory term and Henrietta fought the prejudices of critics like TWH Crosland who said, 'Suburbia is characterised by its vile taste and stingy purse. The garden suburb is a specially vulgar and undesirable movement.' She was a rebellious and feisty woman, her life is a fascinating story," said Alison, whose book will throw new light on the Suburb's founder.

Association members elect new chairman

The Residents Association AGM in March saw the election of David Lewis as chairman following the retirement of Georgina Malcolm who was stepping down after three years in the chair. Vice chairman Jean Barraclough, deputising for the retiring chairman who was unwell, said "Georgina has been a marvellous chairman and has had a very successful three years."

SGM

Earlier a Special General Meeting proposal to adopt a simplified constitution was defeated when it was pointed out that the re-writing, which specifically avoided any changes to the constitution,

unintentionally appeared to give Council members another vote at AGMs. The fact that RA membership is by household, and has been since 1911, and that each household therefore has only one vote, seemed to come as a surprise to many in the audience. Although it was not relevant to the proposal, some discussion on the possibility of a fundamental constitutional change to make individuals and not households the members took place.

As a result the constitution working group, who were thanked for their many hours spent on the project, will think again. This

time they will give consideration to more radical changes.

AGM

The chairman's update of her report for the year, read by Jean Barraclough, raised a number of points on which questions were taken. Gary Shaw told the meeting what the RA was doing about the Controlled Parking Zone proposed by Barnet which could extend the Temple Fortune zone to much of the Suburb. Cllr Harris wanted to reassure residents, "There are no preconceptions, we need to consult. Some people who are badly affected by all day parking

continued on p2

Ideas for Central Square

reinstating the original planting. Paths, lighting and seating would need to be upgraded.

The long-term maintenance of the Square would be carried out by Barnet to an agreed schedule of works, ensuring the appearance of the landscape is maintained.

We want to hear your views about the plans. Do you think

Central Square should be restored to its earlier appearance, shown below, or do you think it should be left as it is? Or maybe you have some other ideas you would like to put forward.

Please write to the Centenary Committee c/o The Garden Suburb Gallery, 16 Arcade House, Hampstead Way, NW11 7TL.

At the RA AGM Deborah Warland, Pia Duran, Sue Garden, Andrew Menneer and Valerie Cowan discuss the Centenary plans for Central Square

