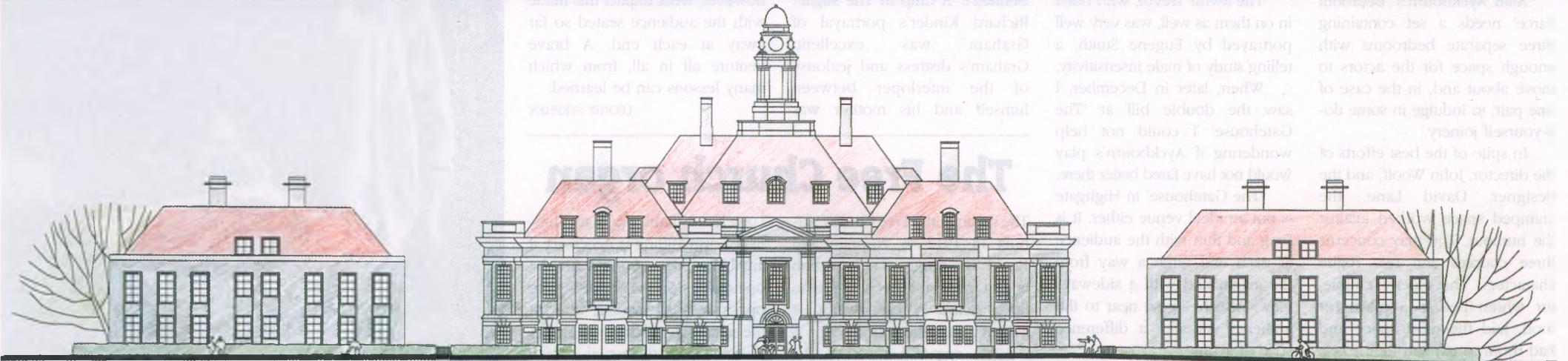


SUBURB NEWS

THE HAMPSTEAD GARDEN SUBURB RESIDENTS ASSOCIATION NEWSPAPER ■ WINTER 01/02 - ISSUE 74



New development for Central Square site?

Many have been the plans in the past for new building on what was the Institute site but now, following the settlement in 1999, belongs to Henrietta Barnett

School. Last month the school unveiled a set of three alternative plans devised by their architects van Heyningen and Haward. Each of them includes a first

phase building which is likely to be largely funded by the DfES to provide much needed science accommodation for the school. Each plan also includes a second

phase with space for the Institute to occupy a new building on the site and for the 'temporary huts' to go. The second phase is dependent on additional funds

being available and on the Institute wishing to take up the offer. Discussions with the Institute are only now starting to take place.

Suburb residents are invited to express their views on the various schemes which have been unveiled, details of which are on pages 6 and 7.

8m lamp-posts cut down to size

The last edition of *Suburb News* announced the threat of 8 metre high lamp-posts in Hampstead Way, Willifield Way and Addison Way. At the time the RA Roads and Traffic committee, as a result of negotiations with Barnet, had achieved 6 metre posts in most of the roads under discussion. Barnet were insisting on the Suburb making up the quite substantial cost difference between fewer 8 metre posts and, to fulfil the lighting standard required, more 6 metre lamp-posts. What has now been agreed is that more shorter posts will be installed, at no extra cost to the Suburb, in Hill Top, Brim Hill and Deansway which had been threatened with 8 metre columns and that English Heritage, the Trust and the RA will be asked to share a relatively small bill, about £2,500 each, for 6 metre posts in part of Hampstead Way, Willifield Way and Addison Way. This was agreed by the RA Council at its December meeting only after a heated discussion during which some members, who felt very strongly that it is the duty of the Borough to spend more

on protecting the environment of this unique conservation area without asking the residents for a subsidy, objected to the principle. "After all," said one, "it

was Barnet who made the Suburb a conservation area and it is Barnet that is insisting on brighter lighting."

RICHARD WAKEFIELD

School supper party

The Henrietta Barnett School Association is holding a supper party on Monday, 18 March 2002 in the main school hall. This event is held annually for anyone who attended the school.

In particular, it is a special reunion for all those who left 10, 20, 30, 40 and 50 years ago.

If you would like to attend, please telephone 202 8450 2036 for more details.

Suburb residents honoured

Dr Anne Saunders of Meadway Gate was awarded an MBE in the New year's honours list for services to the Topographical



Society, whose journal she has edited since 1975, and the Costume Society for whom she has edited a journal since 1965. Dr Saunders has written a new history of St Paul's Cathedral which we hope to feature in our next issue.

Another resident honoured is Barrie Ian McDonald of Oakwood Road whose MBE is for services to the Independent Television Commission where he was head librarian from 1968 to his retirement last year.



(Above) An angel at St Jude's at Christmas finds this acting business a bit nerve racking, see p 5

(Below) Even more residents enjoyed the RA fireworks party on New Year's Eve, see p 12



Home Sweet Home

We at Glentree, who live and work in the Suburb regard it as our home and we would like to believe that all our clients feel at home with our service.

Buying or selling a house needs very careful handling and over the past quarter of a century we have endeavoured to provide the kind of service which is professional, understanding and sensitive to the needs of our clients.

We are an unusual company in that although we are locally based, we procure purchasers from a worldwide international network which may enable us to achieve a fulsome price for you, which we hope fully justifies the value to you of your home.

We have produced a guide to selling and renting your home and also one which refers to the various aspects of the recent listing of 500 properties in the Suburb of architectural merit.

If you would like a copy or just an in principle discussion, we would welcome your call.



SALES: 020 8458 7311 • LETTINGS: 020 8209 1144
698 FINCHLEY ROAD, LONDON NW11 7NE
WEBSITE www.glentree.co.uk

Residents Association AGM

The 90th Annual General Meeting of the Association will take place on 19 March 2002 at 8pm in the Institute Hall, Central Square, NW11.

Motions for the agenda must be received by 5 February 2002

Nominations for the posts of officers and members of Council are invited. They should be submitted in writing, signed by proposers and seconders and have the consent of nominees. All must be members of the Association.

These must be received by 9 March 2002.

Please send notices of motions and nominations to:
HON SECRETARY, SIDDIK MEER 123 ERSKINE HILL NW11 6HU.