

Proms at St Jude's 13-22 JUNE

Friday 13 June

7.45pm Proms at St Jude's 2003 Opening Celebrity Jazz Night with **Stacey Kent and her Band** at St Jude's, Central Square, NW11. Refreshments. In aid of Toynbee Hall and the North London Hospice. Tickets £12 & £8. To book 8458 4166

Saturday 14 June

10.30am Proms Promenade A musical mystery tour, first of two delightful guided walks through the Suburb. Meet at HGS Gallery, Temple Fortune end of Hampstead Way. £5 includes complimentary programme and coffee at St Jude's. Advance booking advisable, limited numbers

12.45pm Proms at St Jude's 2003 Symphonic Wind Orchestra of N London with Channing Junior School at St Jude's, Central Square, NW11. Programme includes especially composed work for adults and children. Refreshments. Admission free

7.45pm Proms at St Jude's 2003 Gala Orchestral Night with the **Covent Garden Chamber Orchestra**, conductor **Robert Max, Zoë Solomon** piano, **Festival Chorus** at St Jude's, Central Square, NW11. Mozart Piano Concerto in D minor, K466, Beethoven Symphony No 9 *Choral*. Refreshments. In aid of Toynbee Hall and the North London Hospice. Tickets £12 & £8. To book 8458 4166

Sunday 15 June

7.45pm Proms at St Jude's 2003 Lieder Recital with **Christopher Maltman** tenor and **Andrew Smith** piano performing Schubert *Die Schöne Müllerin* at St Jude's, Central Square, NW11. Refreshments. In aid of Toynbee Hall and the North London Hospice. Tickets £12 & £8. To book 8458 4166

Tuesday 17 June

12.45pm Proms at St Jude's 2003 Virtuoso Students of **Erich Gruenberg** OBE play **Vivaldi** Concerto for 3 Violins and works by Tchaikovsky, Saint-Saëns and Wieniawski. St Jude's, Central Square, NW11. Refreshments. Admission free

7.45pm Proms at St Jude's 2003 Celebrity Piano Recital by **John Lill** piano in a programme of works by Beethoven, Chopin and Liszt, at St Jude's, Central Square, NW11. Refreshments. In aid of Toynbee Hall and the North London Hospice. Tickets £12 & £8. To book 8458 4166

Wednesday 18 June

12.45pm Proms at St Jude's 2003 Violin and Harp Recital by **Sara Bayley** violin & **Vinciane Degroote** harp. Saint-Saëns, Ibert, Debussy and Piazzolla. Refreshments. Admission free

7.45pm Proms at St Jude's 2003 Chamber Music Recital by the **Fujita Piano Trio**. Works by **Haydn, Takemitsu & Schubert**, at St Jude's, Central Square, NW11. Refreshments. In aid of Toynbee Hall and the North London Hospice. Tickets £12 & £8. To book 8458 4166

Thursday 19 June

12.45pm Proms at St Jude's 2003 Piano Recital by **Nicola Eimer** at St Jude's, Central Square, NW11. Bach, Schumann, Chopin and Debussy. Refreshments. Admission free

7.45pm Proms at St Jude's 2003 London Community Gospel Choir at St Jude's, Central Square, NW11. An evening of exhilarating and uplifting song. Refreshments. In aid of Toynbee Hall and the North London Hospice. Tickets £12 & £8. To book 8458 4166

Friday 20 June

12.45pm Proms at St Jude's 2003 Organ Recital by **Oliver Rundell** at St Jude's, Central Square, NW11. Bach, Rimsky-Korsakov, Elgar & popular film music. Refreshments. Admission free

6.15-7.15pm Jazz by Mojazz Pre-concert jazz by five exciting young musicians from Germany

7.45pm Proms at St Jude's 2003 Telepathy **William Carslake** directs a new group of five dancers and small orchestra at St Jude's, Central Square, NW11. **Grace Davidson** sings arias by Mozart and Handel. In aid of Toynbee Hall and the North London Hospice. Tickets £12 & £8. To book 8458 4166

Saturday 21 June

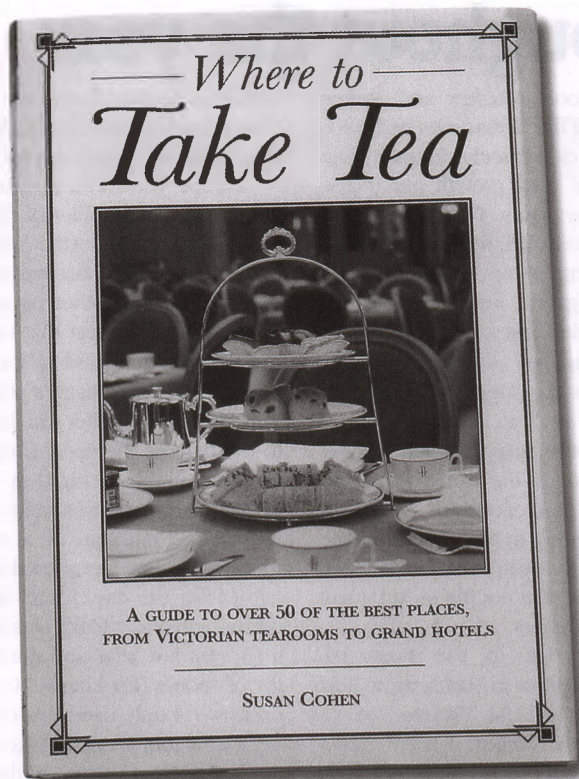
10.30am Proms Promenade The Artisans Quarter, second of two delightful guided walks through the Suburb. Meet at HGS Gallery, Temple Fortune end of Hampstead Way. £5 includes complimentary programme and coffee at St Jude's. Advance booking advisable, limited numbers

12.45pm Proms at St Jude's 2003 The Mimosas Quartet play string quartets by Haydn and Dvořák at St Jude's, Central Square, NW11. Refreshments. Admission free

7pm Proms at St Jude's 2003 Family Concert **Barnet Youth Orchestra**, conductor **David Temple**. **Henry Kelly** narrator **Sarah Williamson** clarinet. **Prokofiev** *Peter and the Wolf*; **Mozart** Clarinet Concerto; film music *007 Theme*, *Harry Potter*. St Jude's, Central Square, NW11. Refreshments. In aid of Toynbee Hall and the North London Hospice. Tickets £12 & £8. To book 8458 4166

Sunday 22 June

7.45pm Last Night of the Proms at St Jude's 2003, **South Bank Sinfonia**. **Simon Over**, conductor. **Oliver Rundell**, organ, **Sara Bayley** violin. **Berlioz** *Overture Le Corsaire*, **Poulenc** *Organ Concerto*; **Saint-Saëns** *Introduction & Rondo Capriccioso*; **Weber** *Invitation to the Dance* orch **Berlioz**; **Elgar** *Pomp & Circumstance* No. 1; **Wood** *Fantasia on British Sea Songs*, **Parry** *Jerusalem*. St Jude's, Central Square, NW11. Refreshments. In aid of Toynbee Hall and the North London Hospice. Tickets £12 & £8. To book 8458 4166



Where to take tea

If you have just finished tramping across the Heath you'll probably be looking forward to a freshly brewed cup of tea, accompanied perhaps by a delicious scone and butter. Or maybe you are off on a trip around England and want to find a special place to enjoy the nation's favourite drink.

Wherever you are, from Cornwall in the South to Scotland in the North, you would do well to have a copy of Susan Cohen's new book, 'Where to Take Tea', with you. Inside this beautifully illustrated book not only will you find recommendations for 50 of the best places to enjoy a traditional afternoon tea in Britain, but you will also be able to read about the fascinating history of tea, including the tea leaf, tea dances,

tea shops and the paraphernalia surrounding the ritual.

Susan, who moved to the Suburb last year with her husband Andrew – a returning 'Suburbite', is an historian and researcher with a special interest in late Victorian and Edwardian social history. She is a contributor to the New Dictionary of National Biography and has had articles published in academic and popular journals. Currently she is working on a biography of Eleanor Rathbone, MP. In her 'spare' time she works as an interior decorator, and is the author of Outdoor Paint Effects.

Where to Take Tea is published by New Holland in May 2003, price £9.99. The ISBN is 1843302152.

Guided walk and Open Gardens on the Suburb

Once again, the Horticultural Society has teamed up with the Hampstead & Highgate Festival to provide an event on the last day of their programme, Saturday 24 May. Participants will be taken on a guided walk through the Suburb, visiting four lovely

open gardens on the way, and finishing up in a fifth garden for refreshments. Meet at the Garden Suburb Gallery, Hampstead Way, at 10.30am. Tickets £6 on the day (part proceeds to the NW Support Group of the N London Hospice).

Make Sundays Special

What are you doing on Sunday afternoons? Could you spare one Sunday afternoon a month to bring a little warmth into someone's life and have some fun along the way yourself? Contact the Elderly is a small national charity that is asking local people to do just that.

Contact the Elderly is a voluntary service that offers friendship and outings to elderly people who live alone with little or no support from family and who can no longer get out on their own. Once a month, small groups of volunteer drivers use their own cars to collect elderly people and join them at a tea party at the home of a volunteer host. Each month the same group of drivers and elderly members enjoy an informal social afternoon at the home of a different host.

To ensure the survival of the scheme, the charity needs to recruit volunteer drivers who can use their own cars and spare approximately four hours one Sunday afternoon a month to collect elderly guests and join them at a tea party. The charity also needs to recruit volunteer

hosts to invite a group of eight older people and their four volunteer drivers into their home for tea just *once a year*. All that is needed is a warm welcome, a simple tea and a downstairs toilet. Peggy White is an 87 year old member of the group. She is not able to get out very much but this does not dampen her enthusiasm for life. I have no family in London and it has given me the opportunity to meet people and go out to different places. The Contact the Elderly teas are a nice way to spend a Sunday afternoon and it's great comfort to older people to have a regular monthly outing to look forward to.

For more information, please call Linda Roberts on 8464 7994 or Freephone 0800 716 543.



Piano lessons for all ages

Mrs Wolff
8455 4521

Rumpelstiltskin

The programme stated 'this baby ain't no pantomime'. No, it was something better; a fairy story told with good dialogue, nice jokes, well rounded characters and pleasant songs set to tuneful music. The author of all was Kjartan Poskitt. Smithy, a newshound for the Daily Star, is trying to get the story behind Miranda, who spins straw into gold. Brought before the king, suspected of fraud, Madame Inquisitor has her locked in a tower with bales of straw. Rumpelstiltskin to the rescue, but for an unnamed price. You know the rest.

The acting was of high quality, especially from Luke Courtier (Smithy), John Colman (Miranda's father), Liz Travers (Miranda) and

Sarah Overall as the fearsome Madame Inquisitor. However, outstanding was Jon Musker as Rumpelstiltskin, called in the programme 'The Manakin'. Musker is certainly no manakin, being rather tall and well-built, but he managed to make himself twisted and contorted and he had a really evil laugh. He was great fun. In fact, the whole production was great fun thanks to the Directors, Debbie and David Lane, the choreographer, Emma Solomons and the many delightful children. The band, Edd Turner, Gavin Evans, Julian Nicholl and Jeremy Thompson, were good to listen to and did not drown the players.

LEONIE STEPHEN

Gardening (continued from p10)

try (there is such a selection of colours that there must be something for everyone). You never know, if you enter them for the flower show, you could win the fabulous Gladiolus Cup (if only for a year). Start planting sweet peas and keep a lookout for blackspot on your roses, spraying them when necessary. Once June is with us, you shouldn't have to worry about frosts and so you can get stuck in with summer bedding and stuffing pots and containers to bursting point. Maybe we could get the best kept village award (oops! Sorry, that's the Archers. I got a little confused for a moment!).

I thought you might like an update on the progress of the allotment plot that I share with my chum Anne. The broad beans that I planted in November looked fab until they were squashed flat by the snow. Not

totally disheartened, I replanted more of the same in February. These are now up and running and I have also put in two rows of onion sets and wigwams of runner beans. I'm not sure what to do next so I just watch Harold – a real expert who has a plot near me. I will just copy. Anne, meanwhile, is growing weeds!

The Horticultural Society is having a members summer party on July 17. Cucumber sandwiches and lashings of ginger beer sounds good to me. There are still places on the trip to Bennington Lordship and Great Mumden on June 11 – another fun day out with me. I can't think of a better way to spend a wet Wednesday.

Until next time, don't forget to enjoy your garden and give it lots of TLC.

Good gardening.

DIANE BERGER

Best Garden on the Suburb competition

The Horticultural Society is looking for the prettiest or most interesting garden on the Suburb. Is it yours?

In this area full of lovely gardens, help us find the best one, whose owner will be awarded our own 'Suburb in Bloom' silver cup and some garden gift vouchers. We don't mind if your garden is large or small, at the front, back or side or all three, whether you do everything yourself or have some professional help. Judging will take place in July.

Competition entry forms from Marjorie Harris, 48 Erskine Hill, NW11 6HG, or you can email mah@marjorieharris.fsnet.co.uk (forms to be returned by 24 May).

Please note, the open gardens event scheduled for this date may not take place, due to owners not offering their gardens.

If you would be willing to open your garden to the public on 13 July, contact Diane Berger (8455 0455).

MARJORIE HARRIS

P R HARTLEY CHARTERED ACCOUNTANT & LICENSED AUDITOR Accounting & Taxation Services

Call 020 8731 9745 or 07850 634395

Email HartleyP@aol.co.uk

www.prhartley.co.uk

PERSONAL COMPUTER REPAIRS

NEED IT FIXED, UPGRADED OR REPLACED?

Inexpensive, quick service, friendly help at your home or office. All at very reasonable rates

HARDWARE · SOFTWARE UPGRADES
INTERNET/EMAIL PROBLEMS · PC'S BUILT TO ORDER

call Nicholas on 07968 561 355
or email to nroseborne@aol.com

From Britney to Beethoven – learning the piano can be fun...

... as well as providing a thorough technical and musical foundation. This will include: learning to read and write music, principles of rhythm and time, technique, ear-training, musicianship, sight reading and improvisation.

ALL STANDARDS · ALL MUSIC STYLES · PARENT/CHILD LESSONS



Piano Teacher ISM/EPTA (UK) registered

Tim Stein GBSM, ABSM, DIP.MUS
Tel: 020 8922 6113
Email: t.stein@talk21.com