



Rev. Tony Spring, David Morris, Douglas Weekes, Jenny Stonhold

Free Church for Fair Trade

In October a group from the Hampstead Garden suburb Free Church met assistant manager of Waitrose, Douglas Weekes, to present an enlarged mock receipt totalling £15,588.61, from receipts collected over six months to indicate Free Church members support for 'Fair Traded' goods. These are goods that have been produced by workers who are assured a fair wage. At the moment many workers in the less economically developed countries do not receive a decent day's wages for the work they do. Also their working conditions are often very dangerous.

This presentation, which is part of a wider Christian Aid campaign called 'Change the Rules', was to encourage Waitrose to stock more 'Fair Traded' goods and adopt a code of conduct to protect vulnerable workers.

The assistant manager, Douglas Weekes, assured the group that Waitrose did stock many 'Fair Traded' products like coffee and bananas and that this was in response to the demand from customers. He also indicated that Waitrose try to check that their suppliers are not exploiting their workers.

JENNY STONHOLD

Be a Friend of the Suburb Woods

The woodland management in Big Wood last winter attracted a lot of interest from residents, with volunteers doing their bit to clear undergrowth and tidy up. The Woods Management Group, which includes members of the RA Trees and Open Spaces Committee Colin Gregory, Michael Holton, Sally Lewis Georgina Malcolm and Douglas Thomas, plus Barnet's Catherine Cairns and is chaired by Suburb Councillor Jasmin Naghar, and the

British Trust for Conservation Volunteers are keen to form a 'Friends' group for Big Wood and Little Wood. To have your say and find out more, come along to Fellowship House, Willifield Way on Tuesday 19 January at 7.30pm and discuss ideas over a cup of tea.

For further information please contact, Ian Mather, BTCV on 0171 278 4294 or Catherine Cairns, Barnet Council on 0181 359 3052.

Gardening: time to relax

As we approach November and December there really isn't a great deal to do in the garden (unless of course you are Alan Titchmarsh) but if you are really desperate, jobs can always be found. Raking leaves, staking tall plants, a general tidying up and then a good mulch.

After that you can throw all the tools in the shed, pour yourself a decent glass of wine and contemplate gardening books and catalogues for ideas for next year.

Once all the herbaceous and summer bedding have gone, the garden can look so terribly bare. This is when evergreen shrubs fill the gap. They are sometimes quite unnoticed when the flowers are in full swing but this is the time of year that they really come into their own.

As most plants are container grown, it's not too late to pop out and treat yourself, or better still, get some one else to treat you!

I have always thought Pyracantha to be a bit dreary but over the last few years I have changed my mind. Trained round windows or just hugging a wall it can look quite stunning when in full berry but unnoticed at other times of the year. 'Dart's Red' is a good variety to look out for.

It's strange how plants can be quite festive. Skimmia Japonica is another favourite of mine but you do need a male and female for a successful pollination. Let's not forget the Ilex family (Holly). A winner in my eyes is Ilex Aquifolium 'Ferox Argentea'. The leaves are very dark green and deeply edged in cream with the prickles covering the entire surface of the leaves.

If you have cleared summer bedding from containers you can now make up a few with a

winter selection. It doesn't always have to be winter pansies, sweet as they are. Last year, I tried a combination of Leucothoe, Heathers and a group of small cyclamens, and the overall effect was very pleasing. These plants are available from most garden centres but I tend to go to Finchley Nurseries at Barton Hole Lane in Mill Hill.

I have continued to visit gardens open for charity and Wisley had an open evening in this scheme. There was something quite exciting about being at Wisley when it is normally closed.

It was very pleasant strolling around, sipping Pimms and listening to string quartets placed at enchanting locations. In one group of bedding I spotted a Phlox of the most amazing colour, a cross between deep pink and purple. Without trampling over most of the plants I managed to read the name plate, 'Border Gem' and it really was. I always feel quite pleased if I come away with something to want!

Later in August I went to Great Dixter. Rosemary Veary is always going on about Christo's (Christopher Lloyd) hot border so I thought I would check it out and there in the middle of his

hot border was an amazing Phlox; yes, it was Border Gem.

Isn't it strange how you can carry a colour for months, so in the spring I will order it from Wisley and I am now feeling quite smug and contented.

I read with interest in the summer issue the article on street trees in the Suburb. I am so pleased that a little more thought is going to be given to the planting and replacing.

The trees on my section of Willifield Way used to be flowering cherries but now it is a hotchpotch of silver birch etc. But I do think we have to be very careful when referring to the original plantings. Take for instance the gigantic North American Oaks at the lower end of Erskine Hill. These surely cannot be suitable as street trees but at least they are some distance from the houses. My heart goes out to the people on Hampstead Way who have those monster plane trees practically in their living rooms. Years ago when the Suburb was planted, these trees were fine for our heavy wet clay soil but as we are all aware, the climate has changed.

We have global warming, greenhouse effect and far less

rainfall but these monsters continue to drink copious amounts of water and as a result the clay soil dries out and problems move in. Most of these houses have got or have had subsidence, and yet I read that in the programme of replacing the trees another plane tree is due for Hampstead Way.

We all love the Suburb and are aware of how important our surroundings are, but surely the peace of mind and happiness of the community is equally important.

Every year these trees are pollarded and yet they still grow with a vengeance. Furthermore when autumn comes and the leaves as big as dinner plates litter the pavements, a trip to Waitrose becomes more an assault course than a pleasant stroll.

As Christmas approaches and catalogues and brochures pour through the letter boxes, hoping to tempt us with ideas, I saw something which I thought would make a great gift. It's a small book brought out by the R.H.S., called 'The Good Plant Guide' - 2,000 award-winning plants and is priced at £9.95.

Thank you, Santa!
Good Gardening.

DIANE BERGER



Suburb's Choral Group

The Alyth Choral Society, now in its sixteenth year, is the Suburb's own choral group. The Choir rehearses every Tuesday evening at the North Western Reform Synagogue, Alyth Gardens.

Over the years the Choral Society has performed at many Suburb events, the most recent being the celebration of the the Barnett Day at St Jude's in June.

Under the exciting direction of Vivienne Bellos, the choir works towards an interesting and varied programme of choral pieces ranging from Brahms to Bernstein.

Forthcoming concerts include a performance of Castelnuovo-Tedesco's Sacred Service at St John's, Smith Square in November as part of the 1998 Jewish Music Festival and performances of Mendelssohn's Elijah in March 1999.

This friendly group of enthusiastic choristers is always looking for new voices to join them. Auditions are held on a regular basis and the choir is open to all. For further details phone 455 1732.

JUDY SMITH

Institute Statement

A STATEMENT FROM THE COUNCIL OF THE HAMPSTEAD GARDEN SUBURB RESIDENTS ASSOCIATION CONCERNING THE INSTITUTE AND HENRIETTA BARNETT SCHOOL AGREEMENT:

The Council of the Residents Association welcomes the agreement which is being reached by the Institute and the School and which may enable both to remain on the Suburb site and the Institute to develop activities in premises elsewhere.

The RA strongly supports the continued presence of the Institute and the School on the Suburb so that both adult and secondary education remain available to residents in perpetuity. The wider education of society was a basic aim of the founder of the Suburb, Dame Henrietta Barnett. The Council therefore greatly regrets that under the proposal the Institute will be dependent on further negotiations to be assured of remaining on the main site at the end of only five years and that adult

education may disappear. The RA believes that a greatly extended tenure should be achieved by all parties to enable adult education provision to continue on the site, and that this should be confirmed in a public statement.

The RA is determined to be involved in discussions over the future provision of further education and leisure activities by the Institute on the Suburb for the benefit of Suburb residents, and any necessary new building for the School. As a result of the agreement, the RA hopes that there will be an early removal of the Portacabins, a solution to the parking problems, and an improvement in community access to the buildings. It would be wonderful if the Suburb, through the co-operation of the Institute, School, Hampstead Garden Trust, the RA and others, could celebrate its centenary in 2007 by launching a Community and Heritage Centre, meeting rooms, and even a theatre space, both replacing lost provision and realising our founder's vision.

Collins
Jane

ARCHITECT

JANE COLLINS
ARCHITECT
27 CALVERT ROAD
HIGH BARNET
HERTS EN5 4HH
TEL: 0181 440 5870
FAX: 0181 440 6078

GENUINE HOLISTIC THERAPY

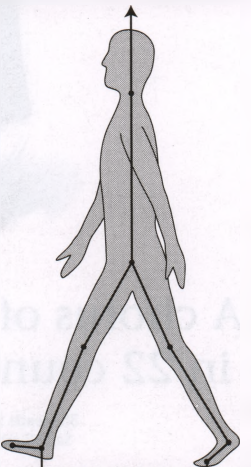
REFLEXOLOGY
BODY MASSAGE
AROMATHERAPY

Experience the benefits and healing given by a qualified therapist in the comfort of your own home.

For relaxation and help with stress, migraine, back-ache, insomnia and much more - contact
LESLIE ROBERT CARTER
IHHT ICHT FHT
0181 201 9402

PICTURE FRAMING
HGS Resident: evenings, weekends, daytime
458 2894

FREE YOURSELF FROM PAIN AND TENSION



WITH THE
ALEXANDER TECHNIQUE
Alex Maunder BSc, MSTAT
79 Brookland Rise,
Hampstead Garden Suburb
Tel: (0181) 455 1878

P R HARTLEY
CHARTERED ACCOUNTANT & LICENSED AUDITOR
Accounting and Taxation Services
Call
0181 455 7639 or 0171 377 9996
Fax
0171 375 0900

ENGLISH
Why settle for less?
TOP GRADE EXPERIENCED TEACHERS,
FRIENDLY, SMALL CLASSES
APPROVED TEACHER TRAINING CENTRE
TRINITY COLLEGE CERT
FREE CLASSES 1-3!!!
FOR OUR REGISTERED STUDENTS!!
WP AND COMPUTER TRAINING!
Golders Green College
and School of English
11 Golders Green Road,
London NW11 8DE
Tel: 0181 905 5467
Fax: 0181 455 6528
e mail: GGCOL@easynet.co.uk