

## Friends First

Priority booking for Friends of Proms at St Jude's – Ticket orders from Friends take priority over bookings from others (see Booking page).

If you would like to become a Friend – it can cost as little as £35 – email [friends@promsatstjudes.org.uk](mailto:friends@promsatstjudes.org.uk) phone 020 8455 1025 (NB this is NOT the Box Office) or visit the Proms at St Jude's website [www.promsatstjudes.org.uk](http://www.promsatstjudes.org.uk) and click on 'Friends'.

## Proms at St Jude's thanks its Sponsors & Donors

We thank the sponsors and donors who, along with the Friends and other supporters, make Proms at St Jude's possible.

### Silver Sponsors

The John S Cohen Foundation  
Hampstead & Highgate Express  
Hampstead Garden Suburb  
Residents Association  
Hampstead Garden Suburb Trust  
Pentland Group plc  
Waitrose

### Donors

Michael and Wendy Max  
The Gerald Ronson Foundation  
Daniel Watney  
Chartered Surveyors

### Gold Sponsors

The Bertha Foundation  
Berwin Leighton Paisner  
The Dorset Foundation  
Friends of Proms at St Jude's  
David and Pam Fulton  
The Jacqueline and Michael Gee  
Charitable Trust  
John Lewis Partnership  
Lloyds Banking Group

HAMPSTEAD - GARDEN - SUBURB - TRUST

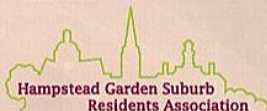


John Lewis Partnership

John Lewis | Waitrose



Ham&High



Supporting Toynbee Hall and North London Hospice

# Proms at St Jude's 2012 Festival

23rd June - 1st July

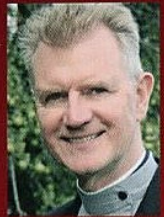
St Jude-on-the-Hill,  
Central Square, London NW11 7AH

[www.promsatstjudes.org.uk](http://www.promsatstjudes.org.uk)

SUPPORTING  
TOYBEE HALL AND  
NORTH LONDON HOSPICE

# Welcome to Proms at St Jude's

Book online at [www.promsatstjudes.org.uk](http://www.promsatstjudes.org.uk) or by post – see Booking Form. Telephone booking 020 8458 8798 open from Wednesday 6th June, 2-6pm every day except Sundays. Outside these hours, please leave a message.



We are delighted to be celebrating the 20th year of Proms at St Jude's in 2012. As well as a range of concerts to suit all tastes and a variety of walks around the Suburb and beyond, we are presenting for the first time

a weekend of literary events, giving you the chance to hear some well-known authors. Become a Friend and benefit from priority

booking and other extras. As usual, all funds raised go to Toynbee Hall and the North London Hospice, two excellent causes to which we were able to contribute £60,000 in 2011. I hope you will enjoy all that our special North West London 2012 festival has to offer!

*Alan Walker*

The Reverend Alan Walker

PRESIDENT, PROMS AT ST JUDE'S, VICAR OF ST JUDE-ON-THE-HILL

## Proms Heritage Walks

Tickets are £7.50 and must be booked – see Booking Form

**Monday 25th June 10.30am – Great Trees of the Suburb – Benefit and Burden** Nick Packard, the Trust's Estate Manager, looks at significant trees and explains important issues for their owners, and neighbours. Stout shoes recommended. Meet at Fellowship House, 136a Willifield Way NW11 6YD.

**Tuesday 26th June 2pm – Skilful, Economic and Artistic – the Design of Homes for the Middle Classes from 1907 to 1939** David Davidson, the Suburb's Architectural Adviser, looks at houses commissioned by private clients between Central Square and the Great Wall. Meet in St Jude's car park.

**Wednesday 27th June 11am – Poverty and Philanthropy in the East End** Samuel and Henrietta Barnett were not alone – the Rothschilds, Charles Dickens and many others fought to alleviate poverty in the same streets. Discover their legacy: libraries, soup kitchens,

art galleries, hospitals and adult universities. Meet at Aldgate East tube (Whitechapel Road exit). A tour of Toynbee Hall is included. Led by City of London Guide Hermione Pool or Blue Badge Guide Julia Male.

**Thursday 28th June 2pm – The Northern Heights – Connecting the Suburb to Highgate and Finchley** Jane Blackburn, Hampstead Garden Suburb Trust's Manager, on an initiative to promote the Suburb as part of a planned network of walks in North London. Meet in St Jude's car park.

**Friday 29th June 10am – Hampstead Heath: woods, gardens and ancient farmland** Simon Lee, the Heath Superintendent, tells the story of the northern part of the Heath and the famous people associated with it. The walk will visit the Pergola, Golders Hill Park and the Extension before ending at the Free Church in time for the lunchtime organ recital. Meet at the flag pole, next to Whitestone Pond NW3 7ES.

**Sunday 1st July 11am – Poverty and Philanthropy in the East End** A second chance to join this walk. See details above.

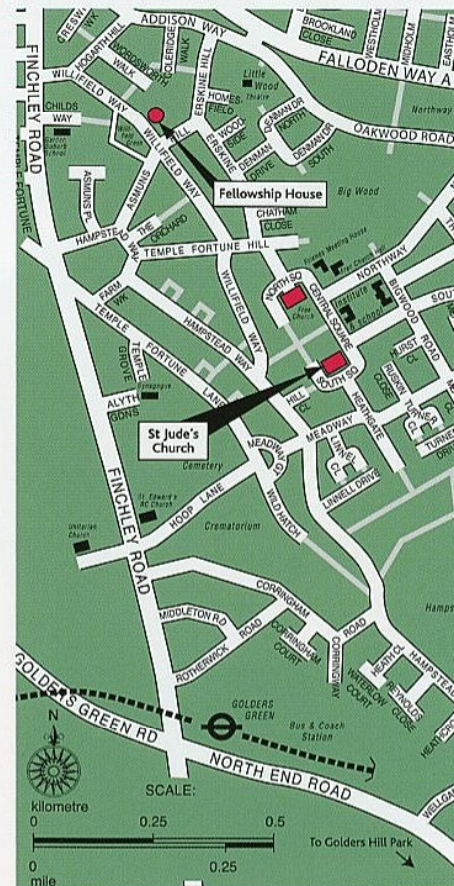
Supporting Toynbee Hall and North London Hospice

# In our 20th year!

St Jude-on-the-Hill, Central Square NW11 7AH  
General Enquiries (not Box Office), telephone 020 8455 8687

## How to get to St Jude's

Travel by bus or Northern Line to Golders Green Station. Then either walk to St Jude's - it takes fifteen minutes – or catch an H2 bus from its terminal by the station in Finchley Road. Get off the bus at Heathgate and you will see St Jude's just up the hill.



## Proms Literary Weekend Saturday 23rd & Sunday 24th June –

Among those appearing will be  
Diana Athill OBE (*Somewhere Towards the End*),  
Michael Parkinson (*Parky: My Autobiography*),  
Claudia Roden (*The Food of Spain*),  
Prof John Mullan (*What Matters in Jane Austen?*),  
A. D. Miller (*Snowdrops*) and Mihir Bose,  
former BBC Sports Editor (*The Spirit of the Game*). Tom Service (*Music as Alchemy*).  
For more information and for tickets:  
[www.promsatstjudes.org.uk](http://www.promsatstjudes.org.uk)

## Facilities for People with Disabilities

- Wheelchair access to church and toilet. Please let us know your requirements when booking.
- Hearing loop.
- Parking at St Jude's is very limited. It is strictly for the disabled and MUST be pre-booked.
- FIRST AID by St John Ambulance.

## Licensed Refreshment Marquee

Sandwiches, snacks, wine, beer, tea, coffee and soft drinks are available from noon and from 7pm.



A Member of the British Arts Festivals Association

### PATRONS:

Sir Rodric Braithwaite GCMG · Dr David Cohen CBE  
Erich Gruenberg OBE · Henry Kelly · Dame Emma Kirkby  
John Lill CBE · Lord Moser KCB FBA

Proms at St Jude's is the trading name of  
SJP Charity Trust Limited · Company No. 04482726  
Registered Office: 10 Middleton Road, London NW11 7NS  
Registered Charity No. 1094719

Design and artwork by 1st Impression · 020 8441 0672  
[www.1st-impression.org](http://www.1st-impression.org)

Printed by Falkland Press · 01707 277 550  
[www.falklandpress.com](http://www.falklandpress.com)

Book at [www.promsatstjudes.org.uk](http://www.promsatstjudes.org.uk)

# Evening Concerts

Book online at [www.promsatstjudes.org.uk](http://www.promsatstjudes.org.uk) or by post – see Booking Form. Telephone booking 020 8458 8798 open from Wednesday 6th June, 2-6pm every day except Sundays. Outside these hours, please leave a message.

7.45pm Saturday 23rd June

## A Night at the Opera

Supported by The Bertha Foundation

London International Orchestra with Paul Wynne Griffiths conductor, David Kempster baritone, Bonaventura Bottone tenor, Sarah Fox soprano and Leah-Marian Jones mezzo-soprano. Returning to Proms for the seventh time, the Orchestra is joined by international stars to present an evening of favourite operatic masterpieces, including highlights from the works of Verdi, Bizet, Puccini, Saint-Saëns, Donizetti and Weber.

7.45pm Sunday 24th June

## The Orion Orchestra

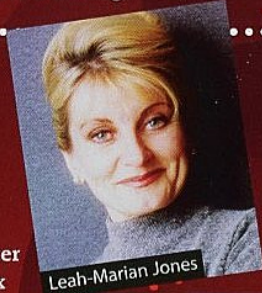
Supported by the Dorset Foundation and Berwin Leighton Paisner

Toby Purser conductor and Panos Karan piano. The Orion Orchestra was founded by Toby Purser in 2005 as a stepping-stone orchestra for the most talented musicians leaving music college. It has become one of London's most notable orchestral successes, receiving glowing reviews. **Liadov** Polonaise for orchestra in D Op 55; **Rachmaninov** Piano Concerto No 3 in D minor (as featured in the soundtrack of the 1996 film 'Shine'); **Dvořák** Symphony No 9 in E minor 'From the New World'.

'Here is a pianist with talent to spare'. International Piano



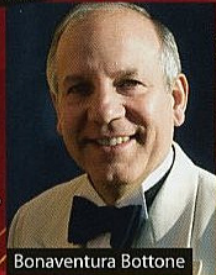
Orion Orchestra



Leah-Marian Jones



David Kempster



Bonaventura Bottone



Sarah Fox

Supporting Toynbee Hall and North London Hospice



Doors open 7pm. Concerts start 7.45pm

7.45pm Monday 25th June

## Piaf - The Songs

Supported by the John S Cohen Foundation



Eve Loiseau

Eve Loiseau comes from a French family of singers and long summer meals at home were often rounded off with chansons. Piaf is inimitable, but Eve's lustrous tone captures the essence of the Piaf performance in this tribute to the Little Sparrow. With Fiona Barrow violin and Edward Jay piano accordion.

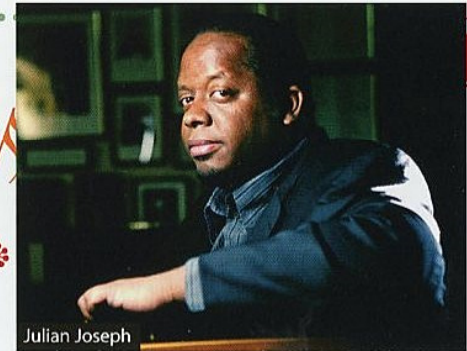
'Eve Loiseau...spectacularly talented and backed up by two wonderful artists...' David Levesley

7.45pm Tuesday 26th June

## All Star Jazz Night with The Julian Joseph Quintet

Julian Joseph piano, Christian Garrick violin, Steve Williamson tenor & soprano saxophones, Mark Hodgson acoustic bass and Mark Mondesir drums. 'One of Ellington's natural-born heirs... Charm, pure and simple, coupled with absolute assurance'.

Hailed as one of the finest pianists to emerge on this side of the Atlantic, Julian Joseph is a towering figure in contemporary jazz. This



Julian Joseph

new quintet promises to deliver all the elements that make his music so compelling – power, complexity, soulfulness, sophistication and breath-taking invention.

7.45pm Wednesday 27th June

## Nicola Benedetti and Friends

Supported by the Jaqueline and Michael Gee Charitable Trust



Nicola Benedetti

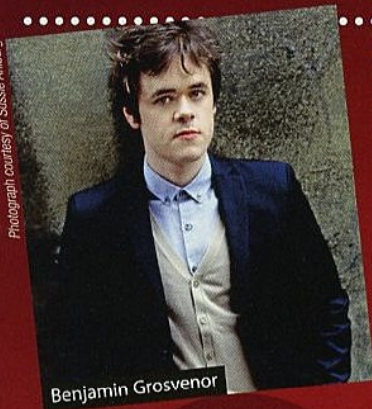
Nicola Benedetti violin, Alexei Grynyuk piano and Leonard Elschenbroich cello. Richard Strauss Sonata for violin and piano; Brahms Sonata No 2 in F major for cello and piano; Tchaikovsky Trio in A minor. Since her triumph in 2004 as BBC Young Musician of the Year, Nicola Benedetti has captivated audiences and critics around the world with her musicality and poise. For this recital she is joined by her regular trio partners, both of them, like her, prize-winning young musicians enjoying successful international careers.

Book at [www.promsatstjudes.org.uk](http://www.promsatstjudes.org.uk)

# Evening Concerts

Book online at [www.promsatstjudes.org.uk](http://www.promsatstjudes.org.uk) or by post – see Booking Form. Telephone booking 020 8458 8798 open from Wednesday 6th June, 2-6pm every day except Sundays. Outside these hours, please leave a message.

Photograph courtesy of Susie Ahlburg



Benjamin Grosvenor

7.45pm Thursday 28th June

## Benjamin Grosvenor Piano Recital

Supported by the late David Fulton and his wife Pam

**Benjamin Grosvenor** won the keyboard section of the BBC Young Musician of the Year in 2004, when aged eleven, and was soloist at the First Night of the BBC Proms in 2011. **Bach** Partita No 4 in D major; **Chopin** Sonata No 3 in B minor; **Scriabin** Sonata No 2 in G sharp minor Op 19; **Rachmaninov** Études tableaux Op 39 No 5, Lilacs, Polka de W.R.; **Ravel** Gaspard de la Nuit.

*Grosvenor... seems to have a sonic variety of liquid gold in his fingers. He's a natural romantic, sensing exactly how to shape an ecstatic arc and pace a rubato.* The Independent

7.45pm Friday 29th June

## The Academy of St Martin-in-the-Fields

Supported by Lloyds Banking Group

Directed by **Zsolt-Tihámér Visontay**. The ever popular **Academy of St Martin-in-the-Fields**, founded in 1959, is one of Britain's most distinguished chamber orchestras, acclaimed for its constant enthusiasm for fresh, brilliant interpretation of the world's best loved classical music. **Bach** Brandenburg Concertos No 3 and No 6; **Purcell** Chaconny; **Mozart** Symphonies No 17 and No 29. *...beyond superlatives!* The Glasgow Herald

Photograph courtesy of Bill Page



Academy of St Martin-in-the-Fields

Supporting Toynbee Hall and North London Hospice



Doors open 7pm. Concerts start 7.45pm

7.45pm Saturday 30th June

## Diamond Jubilee Choral Concert

Supported by John Lewis Partnership



Manvinder Rattan with The Cavendish Singers & Ensemble



Grace Davidson

**The Cavendish Singers and Ensemble of the John Lewis Partnership** with **Manvinder Rattan** conductor and **Grace Davidson** soprano. A concert to honour Her Majesty the Queen's Diamond Jubilee, with music from her

coronation and others. **Parry** 'I was Glad' and **Handel** 'Zadok the Priest', **Mozart** Exsultate, jubilate and music by **Purcell** and **Stanford**.

*'Grace represents the new generation of outstanding Baroque singers'.* David Sonin

7.45pm Sunday 1st July

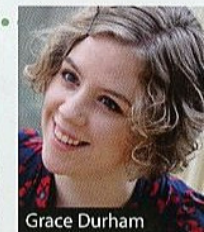
## Last Night of the Proms

Supported by Friends of Proms at St Jude's

**Covent Garden Chamber Orchestra**, **Robert Max** conductor, **Tamsin Waley-Cohen** violin, **Gemma Rosefield** cello and **Grace Durham** mezzo-soprano. **Dvořák** Symphony No 7; **Delius** Concerto for Violin and Cello; **Rossini** Aria 'Non più mesta' from *La Cenerentola*. One of London's leading non-professional orchestras appears under their regular guest conductor, cellist, chamber musician and local resident, Robert Max. The concert will conclude with traditional Last Night items.

Gemma Rosefield won the Pierre Fournier Prize at the Wigmore Hall in 2007 and now has an international career with recent tours of Japan and Mexico. Tamsin Waley-Cohen performs as a soloist with orchestras such as the Royal

Tamsin Waley-Cohen



Grace Durham



Gemma Rosefield

Philharmonic and London Chamber in venues which include the Barbican and Wigmore Halls. Grace Durham spent her third Cambridge year studying at the Conservatorio di Verona. She is now on the Artist Masters programme at the Guildhall.

Book at [www.promsatstjudes.org.uk](http://www.promsatstjudes.org.uk)

# Booking



Our secure online booking allows you to select exactly the seats you want from those available. You may still book by post and we will select the best available seats for you.

Booking periods open as follows:

- Benefactors & Gold Friends** – Monday 19th March  
**Silver Friends** – Monday 2nd April  
**Bronze Friends** – Monday 16th April  
**General public** – Monday 30th April

**Become a Friend** – see back page.

Postal applications will be handled on the same timetable as online booking. Telephone booking will be available from **Wednesday 6th June**.

All bookings will be subject to a fee of £2 per booking. Returns will be subject to a £5 administration charge per booking.

**Online booking** – Please go to [www.promsatstjudes.org.uk](http://www.promsatstjudes.org.uk) and click on **booking**, then follow the instructions. Tickets will be posted to you.

**Postal booking** – Please complete and post the booking form on the next page. There is no need to include a stamped addressed envelope. Tickets will be posted to you.

Paying by cheque? If your first choice of seats is not available but you will accept an alternative for the same event, please send an open cheque with an upper limit.

**Telephone Bookings** – Box Office 020 8458 8798 opens from **Wednesday 6th June**, 2-6pm every day except Sunday. Outside these hours, please leave a message.

**Seating** – Seating is classified as **Premium A** and **B** (front **A**, rear **B**) and **Unnumbered C**. Premium seating is upholstered, numbered and in the main body of the church. Unnumbered seats are wooden and are placed down the side aisles and at the rear. Some of these seats have restricted views and video screens are

placed to help overcome this, but early arrival is recommended. Cushions are available to hire for £1. Special spaces are reserved for wheelchair users – please indicate when booking if you need one of these.

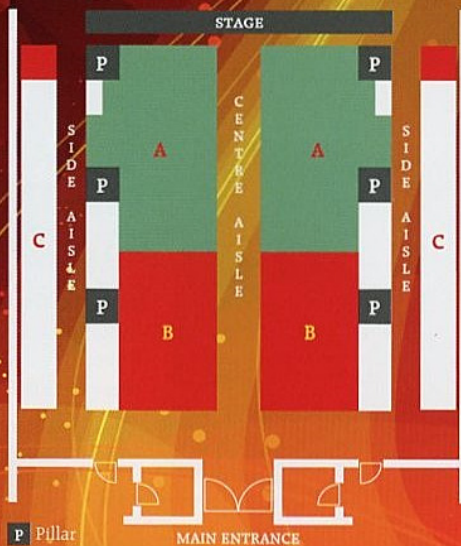
**Prices – Lunchtime concerts: FREE** (Doors open 12 noon, all seats are unreserved).

**Evening concerts:** See below and booking form (Doors open 7pm).

**Promenader tickets:** £3 at the door only (max 30 standing).

**Walks tickets:** £7.50

## Seating Plan



**Ticket Prices** – Prices vary according to concert – see booking form for details.

- A Premium A** £22 and £25 seats  
**B Premium B** £17 and £20 seats  
**C Unnumbered C** £10 and £11 seats

Supporting Toynbee Hall and North London Hospice

# Booking Form



For online booking, go to [www.promsatstjudes.org.uk](http://www.promsatstjudes.org.uk) and click on **booking**.

For postal booking, please complete this form and send to **Proms at St Jude's Box Office, 1 Temple Fortune Lane, London NW11 7UB**.

Please supply tickets for the following events: (Write the number of tickets required in the appropriate boxes. \*indicates unnumbered seats).

**Evening Concerts – Ticket Prices:** ■ A £22, B £17, C £10 ■ A £25, B £20, C £11

	A	B	C*	Total
June 23rd				£
June 24th				£
June 25th				£
June 26th				£
June 27th				£
June 28th				£
June 29th				£
June 30th				£
July 1st				£

**Guided Walks** – Ticket price: £7.50/person (Indicate number of tickets required by the date)

Proms Heritage Walk  June 25th  June 26th  June 27th  
 June 28th  June 29th  July 1st

**Literary Weekend** – See website or tick box to receive details by post.

## Totals

Concert tickets total	£
Guided Walks total	£
Plus booking fee	£2.00
<b>TOTAL</b>	<b>£</b>

Name: \_\_\_\_\_ Date: / /

Address: \_\_\_\_\_

Postcode: \_\_\_\_\_

Tel No: \_\_\_\_\_ Email: \_\_\_\_\_

I am a  Benefactor  Gold  Silver  Bronze Friend of Proms at St Jude's (tick if appropriate)

I would like to reserve a place for a wheelchair user (tick if required)

**Payment** (Please circle payment method)

MASTERCARD / VISA / CHEQUE (payable to **Proms at St Jude's**)

Card No: \_\_\_\_\_

Expiry Date: / / Valid From: / / Issue No: \_\_\_\_\_ Security code: \_\_\_\_\_

Cardholder Name: \_\_\_\_\_

Cardholder Signature: \_\_\_\_\_

Proms at St Jude's reserves the right to substitute artists and vary programmes if necessary

Please cut here

123456