

WELCOME TO

Proms at St Jude's

Box Office: 020 8458 1582

From 28th May, Monday - Saturday, 2pm - 6pm

Now open for postal bookings - see order form



This year we celebrate the centenary of the founding of Hampstead Garden Suburb by Dame Henrietta Barnett. After fourteen years, Proms at St Jude's is now a firm fixture in the life of our community and we are proud to be so closely associated with the anniversary celebrations.

Our programme offers a wide variety of music for all tastes and also provides you with an opportunity to support the work started by the Barnetts in the East End of London at Toynbee Hall and also that of the North London Hospice. We look forward to welcoming you to this magnificent church for our free lunchtime concerts and nine splendid evening events.

Alan Walker

The Reverend Alan Walker

PRESIDENT, PROMS AT ST JUDE'S, VICAR OF ST JUDE-ON-THE-HILL

Proms Heritage Walks

Walks £6 per person to include tea or coffee at St Jude's.

The following walks depart at 10.30am from the **Garden Suburb Gallery**, Temple Fortune end of Hampstead Way, and finish at St Jude's Church in time for a free lunchtime recital.

Saturday 16th June - Henrietta's Men led by Ruth Smith. *The influence of Sir Edwin Lutyens, Barry Parker and Raymond Unwin on the design of the Suburb.*

Wednesday 20th June - A Failed Utopia? led by David Davidson. *Was the experiment a success?*

Saturday 23rd June - Centenary Walk, the historical trail led by Chris Kellerman.

To mark the Centenary, specially tailored Heritage Walks, on a variety of topics, are available for private groups (min 20 people) by prior arrangement. These can either commence or end at St Jude's in time for an evening or lunchtime concert.

Supporting Toynbee Hall & North London Hospice

Made possible by our generous sponsors

We thank the Proms sponsors and donors who make the festival possible.

Gold Sponsors

- The Batty Foundation
- Berwin Leighton Paisner
- The John S Cohen Foundation
- The Dorset Foundation
- The Jacqueline and Michael Gee Charitable Trust
- Glentree
- Hampstead Garden Suburb Residents Association
- Horsey Lightly Fynn solicitors

Silver Sponsors

- Brownhill insurance group
- Godfrey & Barr
- Hampstead Garden Suburb Trust
- Hampstead & Highgate Express
- Lloyds TSB Group, Golders Green Branch
- Waitrose

Donors

- HenDi Group
- Moorgate Paper Company Ltd
- West End Saab
- The Worshipful Company of Carpenters



*berwin leighton paisner Horsey Lightly Fynn
solicitors



Waitrose

Ham&High

BROWNHILL
insurance group

HAMPSTEAD - GARDEN - SUBURB - TRUST

Link to performers' websites at www.promsatstjudes.org.uk

EVENING CONCERTS

Box Office: 020 8458 1582
 From 28th May, Monday - Saturday, 2pm - 6pm
 Now open for postal bookings - see order form

7.45pm Saturday 16th June Opening Night

Generously supported by Hampstead Garden Suburb Residents Association

Haydn Chamber Orchestra with **Owain Arwel Hughes** conductor and **Noriko Ogawa** piano. **Beethoven's** First Piano Concerto and **Mendelssohn's** Italian Symphony.



Owain Arwel Hughes



Noriko Ogawa

7.45pm Sunday 17th June Handel's Messiah

Generously supported by Hampstead Garden Suburb Trust and Waitrose

Grace Davidson soprano, **Hannah Pedley** mezzo-soprano, **Ben Johnson** tenor, **Will Carstake** bass, **Nicholas Chalmers** conductor and the **Proms Festival Orchestra and Chorus**.



Grace Davidson



Hannah Pedley



Ben Johnson



Will Carstake

Supporting Toynbee Hall & North London Hospice

Doors open 7pm, concerts start 7.45pm

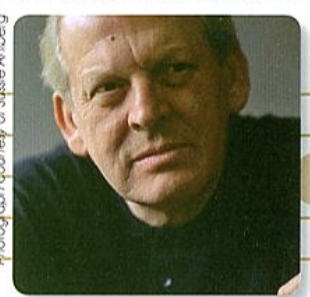
7.45pm Monday 18th June Song Recital

Generously supported by the Jacqueline and Michael Gee Charitable Trust



Photograph courtesy of Trevor Leighton

Dame Felicity Lott



Photograph courtesy of Sisse Almborg

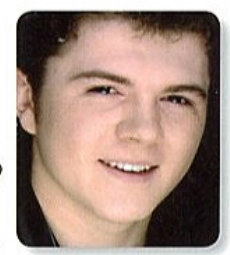
Sir Thomas Allen

Dame Felicity Lott soprano and **Sir Thomas Allen** baritone, with **Malcolm Martineau** piano. **Mendelssohn**, **Mozart**, **Richard Strauss**, **Coward**, **Berlin**, **Kern** and **Sondheim**.

7.45pm Tuesday 19th June Julian Bliss Trio

Generously supported by the Dorset Foundation

Julian Bliss clarinet, **Simon Lepper** piano and **Alexander Sitkovetsky** violin. Works by **Bartók**, **Brahms**, **Rossini** and **Milhaud**.

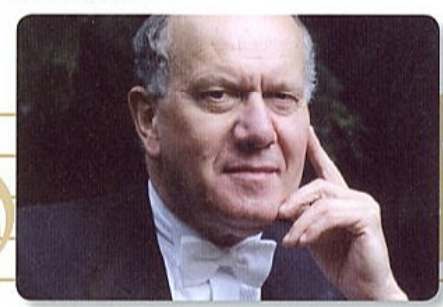


Julian Bliss

7.45pm Wednesday 20th June Piano Recital

Generously sponsored by Berwin Leighton Paisner

John Lill piano plays works by **Mozart**, **Schumann**, **Prokofiev**, **Chopin** and **Beethoven**.



John Lill

Link to performers' websites at www.promsatstjudes.org.uk

EVENING CONCERTS

Doors open 7pm, concerts start 7.45pm

Box Office: 020 8458 1582

From 28th May, Monday - Saturday, 2pm - 6pm
Now open for postal bookings - see order form

7.45pm Thursday 21st June

The Barbican Trio

Generously sponsored by Glentree

Robert Max cello, **Gabby Lester** violin and **James Kirby** piano. Works by **Haydn, Beethoven and Dvořák**.



Robert Max, James Kirby and Gabby Lester

7.45pm Friday 22nd June

Jazz Night

Generously sponsored by Horsey Lightly Fynn solicitors

Humphrey Lyttelton and his Band.



Humphrey Lyttelton and his Band

7.45pm Saturday 23rd June

Opera Evening

Generously sponsored by Brownhill insurance group



Mary Nelson



Victoria Simmonds



Rhys Meirion



David Kempster

London International Orchestra, Toby Purser conductor, **Mary Nelson** soprano, **Victoria Simmonds** mezzo, **Rhys Meirion** tenor and **David Kempster** baritone. Music from operas by **Mozart, Rossini, Verdi, Strauss and Bizet**.

7.45pm Sunday 24th June

Last Night of the Proms

Generously sponsored by Godfrey & Barr & Lloyds TSB Group, Golders Green



Vashli Hunter



Lynton Black

Southbank Sinfonia with **Simon Over** conductor, **Vashli Hunter** cello and **Lynton Black** bass. **Elgar's** Cello Concerto, **Stanford's** Sea Songs and traditional *Last Night* music.



FREE LUNCHTIME CONCERTS

12.45pm Saturday 16th June

New London Children's Choir

Ronald Corp conductor. British music for Children's Choir by **Britten, Vaughan Williams, Elizabeth Maconchy** (centenary of birth), **Howard Skempton** and many others, together with a specially commissioned work for the Proms by **Ronald Corp**.



Ronald Corp with the New London Children's Choir

12.45pm Tuesday 19th June

Recital by Students of the Purcell School

Khachaturian Clarinet Trio, **Beethoven** Piano Trio, a String Ensemble piece and some original works by students whose first study is composition.



Sir Peter Maxwell Davies with students of the Purcell School

All lunchtime concerts generously supported by Friends of Proms at St Jude's. Doors open 12 noon

12.45pm Wednesday 20th June

Schools Concert

Southbank Sinfonia members under **David Corkhill** leader present a concert for children and adults. The main piece will be **Copland's Appalachian Spring**.



Ren Yuan

12.45pm Thursday 21st June

Piano Recital

Ren Yuan piano. Works by **Bach, Beethoven, Chopin** and **Schubert**.

12.45pm Friday 22nd June

Organ Recital

Nicholas Chalmers Director of Music at St Jude's organ. **Bach, Elgar** (2007 is 150th anniversary of Elgar's birth) and a selection of transcriptions from the orchestral and operatic repertoire.

Note different venue: **Free Church, North Square NW11**



Nicholas Chalmers

12.45pm Saturday 23rd June

Recital

Lola Toursunova soprano and **Elen Lucia Pappalardo** piano. Arias and Romances by **Bellini, Donizetti, Mozart, Handel** and Piano Solos by **Chopin** and **Liszt**.



Lola Toursunova

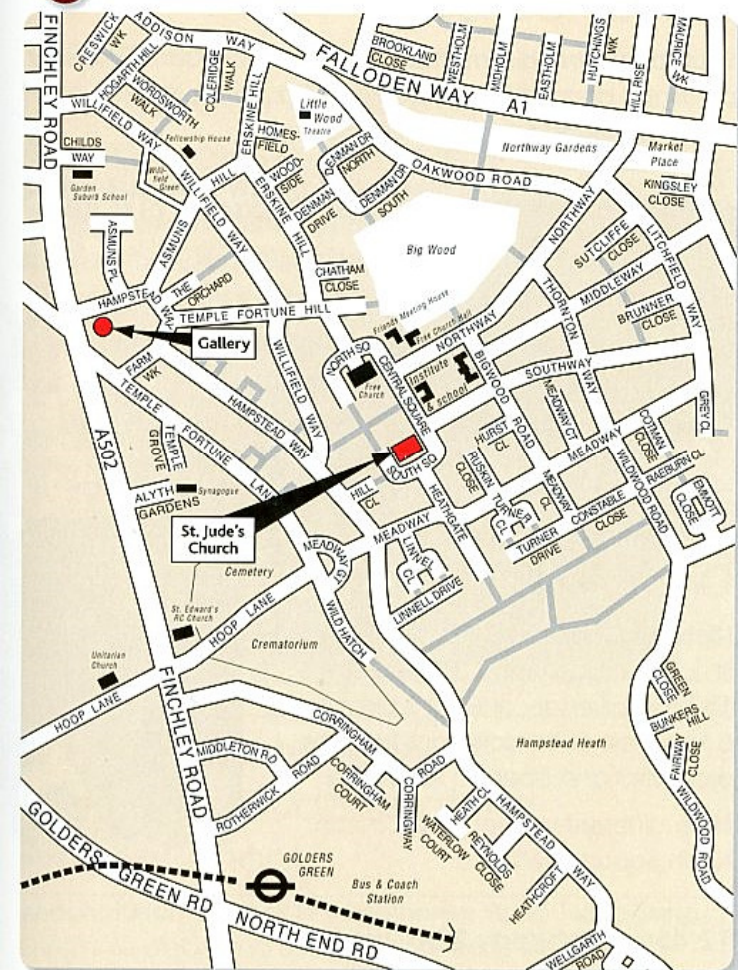


Elen Lucia Pappalardo

Supporting Toynbee Hall & North London Hospice

Link to performers' websites at www.promsatstjudes.org.uk

HOW TO GET THERE



Travel by bus or tube to Golders Green Station (Northern Line) where it is a 15-minute walk to St Jude's or take the H2 bus service from Golders Green station to Heathgate, approx 50 yards from St Jude's.

Proms at St Jude's is the trading name of SJP Charity Trust Limited
Company No. 04482726 • Registered Office: 10 Middleton Road, London NW11 7NS
Registered Charity No. 1094719

Design and artwork by 1st Impression, 020 8441 0672
Front cover illustration from a painting by W I Aston
Printed by Splash Printing Ltd, www.splashprinting.co.uk



A Member of the British Arts Festivals Association



HOW TO BOOK

FRIENDS FIRST!

Friends' postal bookings take priority until 14th May

To become a Friend, telephone 020 8455 1025
or email thomas@radice.clara.co.uk

More information at www.promsatstjudes.org.uk/support.html

NOTE: All bookings will be dealt with strictly in order of receipt. Please POST EARLY to avoid disappointment.

Non-Friend ticket allocation will start on 21st May.

Postal Bookings

Please complete and send off the attached booking form. Tickets will be available for collection at the door each night. If you wish your tickets to be sent to you, please enclose a stamped self-addressed envelope.

Credit card details should be completed on the postal booking form. A single handling fee of £2 is charged for payment by credit card. **Cheques should be made payable to Proms at St Jude's.** If your first choice is not available and you are willing to accept an alternative for the same event, please send an open cheque with an upper limit.

Telephone Bookings

Box Office opens from 28th May only.

020 8455 1582 (Monday - Saturday, 2pm - 6pm).

Seating

Seating is classified as **Premium A** and **B** and **Unnumbered C**. Premium seating is upholstered and numbered. Unnumbered seats are wooden and are placed down the side aisles and at the rear. Some of these seats have restricted views, so early arrival is recommended. Cushions are available for hire at £1.

Prices

Lunchtime concerts: FREE (Doors open 12 noon, unreserved seats).

Evening concerts: See booking form (Doors open 7pm).

Promenader tickets: £3 at the door (max 30 standing only).

Discounts: Book three or more concerts - 10% off.

Concessions: £2 off at the door on the night only.

Terms: We regret that we cannot give refunds or exchanges.

Supporting Toynbee Hall & North London Hospice

Link to performers' websites at www.promsatstjudes.org.uk