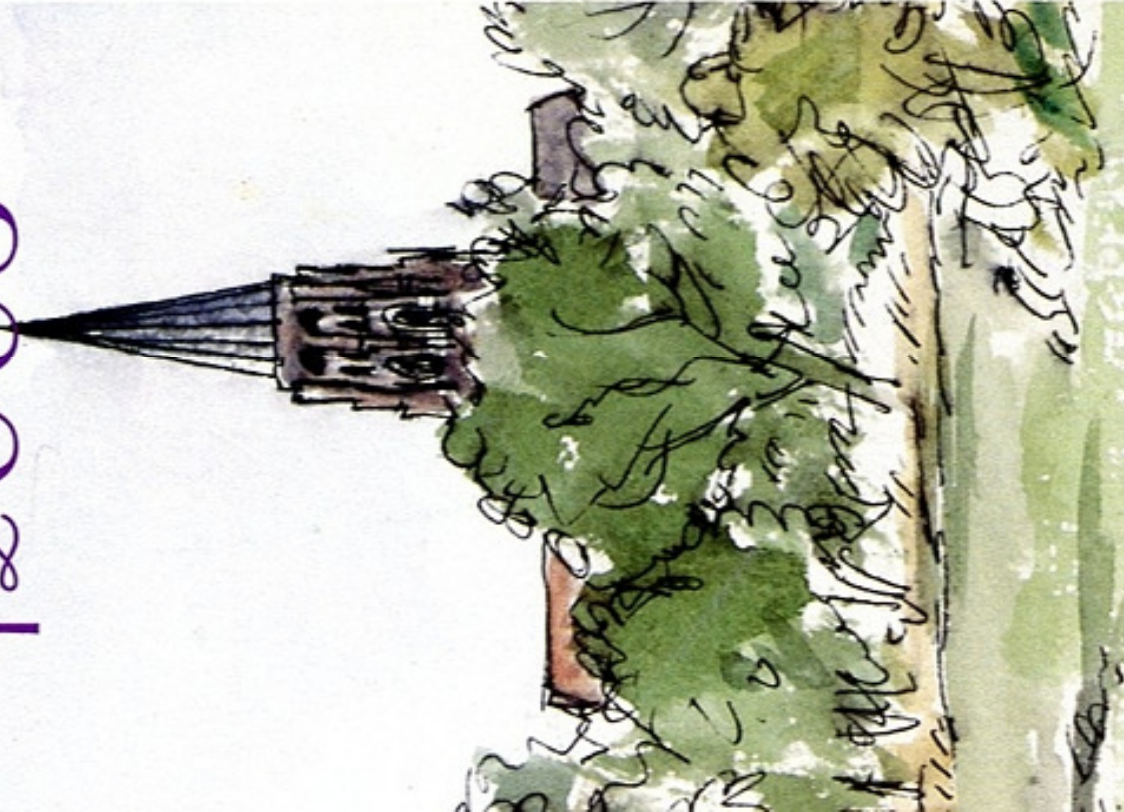


1 3 - 2 2 J U N E 2 0 0 3

Proms at St Jude's 2003



**ST JUDE-ON-THE-HILL
CENTRAL SQUARE, LONDON NW11**

PATRONS: DR DAVID COHEN CBE · ERICH GRUENBERG OBE
HENRY KELLY · HUMPHREY LYTTELTON

How to book

BOX OFFICE (opens 12 May)
Telephone Bookings & other enquiries

020 8458 4166

2 - 7 pm Monday - Saturday

Evening tickets £12 & £8. Concessions only available on the night.

Unreserved tickets, at £8, are also available from
The Garden Suburb Gallery, Hampstead Way, London NW11
and The Institute, Central Square, London NW11 7BN

or book online 24 hours a day at

www.stjudes.org.uk

Programme subject to change.



CAPITAL GARDENS

The Natural Place for Gardeners

*Capital Gardens is delighted to help
– The Proms at St Jude's –
raising funds for the North London Hospice
and Toynbee Hall*

LONDON'S LEADING GARDEN CENTRES

Alexandra Palace Garden Centre 020 8444 2555
with Roof Top Café - Alexandra Palace, London N22

Highgate Garden Centre 020 8340 1041
Townsend Yard, Highgate Village, London N6

Morden Hall Garden Centre 020 8646 3002
Morden Hall Road, Morden, Surrey SM4

Neal's Nurseries 020 8874 2037
Townsend Yard, Highgate Village, London N6

Temple Fortune Garden Centre 020 8455 5363
788A Finchley Road, London NW11

Woods of Berkhamsted 01442 863 159
The Old Iron Works, High St, Berkhamsted

For 24-hour secure online shopping and garden advice
visit our website

www.capitalgardens.co.uk

The Natural Place for Online Gardening

Evening Concerts

Evening concert ticket prices: £12 & £8



7.45PM FRIDAY 13 JUNE

OPENING CELEBRITY JAZZ NIGHT

Stacey Kent (Best Vocalist at 2002 BBC and the British Jazz Awards) and her Band. Presenter of Jazz Line-Up (BBC Radio 3) and Big Band Special (BBC Radio 2).

Sponsored by Chase & Partners

7.45PM SATURDAY 14 JUNE

GALA ORCHESTRAL NIGHT



Robert Max conducts the Covent Garden Chamber Orchestra with Zoë Solomon as soloist in Mozart's Piano Concerto in D minor K466, followed by a performance of Beethoven's masterpiece, Symphony No. 9 'The Choral' and featuring the Festival Chorus in the great Finale.

Sponsored by Hampstead Garden Suburb Residents Association

7.45PM SUNDAY 15 JUNE

CELEBRITY SONG RECITAL

Christopher Maltman, baritone, (winner of Lieder Prize at Cardiff Singer of the Year 1997) with Andrew Smith, piano. Programme includes Schubert's memorable song cycle, 'Die schöne Müllerin'.



Sponsored by Hampstead Garden Suburb Trust

7.45PM TUESDAY 17 JUNE

INTERNATIONAL CELEBRITY PIANIST

John Lill plays Beethoven's 'Moonlight' and 'Waldstein' Sonatas, Chopin's 'Polonaise Fantasy' in Ab and Liszt's Sonata in B minor.



Sponsored by the Jacqueline and Michael Gee Charitable Trust

7.45PM WEDNESDAY 18 JUNE

FUJITA PIANO TRIO



Megumi, piano, Honoka, cello, and Arisa, violin, the popular Japanese sisters, play music by Haydn, Takemitsu, Schubert and Adrian Vernon Fish's 'Akunnaaq', a World Première.

Sponsored by Miller Construction

7.45PM THURSDAY 19 JUNE

LONDON COMMUNITY GOSPEL CHOIR



UK's foremost gospel singers, with instrumental accompaniment. An evening of exhilarating and uplifting song.

Sponsored by White Young Green, Consultant Engineers

6.15 - 7.15PM FRIDAY 20 JUNE

JAZZ BY MOJAZZ

Pre-concert jazz performance by five exciting young musicians from Germany.

7.45PM FRIDAY 20 JUNE

TELEPATHY

Fusion of two art forms by new group of five dancers and small orchestra. William Carslake directs and Grace Davidson, soprano, sings arias by Mozart and Handel.



Sponsored by an anonymous friend of the Proms

7.00PM SATURDAY 21 JUNE

FAMILY CONCERT

David Temple conducts the Barnet Youth Orchestra with Classic FM's Henry Kelly, narrator, and Sarah Williamson, clarinet. Prokofiev 'Peter and the Wolf'; Mozart Clarinet Concerto, Berlioz 'Hungarian March', Mussorgsky 'Night on the Bare Mountain' and film music favourites '007', 'ET' and 'Harry Potter'.



Sponsored by Balfour Beatty Construction

7.45PM SUNDAY 22 JUNE

LAST NIGHT OF THE PROMS

South Bank Sinfonia with Simon Over, conductor and Oliver Rundell, organ. Sara Bayley, violin. Berlioz Overture 'Le Corsaire'; Poulenc Organ Concerto, Saint-Saëns 'Introduction & Rondo Capriccioso', Weber 'Invitation to the Dance' orch Berlioz, Elgar 'Pomp & Circumstance' No. 1, Wood 'Fantasia on British Sea Songs', Parry 'Jerusalem'.



Sponsored by Linklaters

How to book

BOX OFFICE (opens 12 May)
Telephone Bookings & other enquiries

020 8458 4166

2 - 7 pm Monday - Saturday
Evening tickets £12 & £8. Concessions only available on the night.

Unreserved tickets, at £8, are also available from
The Garden Suburb Gallery, Hampstead Way, London NW11
and The Institute, Central Square, London NW11 7BN

or book online 24 hours a day at
www.stjudes.org.uk

Programme subject to change.



CAPITAL GARDENS

The Natural Place for Gardeners

*Capital Gardens is delighted to help
- The Proms at St Jude's -
raising funds for the North London Hospice
and Toynebee Hall*

LONDON'S LEADING GARDEN CENTRES

Alexandra Palace Garden Centre with Roof Top Café - Alexandra Palace, London N22	020 8444 2555
Highgate Garden Centre Townsend Yard, Highgate Village, London N6	020 8340 1041
Morden Hall Garden Centre Morden Hall Road, Morden, Surrey SM4	020 8646 3002
Neal's Nurseries Townsend Yard, Highgate Village, London N6	020 8874 2037
Temple Fortune Garden Centre 788A Finchley Road, London NW11	020 8455 5363
Woods of Berkhamsted The Old Iron Works, High St, Berkhamsted	01442 863 159

For 24-hour secure online shopping and garden advice
visit our website

www.capitalgardens.co.uk

The Natural Place for Online Gardening

Lunchtime Concerts

Lunchtime concerts: Admission free

12.45PM SATURDAY 14 JUNE

SYMPHONIC WIND ORCHESTRA OF NORTH LONDON

with Channing Junior School. Including 'Gypsy Rhapsody',
a specially composed work by Nick Planas for adults
and children.

12.45PM TUESDAY 17 JUNE

VIRTUOSO STUDENTS OF ERICH GRUENBERG

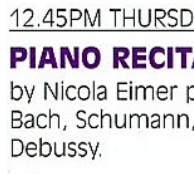
at the Royal Academy of Music play
Vivaldi's Concerto for 3 Violins and
works by Tchaikovsky, Saint-Saëns and
Wieniawski.



12.45PM WEDNESDAY 18 JUNE

VIOLIN AND HARP RECITAL

by Sara Bayley, violin, and Vinciane
Degroote, harp. Saint-Saëns, Ibert,
Debussy and Piazzolla.



12.45PM THURSDAY 19 JUNE

PIANO RECITAL

by Nicola Eimer playing works by
Bach, Schumann, Chopin and
Debussy.



12.45PM FRIDAY 20 JUNE

ORGAN RECITAL

by Oliver Rundell. Rimsky-Korsakov,
Bach, Elgar and popular film music.



12.45PM SATURDAY 21 JUNE

CHAMBER MUSIC RECITAL

by The Mimosa Quartet playing string quartets by Haydn
and Dvořák.

Proms Promenades

Guided walks: £5 including refreshment & programme

Participate in one of our two Proms Promenades –
delightful guided walks through architecturally renowned
Hampstead Garden Suburb.

Choose between 'A Musical Mystery Tour' on Saturday
14 June and 'The Artisans Quarter' on Saturday 21 June.
Or why not try them both?

Tours depart from the Garden Suburb Gallery, at the
Temple Fortune end of Hampstead Way, at 10.30am.
They end at St Jude's Church in time for refreshments
and the free lunchtime recital. Each walk costs just £5
and includes a complimentary Proms programme and
coffee on arrival at the church. Advance booking
advisable, limited numbers.

SPONSORS

We thank the sponsors of the Proms at St Jude's
who make the festival possible.

Balfour Beatty Construction · Capital Gardens Ltd
The Worshipful Company of Carpenters
Chase & Partners
John S Cohen Foundation · Direct Image
The Jaqueline & Michael Gee Charitable Trust
Gleeds Quantity Surveyors · Glentree Estates
Grant Thornton
HGS Residents Association · HGS Trust
Linklaters · Ruth and Jack Lunzer Trust
Miller Construction · Tesco
White Young Green, Consultant Engineers



A MEMBER OF
BRITISH ARTS FESTIVALS ASSOCIATION



SUPPORTED BY THE HAMPSTEAD GARDEN
SUBURB RESIDENTS ASSOCIATION

SJP CHARITY TRUST LTD · CO. NO. 4482726 · CHARITY NO. 1094719

Design and artwork by 1st Impression, 020 8441 0672.
Printed by Direct Image, www.direct-image.co.uk