

Proms

at St. Jude's

27th June to 3rd July 1993



St. Jude-on-the-Hill



NORTH · LONDON
H O S P I C E

Introduction

Welcome to the Proms at St. Jude's.

The event is the first of its kind in the church and We do hope you will be able to attend as many evenings as possible.

We are delighted that this fine building at the centre of the Suburb is being used for such an enjoyable occasion. Thank you for supporting this joint effort which has been organised by the North London Hospice supporters and members of St. Jude's.

We very much hope you enjoy the week's events. We can assure you that your contributions are appreciated and will be well used for the North London Hospice and the Organ Appeal.

Dr. Chris Donovan
Chairman of Northwest Support Group
North London Hospice

Jeremy Bunting
Vicar
St. Jude-on-the-Hill



Sunday, 27th June

6.00 p.m.

Choir of Highgate School

Admission by donation

The choir of Highgate School Chapel consists of sixteen choristers from Highgate Junior School together with some twenty altos, tenors and basses made up of boys and masters of Highgate School. The choir sings services during the term in the school chapel, but also regularly visits other churches and cathedrals to sing services or give concerts. Under its current Director, Michael Bowden, the choir undertook a tour of Holland, Belgium and France in 1992, and earlier this year made a recording with Cantoris. They will be visiting Wales for a week this summer.

Programme

Purcell

*Magnificat and Nunc Dimittis
in G Minor • Thou knowest
Lord, the secrets of our hearts*

Byrd

Ave Verum Corpus • Sacerdotes Domine

Telemann

Psalm 117

Organ Solo

Vaughan Williams

Five Mystical Songs:

Leandros Taliotis (Baritone)

Easter • I got me flowers

Love bade me welcome

The Call • Antiphon

Organ Solo

Noble

*Magnificat and Nunc Dimittis
in B Minor*

Bullock

Give us the wings of faith

Ireland

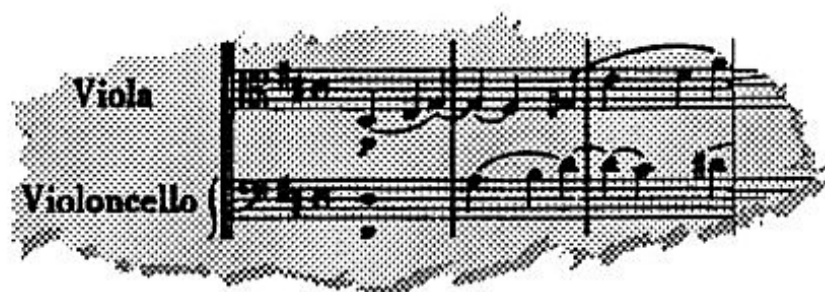
Greater love hath no man

Howells

*Like as the hart desireth the
waterbrooks*

Leighton

Let all the world in every corner sing



Monday, 28th June
8.00 p.m.
The London Medical Orchestra
Admission: £5

Michael Axtell was principal flute with the ENO for 18 years, and has also played with the Ballet Rambert and the Festival Ballet. His guest appearances include the Sydney Symphony Orchestra, the BBC Welsh, the Northern Symphonia and the San Sebastian Symphony Orchestra.

The London Medical Orchestra was formed in 1964 by the amalgamation of two independent medical orchestras: the London Medical Orchestra and the Three Hospitals Orchestra, conducted by Norman Del Mar, Colin Davis and Bernard Keefe. The orchestra is now thriving under the baton of Michael Axtell and the leadership of Pierrette Galeone.

Erich Gruenberg, acclaimed as one of Britain's most distinguished and musically wide-ranging violinists, appears regularly with many of Britain's leading orchestras and spends considerable time touring abroad, through Europe, the United States and Canada as well as South America.

Erich Gruenberg is a Professor at the Royal Academy of Music and gives masterclasses around the world. He is also regularly invited to sit on the jury of a number of major international competitions. He plays on a Stradivarius violin made in 1731.

Programme

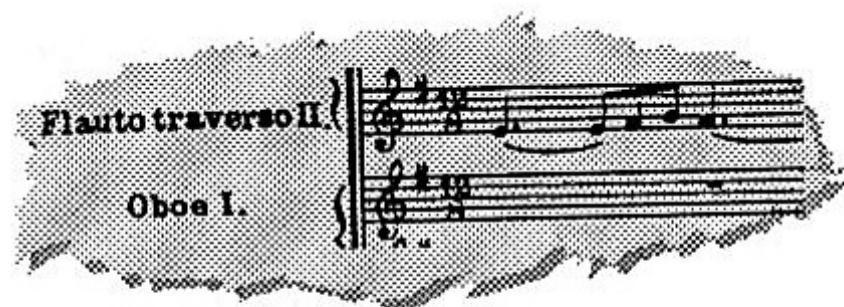
Soloist: Erich Gruenberg
Conductor: Michael Axtell

Nicholai
Overture,
The Merry Wives of Windsor

Dvorak
Czech Suite

Interval

Beethoven
Violin Concerto in D



Tuesday, 29th June
7.30 p.m.
Organ Recital by Andrew McCrea
Admission: £3

Andrew McCrea entered The Royal College of Music in 1983, studying organ and for the Bachelor of Music Degree at London University. He won several prizes there for organ playing and after graduating in 1986, he studied as a post-graduate organ student at the The Sweelinck Conservatorium, Amsterdam. Financial assistance from The Leverhulme Trust made these studies into early music performance practice possible. Since 1991 he has been organist and Director of Music at St. Jude's and works as a tutor for the Open University and Birkbeck College Extra-Mural Department.

Programme

William Walton
Crown Imperial
arr. Herbert Murrill

Herbert Howells
Psalm Prelude Set I no.2

Jan Pieterszoon Sweelinck
Variations on "Est-ce Mars"

Johann Sebastian Bach
Allein Gott in Der Höh' sei Ehr
BWV 662

Joseph Rheinberger
Fantasie and Finale
From Sonata no.10 in B Minor Op.146

Interval

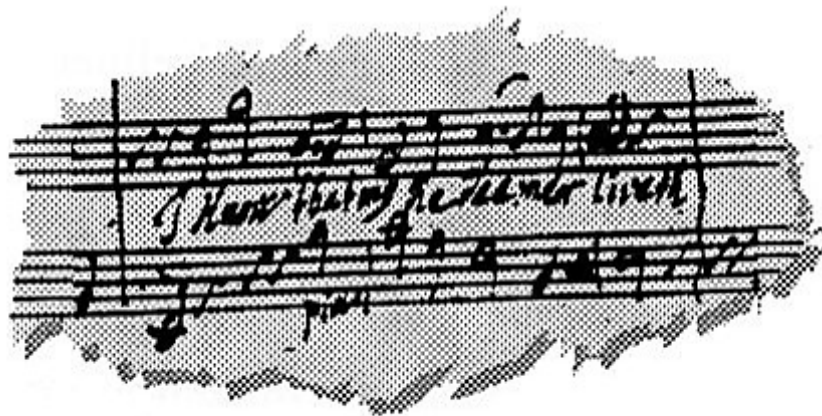
Johann Christoph Kellner
Praeludium in C Major

Wolfgang Amadeus Mozart
Andante in F Major k.616

Leon Boellmann
Chorale and Minuet
From Suite Gothique

Charles Marie Widor
Adagio
From Symphony no.6

Louis Vierne
Finale
From Symphony no.1



Wednesday, 30th June

8.00 p.m.

An Evening with

Anne O'Reilly and David Morse

Admission: £3

Anne Gillard O'Reilly has been singing professionally for thirty years and studied primarily with the British mezzo-soprano Mary Collier. Ms. O'Reilly has also studied voice with Adelina Ernster at Manhattan School of Music and has had vocal coaching with Paul Ulanowsky at Yale University. She especially enjoys singing sacred music and has been a soloist for numerous churches and choral groups

David Clyde Morse holds degrees in organ and choral conducting from the Hartt School of Music and has extensive training in piano through eleven years of private study in New York City. He has made nineteen appearances as piano soloist at the famed Carnegie Recital Hall in New York City.

Programme

Robert Schumann

Maria Stuart Lieder, Opus 135
Abschied von Frankreich • Nach der
Geburt ihres Sohnes • An die Königin
Elisabeth • Abschied von der
Welt • Gebet

Franz Schubert

Lieder
Fischerweise • Du bist die
Ruh' • Heidenröslein • Gretchen am
Spinnrade

Interval

Frederic Chopin

Ballade in A-flat Major, Opus 47

Johannes Brahms

Zwei Gesänge, Opus 91
Gestillte Sehnsucht • Geistliches
Wiegenlied - Helen (violoncello)

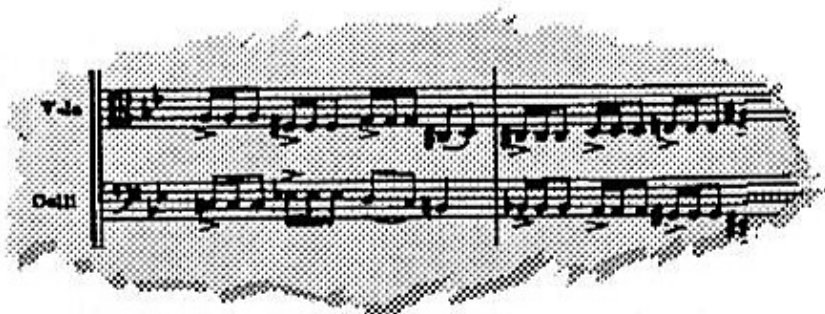
Maurice Durufle

Pie Jesu from Requiem

Wolfgang Amadeus Mozart

Parto inerte, e non pavento
From Betulia Liberata, Opus 118

Flower Arranging



Thursday, 1st July

7.30 p.m.

Flower arranging
presented by Susan Rinberg

Admission: £5

Susan Rinberg has always been interested in flowers, but took up floristry six years ago. She studied at Oaklands College in St. Albans for three years and then completed the City and Guilds Floristry Diplomas I, II and III. Susan has worked in several florist shops on a part-time basis and undertakes freelance work for weddings and other functions. She started teaching a recreational class three years ago and now runs a small flower arranging and floristry school in Totteridge.

Alison Lockhart-Siguruder NDSF. The Constance Spry Diploma in 1963 is one of a string of credits earned by the award winning florist, Alison Lockhart-Sigurdur, who later went on to represent Britain in the International Meeting of Young Florists in Grunberg in 1969. She won the National Diploma of the Society of Floristry in 1968. As well as making regular contributions to florists' magazines, she also teaches, and includes in her training courses floristry demonstrations and workshops.

The Presentation

An evening of Summer flowers

Susan Rinberg and Alison Lockhart-Sigurdur present a variety of flower arranging demonstrations, using material ranging from local garden flowers to exotic plants and flowers. The flowers will be raffled at the end of the evening.

Music for the evening is supplied by the Henrietta Barnett School String Quartet and strawberries and cream are available.

The North London Hospice

Over the last year we have seen an enormous amount of change at the North London Hospice.

We welcomed the first patients to our in-patient unit last October and now have twelve out of an eventual total of twenty beds available. It will not be too long before the whole unit is operating.

The Day Care Centre opened last month offering up to eight patients a day facilities which include pain control and alternative therapies as well as hairdressing and beauty treatments and the opportunity to meet others for a chat over lunch.

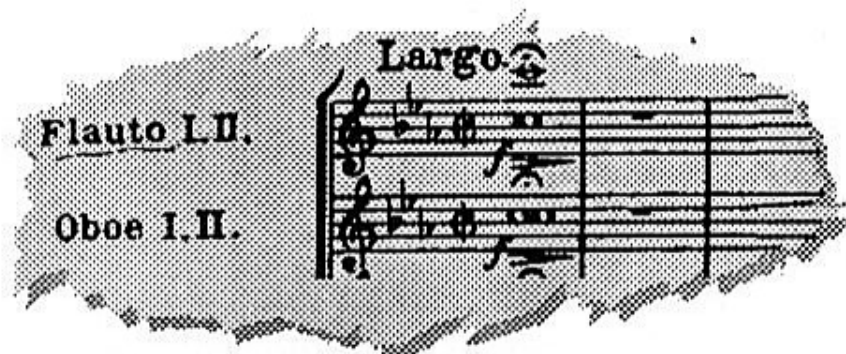
Now that all our services are up and running, the demands on our fundraising have never been greater and we always welcome new volunteers to help us in a wide variety of ways. Should you be interested in further information, please contact the hospice on 081-343 8841.

We are proud of our hospice and grateful for the support from all sections of our community which has brought it to fruition. Thank you for your continued interest.

Pauline Treen
Fundraising co-ordinator



Finchley Children's Music Group



Friday, 2nd July

7.30 p.m.

Finchley Children's Music Group

Conductor: Murray Stewart

President: Malcom Williamson AO CBE

Admission: £5

Widely recognised as being one of the finest children's choirs in the country, Finchley Children's Music Group has taken part in concert and operatic performances all over the country and abroad. It has commissioned works from a number of distinguished composers, including Gordon Crosse, Peter Maxwell Davies and Elizabeth Maconchy.

During the busy Christmas season in 1992 the Group had children taking part in "Hansel and Gretel" and "Carmen" with the English National Opera Company and the Senior Choir appeared in the English National Ballet Company production of "The Nutcracker".

Programme

Piano: Elizabeth Shepherd
Conductor: Murray Stewart

Two Shakespeare Songs
J Gardner
Under the Greenwood Tree
EJ Moeran
The lover and his lass

H Purcell
Evening Hymn

T Arne
Where the bee sucks

F Mendelssohn
*Two Choruses from a Midsummer
Night's Dream*

Brahms
*Piano Solo : Intermezzo no.2 in A
Op.118*

A Sallinen
*Songs from the Sea • Sea
Prayer • Shipshape • Sea
Danger • Ballad*

Lutoslawski
*Three Children's Songs
A Night in May • Windowpanes of
Ice • In Every Seashell*

Interval

Programme

B Britten

A Fancie • Corpus Christi Carol

An instrumental item
played by a member of the FCMG

A Messenger

O salutaris hostia

J Langlais

Two Motets

Ave Mundi Gloria • O salutaris hostia

F Schubert

*Piano Solo : Impromptu no.2 in E Minor
Op.90*

B Chapple

Songs from

Alice 'Twas Brillig

Twinkle, twinkle, little bat!

Humpty Dumpty

Speak Roughly to your little boy

Beautiful Soup

The Lobster Quadrille

'Twas Brillig



Saturday, 3rd July
8.00 p.m.
Jules Ruben & Friends
Admission: £5

Jules Ruben's first love is jazz. He started piano lessons at seven, and began playing jazz at fourteen after hearing Billy Mayerl. At twenty he was playing in dance-bands. His virtuosity as a veteran exponent of the jazz piano masters has filled the Purcell Room, the Mayfair theatre, the Pizza Express, the Pizza on the Park, the Barbican foyer, the Queen Elizabeth Hall, the Donmar Warehouse and numerous others.

His roots go back to Music Hall where he accompanied singers such as Celia Lipton, Elsie Carlisle, Jessie Mathews and Hildegard.

In 1937 he played at the famous Windmill Theatre, giving five shows a day. During World War II he was a member of the USO camp shows in England, when he appeared with Martha Ray, Kay Francis, Carole Landis and Stubby Kaye.

In the classic Robert Mitchum/Deborah Kerr film *The Sundowners*, Jules appeared and played. Jules has made many recordings on the Decca, Bruton and Embassy labels. Once described as having the fastest left hand in the country, he is a remarkable musician and one of the great veterans of his profession.

Programme

Jules Ruben & Friends

Playing the great standards
of the early years of American Jazz

Featuring
Len Skeets, Bobby Orr, Colin Smith,
Mac White & Joanne Miller

Wedding Dress Exhibition

The tradition of wearing white for weddings dates back to the early nineteenth century, but many middle-class and working-class women preferred not to go to the expense of a dress which would only be worn once and they would therefore be married in a smart day dress.

The first dress on display dates from about 1850. It consists of a skirt and jacket bodice and, like many garments of the period, probably also had a low necked short sleeved bodice for evening wear. In white silk, it is lined throughout with white silk, the bodice heavily boned. Under the full sleeves are detachable undersleeves of embroidered muslin. The waist measures 22".

The second dress in beige slub silk, trimmed with blue, dates from about 1868. We know that it was worn by the bride's youngest sister at a wedding in Norfolk.

The next exhibit dates from about 1889. In a lilac silk, it was perhaps worn by an older bride or a woman still in half mourning. Typical of the period is the smocked detail, the leg of mutton sleeve and the very high stiff collar.

The wedding outfit of the early 1900s is itself a "marriage". The bodice was part of a dress worn at

Wedding Dress Exhibition

a smart wedding at St James, Piccadilly, in 1901. The skirt and train are from a dress of perhaps two or three years later.

The dress of machine embroidered white muslin dates from 1920-21 but its satin collar seems to have been added a few years later. The soft line and natural waistline are typical of the early 1920s. The headdress dates from 1929 (see the accompanying photo) and the white satin shoes were in the local Oxfam shop a few years ago!

The brown dress of "devore" velvet and georgette is, like many dresses of the 20s, now in rather poor condition; but it is interesting to know that it was worn by a housekeeper at her wedding in 1928. The hat, reportedly from the best hat shop in Edinburgh, was worn by a seamstress for her marriage in Scotland in the same year.

The dress of mauve taffeta with its net hat is a bridesmaid's dress from the mid 1930s.

The dress of blue and bronze lame, with fox fur cuffs was worn in 1938, for the bride's second marriage. The crisp shoulder line and softly shaped bodice are typical of the period.

The St Judes Organ Appeal

The organ in St Judes is 104 years old and was originally installed in St Judes, Whitechapel. At the instigation of Henrietta Barnett it was moved to St Judes in Hampstead Garden Suburb and it remains in constant use for worship, concert and recordings. It comprises:

- ❑ 38 speaking stops and approximately 2400 pipes,
- ❑ a console, consisting of the keyboards, pedal board and stops
- ❑ a wind blowing chamber and four wind chests (and numerous windpipes)
- ❑ two enclosed boxes, incorporating the pipes for the "Swell" and "Choir" divisions of the organ, which can be opened and closed by the performer, thus allowing a crescendo and diminuendo.

The instrument was built by the same organ builder as the organ in the Royal Albert Hall, the renowned "Father Willis" who is still considered to be one of England's greatest organ builders. The St Judes organ was renovated in 1934, but is now in need of a major overhaul. The display at the West End of St Judes gives some idea of the faults which need to be corrected. During the course of the repair work the organ builders will take the opportunity to eliminate some unfortunate alterations that were made in the 1970s to ensure that the newly restored organ will be as close to Father Willis as resources permit.

To meet the demands of the changing nature of worship, concert and solo performance and to enable the organ to be used more widely in recordings, the restored organ will have a mobile console. Thus state of the art technology will be combined with the qualities of the Victorian organ builder to produce an instrument of which the Suburb can be truly proud.

Acknowledgements

Special thanks to

Casablanca Design Consultants

Central Hotel

Express Dairy Limited

Gordon Hudson Surveyors and Estate Agents

Loseley Dairy Products

Makro Self Service Wholesalers Limited

National Westminster Bank plc

Neopolitan Ice Company

Gordon Hudson

SURVEYORS & ESTATE AGENTS

We are delighted to support

The Proms week for

St Jude Church and the North London Hospice.

10 Market Place Hampstead Garden Suburb London NW11 6JG 081 455 4755