

# Proms

at St. Jude

24th June to 1st July 1995



St. Jude-on-the-Hill



NORTH • LONDON  
HOSPICE

Registered charity No.285300

# The North London Hospice

**T**he North London Hospice, based in Finchley, provides 20 in-patient beds, day care four days a week, home care and bereavement care for the family - working throughout the London Boroughs of Barnet, Enfield and Haringey.

We are multi-faith and aim to cater for people of all faiths and those of none. A registered charity, there is no charge to patients - the services are free to all.

The cost of providing all services is approximately £1.6 million per annum and almost all of this comes from local community and charitable giving.

We are proud of our Hospice and grateful to everyone who contributes to our funds. Thank you for your help and interest. For more information please ring the Hospice on 0181 343 8841.

# Introduction

Welcome to the third season of 'Proms at St Jude's'. We hope you enjoy the week's events organised by the local Friends of the North London Hospice and members of St Jude's. Your support is greatly appreciated, as is the generosity of our sponsors.

Every penny raised will go to the Hospice and to the Organ Appeal. Please visit the exhibition and enjoy refreshments in our marquee during the interval.

Dr. Chris Donovan  
Chairman, North West Support Group  
North London Hospice

Alan Walker  
Vicar  
St. Jude on-the-Hill

# Ebony Steel Band



Saturday 24th June  
7.30 pm

Initially formed in 1968, the Ebony Steel Band success story started in 1983 when they won the *Panorama Championship* title (a title they have now won an unprecedented four times). Since then the band has toured extensively both at home and abroad and performed on many special occasions. *The Midern Music Festival* in Cannes, the Royal Opera House at Covent Garden and the Commonwealth



Observance Day at Westminster Abbey are just some of the prestigious invitations *Ebony* have received. Recently they were invited to entertain

visitors to the Duke of Edinburgh's Award Garden Party at Buckingham Palace.

They are no strangers to Television and Radio, and in 1993 recorded an album in Trinidad and Grenada with Billy Ocean as their producer. Billy has been a keen supporter for many years and has performed with them at the Notting Hill Carnival.

With their arranger Annise Hadeed, they have explored not only traditional West Indian music but also classical and contemporary repertoire.

*Ebony* is not only a steel band but a way of life. In setting up the Ebony Steel Band Trust in 1988, they finally realised their ambitions to establish classes and workshops; facilities that will also allow people with disabilities and learning difficulties to reach their true creative potential.

## Programme

Tonight's programme will include traditional calypsos from Trinidad

Lara 4, Finnish It,  
and  
Heavy Roller

familiar songs such as  
Hey Jude, Imagine,  
and  
Ain't Nobody

and other numbers including  
Morning, Noon and Night  
and  
Never Walk Alone

This evening is partly supported by: The Hampstead Garden Suburb Residents' Association

# Crispian Steele-Perkins

(trumpet)

accompanied by

Andrew McCrea

(organ)



Sunday 25th June  
7.30 pm

Crispian Steele-Perkins is known world-wide through his concerts and participation in more than 700 recordings (including 12 solo albums). He is particularly in demand for playing Baroque repertoire (for example the Purcell and Handel he

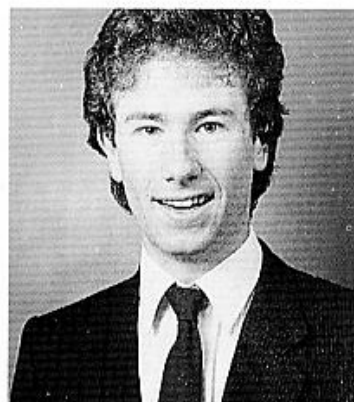
will play this evening) and for film soundtracks. *A Bridge Too Far*, *Jaws*, *James Bond*, *Batman*, and *A Fish Called Wanda* are just some of the famous films in which he has been involved.

His collection of antique trumpets provides him with a valuable opportunity to demonstrate in his recitals (some 50 each year) instruments of historical importance - sometimes both rare and bizarre! In 1980 he was



appointed Professor of Trumpet at The Guildhall School of Music and Drama, London. He gives many workshops and masterclasses both at home and abroad, and this year is busy with a series of Bach cantata recordings in addition to his concert engagements throughout the world.

Accompanying at the organ, Andrew McCrea has been the Director of Music at St. Jude's since 1991 and Music Director of the *Proms at St. Jude's* since its foundation in 1993. He studied at the Royal College of Music, London, and undertook postgraduate research into Renaissance and Baroque repertoire at the Sweelinck Conservatorium, Amsterdam. He teaches music for the Open University and the Royal College of Music Junior Department.



## Programme

Henry Purcell (1659-95)  
*Trumpet Tune and Air in D*  
*Trumpet Sonata*  
*Three Trumpet Ayres*

Carl Philipp Emanuel Bach (1714-88)  
*Sonata in F major* (organ solo)  
*Allegro - Largo - Allegretto*

John Stanley (1713-86)  
*Set of Voluntaries for Trumpet and Organ*  
 arr. Steele-Perkins

## INTERVAL

George Frideric Handel (1685-1759)  
*Suite in C major*  
 (Music from the Vauxhall Gardens)  
*Allegro* (from *Organ Concerto op. 4 no. 1*)  
 (organ solo)

Claude Gervaise (fl. 16th century)  
*Danserye*

Sir Arthur Sullivan (1842-1900)  
*Three Airs*  
 arr. Steele-Perkins

Christopher Steel (1939-1991)  
*Six Pieces op. 33*

This evening is jointly supported by The Ruth & Jack Lunzer Charitable Trust and Glentree Estates.



# Humphrey Lyttelton and his Band



Monday 26th June  
7.30 pm

In January 1996 Humphrey Lyttelton will be celebrating forty eight years as a bandleader, with a seven-piece band that he and many others - regard as the very best of his career. Its hallmark is versatility, reflected not only in a repertoire which ranges from traditional through to the moderns by way of Ellington, Basie, and other giants of the Swing Era, but also in the range of its artists - Helen Shapiro, New Orleans singer Lilian Boutte and the dance team Zoots and Spangles. It regularly accompanies them on disc and in special presentations.





The band is lucky over the years to have had many distinguished arrangers who have provided it with



a range of sound that extends from the intimacy of a small group to the punch and excitement of a band twice the size. Humph's own compositions now number well over an hundred and fifty!

## Your musicians for tonight's programme are

**Humphrey Lyttelton**

*trumpet*

**Kathy Stobart**

*soprano, tenor, & baritone saxes*

**Jimmy Hastings**

*alto & tenor saxes, clarinet and flute*

**Pete Strange**

*trombone*

(Pete also arranges for the band)

**Ted Beament**

*piano*

**Paul Bridge**

*bass*

**Adrian Macintosh**

*drums*

This evening is jointly supported by BC Business Centrum Ltd, Promat Fire Protection Ltd, Rockwool Ltd, and Regency Office Equipment.

Anne  
Gillard-O'Reilly  
(mezzo-soprano)

David  
Clyle-Morse  
(piano)



Tuesday 27th June  
12.30 pm

Anne Gillard-O'Reilly has been singing professionally for thirty years and studied primarily with the British mezzo-soprano Mary Collier. Ms.O'Reilly has also studied with Adelina Ernster at the Manhattan School of Music and Paul Ulanowsky at Yale University. She especially enjoys singing sacred music and has been a soloist for numerous churches and choral groups.

David Clyle-Morse studied piano in New York City for 11 years. He has appeared 20 times as a piano soloist at Carnegie Recital Hall including a full-length debut in 1982. For 17 years, he held the post of Organist and Director of Arts for South United Methodist Church in Manchester, New England. He is now Organist and Director of Music at Alamo Heights United Methodist Church, Texas.

# Programme

Henry Purcell (1659-95)

*I Attempt from Love's Sickness to Fly*

*Thy Hand, Belinda! & When I am Laid in Earth*  
*Dido and Aeneas*

*Strike the Viol*

*Nymphs and Shepherds, Come Away*

*Hark! Hark! the Echoing Air*

Sir Edward Elgar (1857-1934)

*Sea Pictures*

*Sea Slumber Song - In Haven - Where Corals Lie*

**Traditional**

*Blow the Wind Southerly*

*Suo Gân*

*My Boy Willie*

*Danny Boy*

# An Evening with Sir William Walton



Tuesday 27th June

7.30 pm

Lady Walton and Richard Baker celebrate the life and times of Sir William (1902-83) in two of his most popular pieces.

Susana Walton was born in Buenos Aires the daughter of the famous lecturer and lawyer Don Enrique Gil. Learning English before her native Spanish, it was not surprising that she was



later to be employed - and much to the consternation of her father - by the British Council in Buenos Aires. It was there in 1948 that she met Sir William. Within a month they were married and soon moved to the island of Ischia in the Bay of Naples. In her book *Behind the Façade*, Lady Walton offers a

witty and touching memoir of her life with the great British composer as a testament to their marriage. Their property in Ischia is now the home of the William Walton Foundation, created by Lady Walton to help young talented musicians.

**Richard Baker**, a native of north west London, graduated in History and Modern Languages from Peterhouse, Cambridge. He began broadcasting for the BBC in 1950, and continues to do so frequently



presenting programmes on Radios 2, 3 and 4. Television engagements include the First and Last Nights at the Proms (the Royal Albert Hall variety!) and the New Year's Day concert from Vienna. Twenty-eight years as a BBC TV newsreader and

numerous appearances on BBC 2's *Face the Music* have made him a familiar face to millions nationwide. In 1984 he was the Variety Club's Radio Personality of the Year.

**John Gibbons** (conductor) studied at Queens' College, Cambridge, the Royal Academy of Music, and the Royal College of Music where he conducted performances of *Die Zauberflöte* and *Eugene Onegin*. He has conducted for Welsh National Opera, the Opera Theatre Company, and Opera Northern Ireland. Recently he assisted John Eliot Gardiner in a new Philips recording of choral and orchestral works by Percy Grainger and in Kurtág's *Songs of Despair and Sorrow* in Amsterdam. He will be conducting Opera Europa in works by Donizetti and Leoncavallo at this year's Holland Park Theatre season in London.

Andrew McCrea (organ) see page 7

# Programme

*Lady Walton gives a brief talk about her life and times with Sir William.*

## **Crown Imperial**

(Coronation March 1937)

arr. Herbert Murrill

*Andrew McCrea (Organ)*

## **Façade**

*Speakers: Lady Walton and Richard Baker*

It is difficult to see why these delightfully genial, lively, and amusing settings of Edith Sitwell's poems for narrator and dance band should have caused such a stir at their first

public performance in 1923.

Perhaps the use of jazz saxophone and trumpet with more classical instruments may have been thought a trifle brash, but it is likely that Edith Sitwell, declaiming her poems through a megaphone, gleefully caused the most raised eyebrows. Listeners to *Face the Music* will immediately recognise 'Popular Song' as its signature tune for many years.

INTERVAL

Suite - film music from Henry V

arr. Edward Watson  
from Christopher Palmer's  
orchestral version

*Reader: Richard Baker*

Part 1

1. Prologue
2. Interlude at the Boar's Head Tavern
3. Falstaff's Rejection
4. "Touch her soft lips and part"

Part 2

1. Harfleur
2. The Night Watch
3. Agincourt

Part 3

1. Interlude at the French Court
2. Epilogue

Released in 1944 when British forces were once again on French soil, Laurence Olivier's film captured perfectly the current atmosphere. Echoes of Elizabethan music go hand in hand with melodies from the Auvergne. Laurence Olivier once remarked on BBC Radio "I have always said that if it was not for the music, *Henry V* would not have been the success it was."



# Brian Davis

(harp)



Wednesday 28th June  
12.30 pm

It was not until after university that Brian Davis started to play the harp. He studied for five years with the Russian harpist Maria Korchinska. Since then his playing has led him to art galleries, schools, and London concert halls alike. He has performed across Britain, and has toured in Ireland and France many times.

*We are particularly pleased to welcome Inglis Gundry to St. Jude's for this performance.*

## Programme

George Frideric Handel (1685-1759)  
*Passacaglia*

Nicolas Bochsa (1787-1856)  
*Variations on the Vesper Hymn*

Gabriel Pierné (1863-1937)  
*Impromptu-Caprice*

Marcelle Soulage  
*Choral*

Inglis Gundry (b.1905)  
*Concerto for Harp Solo*

William Alwyn (1905-85)  
*Crépuscule*

York Bowen (1884-1961)  
*Arabesque*

William Mathias (1934-1992)  
*Improvisation*

# The St. Jude's Organ Appeal

**T**he organ in St. Jude's is 106 years old and was originally installed in St. Jude's, Whitechapel. At the instigation of Henrietta Barnett it was moved to St. Jude's in Hampstead Garden Suburb and it remains in constant use for worship, concerts and recordings. It comprises:

- ❖ 38 speaking stops and approximately 2400 pipes,
- ❖ A console, consisting of the keyboards, pedal-board and stops
- ❖ a wind-blowing chamber and four wind-chests
- ❖ two enclosed boxes, incorporating the pipes for the "Swell" and "Choir" divisions of the organ, which can be opened and closed by the player, thus allowing a crescendo and diminuendo.

The instrument was built by the same organ-builder as the organ in the Royal Albert Hall, the renowned "Father" Willis who is still considered to be one of England's greatest organ-builders. The St. Jude's organ was re-built in 1934, but is now in need of a major overhaul. The display at the West end of St. Jude's gives some idea of the faults which need to be corrected. During the course of the repair work the organ-builders will take the opportunity to eliminate some unfortunate alterations that were made in the 1970's to ensure that tonally, the newly restored organ will be as close to "Father" Willis as resources permit.

To meet the demands of the changing nature of worship, concert and solo performance, and to enable the organ to be used more widely in recordings, the restored organ will have a mobile console. Thus state of the art technology will be combined with the qualities of the Victorian organ builder to produce an instrument of which the Suburb can be truly proud.

# The Garden Suburb Theatre

Murder in The Cathedral  
(T.S.Eliot)



Wednesday 28th June  
7.30 pm

The Garden Suburb Theatre is heir to a long tradition of drama in Hampstead Garden Suburb. In 1910 *The Masque of Fairthorpe* became the first of many pageants to be performed here - outdoor spectacles written by local residents, featuring music and dancing, and casts of literally hundreds!

then and a new merged group was formed in 1966 as the Hampstead Garden Suburb Dramatic Society. Their first production was Rattigan's *The Winslow Boy*.

The Little Oak Wood theatre continues to be used to this day (no longer with casts of hundreds!) and *Murder in the Cathedral* will be performed there over the next two weeks. The Garden Suburb Theatre produces four shows every year at the Institute in Central Square.

T.S.Eliot's *Murder in the Cathedral* was written for the Canterbury Festival in 1935 and is considered to be the first high point of his dramatic achievement. Like Greek drama, its theme and form are rooted in religion and ritual, purgation and renewal, and it was this return to the earliest sources of drama that brought poetry triumphantly back to the English stage.

# Kate Leeming

(organ)



Thursday 29th June  
12.30pm

**K**ate Leeming started playing the organ at the age of 13 and went on to study with Margaret Semple at the North London Collegiate School. She won the Organ Scholarship to The Queen's College, Oxford and has been performing regularly since. She is now writing her doctoral thesis on Byzantine Literature.

## Programme

Johann Sebastian Bach  
(1685-1750)  
*Prelude and Fugue in A minor BWV 543*

Pablo Bruna (1611-79)  
*Triento de 1 Tono  
de Mano Derecha*

Antonio Vivaldi (1678-1741)  
arr. J.S. Bach  
*Concerto in A minor BWV 593*  
Allegro - Adagio - Allegro

Samuel Scheidt (1587-1654)  
*Französisches Lied,  
Est-ce Mars?*

César Franck (1822-90)  
*Choral no.3*

# The Nonesuch Orchestra



Thursday 29th June  
7.30 pm

The Nonesuch Orchestra  
Erich Gruenberg OBE

Conductor: Robert Max  
Leader: Anne Park

**H**ampstead Garden Suburb resident Erich Gruenberg started his musical education in his native city of Vienna, continued his studies at the Jerusalem Conservatoire, and came to the United

Kingdom at the age of 22, winning the Carl Flesch International Violin Competition. This launched him on an international career.

Erich Gruenberg appears regularly with many of Britain's leading orchestras and spends a considerable time touring abroad. He is a Professor at the Royal Academy of Music and gives master-classes around the world.



The Nonesuch Orchestra was founded in 1962. It gives specially prepared concerts in schools to youngsters who otherwise might never be offered the experience of hearing live classical music. The orchestra also gives formal evening concerts, usual-

ly in aid of a charity, where outstanding young soloists are given an opportunity to perform in public and thus gain experience on the concert platform.

**Robert Max** studied at the Royal Academy of Music and the Juilliard school, New York. His extensive work with youth orchestras and young musicians recently included a concert at St. John's, Smith Square.

**Anne Park** studied at the Royal Academy of Music. She divides her time between teaching and playing professionally, both as an orchestral and as a chamber music player.

## Programme

**Felix Mendelssohn-Bartholdy (1809-47)**  
*String Symphony no.10*

**Henry Purcell (1659-95)**  
*Chacony in G minor*

**Sir Edward Elgar (1857-1934)**  
*Introduction and Allegro*

Solo Quartet played by Adam Chalabi,  
Benjamin Wragg (violins), William Coleman (viola),  
and Desmond Neysmith ('cello).  
They are all students at the Purcell School.

## INTERVAL

**Antonio Vivaldi (1678-1741)**  
*The Four Seasons*

*La Primavera op.8 no.1*  
(Allegro - Largo - Allegro)

*L'Estate op.8 no.2*  
(Allegro non molto - Adagio - Presto)

*L'Autunno op.8 no.3*  
(Allegro - Adagio molto - Allegro)

*L'Inverno op.8 no.4*  
(Allegro non molto - Largo - Allegro)

graduate of the Trinity College of Music, and  
Claire Payne is at present studying Dentistry.

# The Melford Trio

Tamsin Lewis (violin)  
Parnell Beesley ('cello)  
Claire Payne (harpsichord)



Friday 30th June  
12.30 pm

**T**amsin Lewis studied violin with Dona Lee Croft in London and with Eduardo Perpich at the Florence Conservatoire. Her musical interests range from the sixteenth century to modern violin repertoire. The Melford Trio formed after the three musicians met at the re-creations of Tudor life at Kentwell Hall in Long Melford. Parnell Beesley is a

## Programme

Arcangelo Corelli (1653-1713)  
*Sonata I (D major)*  
Grave/Allegro/Adagio - Allegro -  
Allegro - Adagio - Allegro

George Frideric Handel (1685-1750)  
*Sonata III (F major)*  
Adagio - Allegro - Largo - Allegro

Jean-Marie Leclair (1697-1764)  
*Sonata XII (G Minor)*  
Adagio - Allegro ma non troppo  
- Aria: Grazioso - Allegro

Arcangelo Corelli  
*Sonata XII (D minor)*  
"Follia con variazioni"



EXHIBITION

# The Suburb at War



In this the fiftieth anniversary year of the end of World War Two, St. Jude's houses an exhibition, by the Archives Trust, to show what life was like on the Suburb in the dark days of bombing and rationing for those living and fighting on the home front.

Alec Worster, Suburb sculptor, shows his thought-provoking sculpture *Homeless People*, and other works from his local studio.

**Maria Lidka**  
(violin)  
and  
**Richard Greenwood**  
(piano)



Friday 30th June  
7.30 pm

**M**aria Lidka was born in Berlin and studied in England with Prof. Max Rostal. She has played with most British orchestras and has given many first performances in England, including works by Lennox Berkeley, Britten, Tippett, and Schoenberg.

She has been a Professor at the Royal College of Music, taken part in the York and Edinburgh Festivals, and played at the Henry Wood Promenade Concerts.



Richard Greenwood was awarded a scholarship to the Royal College of Music and studied there with David Parkhouse and Kendall Taylor. He has performed in the U.K., and in Germany, Italy, Ireland and the U.S.A. He has broadcast on BBC Radio 3 and Classic FM. He teaches at the Royal College of Music Junior Department.

# Programme

**Wolfgang Amadeus Mozart (1756-91)**

*Violin Sonata in G major K. 379*

Adagio/Allegro -

Andante cantabile

**Johannes Brahms (1833-97)**

*Violin Sonata in D minor op. 108*

Allegro - Adagio -

Un poco presto é con sentimento

## INTERVAL

**Leos Janáček (1854-1928)**

*Sonata for Violin and Piano*

Con moto - Ballada - Allegretto -

Adagio/un poco piu mosso

**Antonin Dvořák (1841-1904)**

*Sonatina in G major op. 100*

Allegro risoluto - Larghetto -

Scherzo - Allegro

## LUNCHTIME EVENT

# Charlotte Eksteen (cello) Neil Roxburgh (piano)



Saturday 1st July  
12.30 pm

Charlotte Eksteen was born in Pretoria, South Africa and came to England with a scholarship to study at the Royal College of Music. She was awarded a number of prizes and scholarships, including an ARCO Scholarship from the offices of HRH The Prince of Wales. She was the principal cellist in the RCM Symphony Orchestra, is now a member of The Emiro Ensemble, and has performed and broadcast in both the U.K. and South Africa.

Neil Roxburgh came originally from Canada and was awarded a scholarship to study at the Royal College of Music. Whilst there he won many prizes including the Tagore Gold Medal in 1992.

## Programme

Arcangelo Corelli (1653-1713)  
*Grave*

Claude Debussy (1862-1918)  
*Sonata for Cello and Piano*  
Prologue - Sérénade et Finale

Dmitry Shostakovich (1906-75)  
*Sonata for Cello and Piano op. 40*  
Allegro non troppo - Allegro -  
Largo - Allegro

Joaquin Nin (1879-1949)  
*Seguida Española*  
I Vieja Castilla, II Murciana,  
III Catalana, IV Andaluza

# Bobby Lamb and the Trinity Big Band



Saturday 1st July

8.00 pm

Tonight's programme is chosen from the most spectacular swing arrangements from the 30's through the 50's including Glenn Miller's best known works.

Under the direction of Bobby Lamb the band has successfully appeared at many major music festivals. The line up for the band is 5 trumpets, 5 trombones, 5 saxes, 5 French horns, rhythm and tuba.

Tonight they are joined by singer Louise Kleboe.

Composer, conductor, and trombonist, Bobby Lamb is the Jazz Professor at Trinity College of



Music. As well as three years with the Woody Herman Band, appearances with the Stan Kenton Band and the Charlie Parker Band, Bobby has worked with Oscar Peterson, Louis Armstrong, Dizzy Gillespie, and vocalists Frank Sinatra and Ella Fitzgerald. He is the principal conductor of the European Community Youth Jazz Orchestra and guest conductor to the NDR Jazz Orchestra (Hamburg), and the BBC Radio Orchestra.

This evening's concert is partly supported by: New Hampstead Garden Suburb Trust.

# Acknowledgements

## Special thanks to:

**Bass Brewers**

GREAT BRANDS BEST SERVICE

Buyrite Fruit Stores

David Baker Architects

Brownhill Morris & West

Eastley Commercials

Express Dairies

L. & P. Foods

Howard Frank & Co

Frederick Goodwin

Griffin Stone Mosscrop & Co

P .R. Hartley

Hotblack Dixon

Klober Ltd

Cyril Leonard & Co

Marine Ices

Marks & Spencer

Markson Pianos

Mayes Transport Ltd

Owens Corning Building  
Products

Quest Insulations

Regency Office Equipment

Rockwool Ltd

Safeway

J Sainsbury

Mr Jeffrey Salmon

Sherrards Bakeries

Mr Tanner, Central Hotel

Taylor Walker

Tesco

Willan Building Services

Woodall Refrigeration