

Jungle Rock

We have all come to expect great things from Terry Rogers and his rock and roll musical, 'Jungle Rock', based on the books by Rudyard Kipling, did not disappoint.

It looked marvellous with a really lovely set designed by Jo Eggleton, assisted by David Rance and Jane Rogers, and costumes supervised by Frances Musker, Jeanne Solomons and Sheena Ross. The band, under their musical director Lyndon Radnedge, sent everyone swinging.

It is always good to see people really enjoying themselves and creating something at the same time. Wolves, monkeys and other animals, both young and old, put over the songs and dances with verve. It was also interesting to see actors whom we have seen over the years really let their hair down.

Tim Solomons, all gleaming white teeth and black sleek hair,

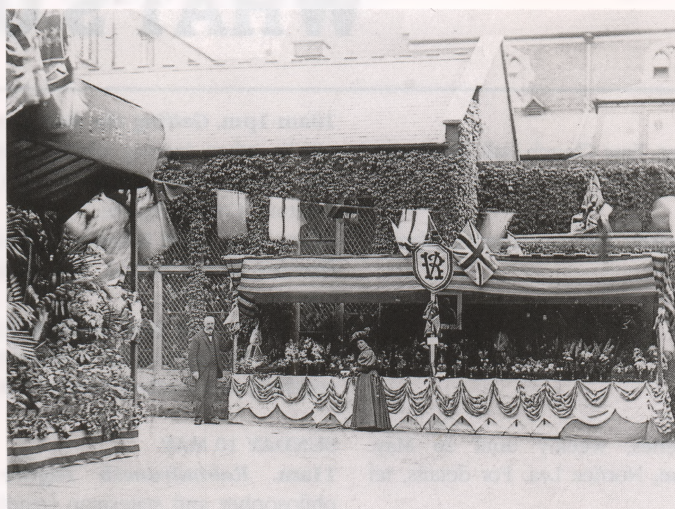
made a splendid Jackal and the number, 'My Guy', with his 'groupies' Sarah Connell, Emma Solomons and Louisa Day was especially entertaining. Jon Musker was a sleek Bagheera and Mike Ash a lovable Baloo. Lorraine Finnerty looked and sounded stunning as Kaa, the python. However, the evening belonged to the two Mowgli. Jodie Bloom, as the four-year-old, showed real stage presence and the transition to the ten-year-old was smoothly done. Julian Triandafyllou made a brave and resolute young hero.

Terry Rogers, assisted by Mary Musker, kept the show moving at a good pace and Emma Solomons arranged some amusing dance numbers for the numerous cast.

The evening ended with some of the cast jiving with the enthusiastic audience.

LEONIE STEPHEN

Toynbee Hall Month in the Suburb



Above: Toynbee Hall, 1898 with one of Dame Henrietta's flower shows. St Jude's Church is seen in the background.

Below: Toynbee Hall, 1998 from the same angle. Now there is an office block where St Jude's once stood. Photo Lorraine Blair.



June 1998 has been designated "Toynbee Hall Month" here. Why? And what does it mean?

The Suburb has a historic link with Toynbee Hall, founded in Whitechapel by Henrietta and Samuel Barnett some 20 years before Henrietta founded the Suburb itself. It was the first of several university settlements to be set up in order to bring new hope to deprived areas - a centre of enlightenment providing social services as well as educational and cultural opportunities where none existed. For more than a century it has continued to do so; and the need is, if anything, greater than ever.

We in the Suburb are the beneficiaries of Henrietta's utopian plans for a place of beauty and tranquillity in which to live - a mere half-hour from the still deprived East End. She had intended that many workers would be rehoused here, in the so-called "artisans' quarter" (now as solidly middle-class as later areas of the Suburb), but that ideal was not to be.

Today, in and around Whitechapel (London's poorest area) social problems are acute: literacy is lower than anywhere in the UK, crime and drugs proliferate, the pollution is appalling and unemployment among the highest in Greater London. Few professionals are dedicated enough to live and work there on behalf of the local families: those who do, deserve every help that we in the comfortable Suburb can give them.

And that answers the question why we are having a Toynbee Hall Month: to raise both awareness of and funds for Toynbee's work.

It may not be fully appreciated how much influence Toynbee Hall has had on the life of the whole nation: it was there that Beveridge worked and formulated his ideas for the welfare state, and Atlee also: and there too were nurtured such institutions as legal aid, the Citizens Advice Bureaux, youth hostels, the Child Poverty Action Group, the

Workers Educational Association and important legislation against anti-Semitism, promoting educational reforms etc. It needs every help if it is to maintain an influential role in the national scene.

June was chosen for our Toynbee Hall Month partly because there is now an official 'Samuel and Henrietta Barnett Day' on the 17th, when the (formerly Ugandan) Bishop of Stepney is coming here. Later, the Henrietta Barnett Lecture (once an annual event) is being revived, and Martin Bell MP will be the speaker. A variety of other fund-raising events in aid of Toynbee Hall will be taking place - from a major concert to a sponsored walk, from games

tournaments to sales of donated treasures, exhibitions to escorted tours (by coach) to the East End... read all about these in the June "What's On" which will be delivered to every household in late May. Offers to run more events are welcome (please telephone Elizabeth Gundry any morning on 731 7887 to discuss).

Curtain-raiser to our Toynbee Hall Month will be a programme called 'In the Baretts' Footsteps', about the past and present story of Toynbee Hall, given jointly by its director and deputy director - at 8pm on Thursday 28 May at Fellowship House (Willifield Green), admission £3. The slides will include historic photographs taken by Henrietta herself, with

the story brought up-to-date by others that show, for instance, Toynbee's summer training-camps in the country which help East End children with challenging behaviour or other special needs. There is going to be an associated exhibition too.

All this is being done under the auspices of the Dame Henrietta Barnett Fund, chaired by Simon Abbott of Hill Close, which was established to alleviate poverty, promote education and, in particular, help the work of Toynbee Hall. (It also assists impecunious students at the Institute and Suburb schools.)

The Suburb has previously given some help to Toynbee, in various ways (not only financial - for instance, the Fellowship House Club annually gives a tea-party for old people from the East End, and donates leftover jumble) but this year is special - the hope is to raise enough for a youth worker to be employed, helping to keep vulnerable children off the streets, developing skills that can lead to jobs and teaching good citizenship. As the patron of this effort, Martin Bell MP, (who lives on the Suburb) has said: "The cause is a good one... and we in the Suburb can make a difference."

Donations can be sent to the Dame Henrietta Barnett Fund c/o The Institute, Central Square, NW11. Legacies too are very welcome.

ELIZABETH GUNDREY

Wordsearch Winner

Congratulations to Mrs Moya Page of Oakwood Road, winner of the Winter wordsearch on British Cathedrals.

Moya has lived on the Suburb all her life and in Oakwood Road for fifty years. Moya was born in Easholm and moved as a baby to the house in which she now lives in Oakwood Road. She has lived in Ludlow Way, Fallowdon Road and Westholm.

She attended both The Garden Suburb and Henrietta Barnett schools.

After a course at Hendon Technical College, Moya worked at the BBC and with International Work Camps. She retired to raise her three children. They are, Lorna, now a senior biochemist in Cambridge, Marian, a teacher and prison visitor in Suffolk and Stephen, a farmer in Sussex.

Her second career spanning twenty years was in Voluntary Services at University College Hospital. Moya enjoys gardening,



swimming, reading, scrabble, and croquet. Now retired again and widowed, she is also involved with Fellowship House, being secretary to the Fellowship committee and on the driving rota.

She enjoys country holidays, travelling in Northern Europe avoiding the heat, and visiting her six grandsons.

With her £20 book token, Moya will replace her Atlas of Great Britain.

WORDSEARCH

TEST YOUR KNOWLEDGE OF SKI RESORTS

Find and ring the names of sixteen European ski resorts. The names are hidden in the box of letters and may read forwards, backwards, up, down or diagonally.

C P K Z G Q E W W M D B A
 T O O A I O C Y T Y K R D
 S N U I X W H A A L O S I
 B T G R A F C W I S U T N
 B R S O C S R O A R B A P
 P E T V Q H K L R E U N V
 M S A A S F E E G T Q T I
 B I A M S B P V L S I O L
 Q N D N I L F W E O H N L
 M A Y R H O F E N L A P A
 P S E N G I T Z S K Y M R
 R M W U X H E J H T L G S
 A U M M N E G N L W K V R
 J V M Z V W D O F C D T W

If you are a senior citizen, you may list the answers on a post card with your name, address and telephone number and post to: 35 Wildwood Road. The first correct entry drawn on the closing date, June 10th 1998 will receive a £20 book token. To help you on your way, we have given you the first answer. Happy Hunting!

WORDSEARCH ANSWERS FOR WINTER 1997

The names hidden in the box were:

Chester, Coventry, Edinburgh, Elgin, Ely, Exeter, Kirkwall, Lincoln, Llandaff, Norwich, Rochester, Salisbury, St Albans, Truro, Wells, Winchester

This was a popular Wordsearch with all entries correct.

I enjoyed seeing several entries from faithful wordsearchers and past winners! Better luck next time to everyone!

ELIZABETH WATKINS

Not just a one man band.



A chorus of over 100 offices in 22 countries worldwide.

80 Heath Street London NW3 1DN
 Sales/Lettings Tel: 0171-431 8686



Mayfair Sales/Lettings Tel: 0171-629 8171
 Kensington Sales Tel: 0171-938 4111
 Sloane Street Sales Tel: 0171-824 8171
 Wapping Sales/Lettings Tel: 0171-480 6848
 Isle of Dogs Sales/Lettings Tel: 0171-515 6565

A MODERN JUDAISM "RESPONDING TO CHANGE BUT ROOTED IN TRADITION"



is offered by

THE NORTH WESTERN
 REFORM SYNAGOGUE

Alyth Gardens
 Finchley Road, NW11

'Alyth' is a friendly community. It offers a first class Religion School, beautiful services in Hebrew and English, total equality for men and women, study opportunities for all, welfare support in times of difficulty, a range of social activities for all ages.

Enquiries for more information are especially welcome from Jews with no synagogue affiliation.

For further information contact: Community Director, Lynette Chazen on 0181 455 6763