

123 Parent & Toddler Group

People are delighted to take their children to the 123 Parent and Toddler Group. The three morning sessions are for babies and toddlers and include toys, playdough, glueing, painting, and singing with puppets. The Tuesday afternoons are a special Art session for two to four year olds.



Gillian Effingham

Gillian Effingham, who founded it one year ago, lays out all sorts of stimulating art work. She greets each child with "Hello, how nice to see you", as they stand in the doorway, wide-eyed, checking out what is on offer that day. Last week the room was laid out with small tables covered with autumn leaves, conkers, Michaelmas daisies, moss, and paint (and plenty of plastic sheeting). The children tend not to use the chairs, preferring to stand at their work.

Some, who have been regularly, rush straight in to the activity they most want to do. One or two newer members stand

uncertainly looking from the table crammed with things up to Gillian.

Every week Gillian introduces a different theme. The children can do creative modelling, with odds and ends, or work with clay or playdough. One intriguing idea is her use of small supermarket trays that contained fish or meat. She encourages the children to create a miniature world within them. Using cotton wool for snow, moss and earth for ground, and sand and shells, the child can construct a whole world with different habitats and climates in the space of a 20cm by 15cm tray.

One boy, Alexander Richards, had created a complete tangled wood out of autumnal leaves and branches, where his two hedgehogs (playdough and matchsticks) were chasing caterpillars (parts of egg boxes with pipe cleaners). He was very excited and explained the story in graphic detail. Move over Steven Spielberg.

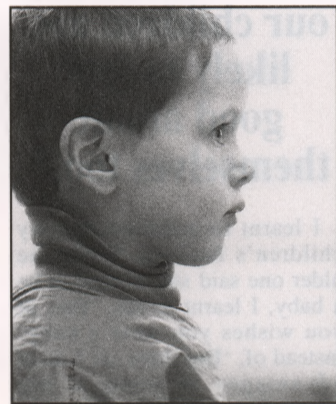
Gillian worked in Hampstead Garden Suburb Playgroup in Northway for seven years, and in the Pavilion Children's Centre for four and a half years. She had Fine Art training, and saw that she could fulfil a local need. She took the plunge, and set up her own group. The 123 Parent and Toddler Group has about fifty families on the books, but because of the unpredictable life with toddlers, they only turn up in small groups at a time. Most of the families in the Art sessions come from the Suburb.

The parents or nannies who take the children enjoy joining in



The Society of Friends (Quakers) celebrated the 80th Anniversary of the Golders Green Meeting in the Meeting House in North Square last month by throwing a lavish tea party for some 100 invited guests, Kitty Slack welcomed guests and introduced Jean Dyson, Jean Jenn, Annetta Hoffnung and Bryan Richards who gave an entertaining series of readings designed to "dispel the myth of Quakers being over solemn". Shown here, some of the Friends relaxing after serving teas all the afternoon.

RW



Charlie Murphy

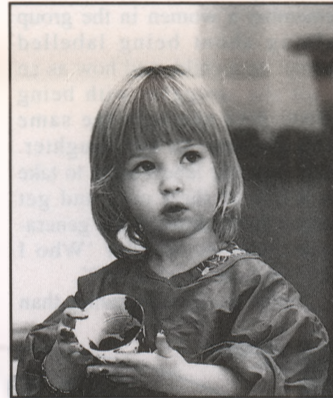
the activities themselves. They are all delighted to use the facilities. Mothers do not always have the energy or ability to set up a messy painting session at home. Jill Murphy, who is the author and illustrator of "The Worst Witch" series, brings her son Charlie. She says that for her to provide him with painting activities at home would be a busman's holiday, and she thoroughly supports the group.

For further information see "What On" section or contact Gillian Effingham on 458 5410.

JN



Yasmin Eldene



Laren Kramer

LETTERS

68 Denman Drive South
Hampstead Garden Suburb
NW1 6RH

2nd August '93

Sir,

As a local resident for more than forty years, I am most worried about the uncertain future of the Institute.

During my time here, I have seen the virtual demise of the Market Place which is no longer a centre for the community and with the lack of other social meeting places, the Institute is the only venue for those who are not very old or very young. Now with its expanded choice of classes it is more attractive than ever to every age group. Without it, the Suburb would still be beautiful, but lacking in human activity and creativity.

Yours,
Marjory S. Hall

84 Wildwood Road 31st July '93
NW11 6UJ
Sir,

The dispute between the Institute and the Henrietta Barnett School.

I deplore the legal action of the Institute and the decision of Barnet Council to take the matter to court. The fact is that we, the residents, and a wider public, need both institutions, and if the Institute goes into receivership, neither side will benefit.

My late husband's family came here in 1910, and I have been here since 1940. His sisters and our daughter have been educated at the school, and I have taught in both the school and the Institute - the latter since 1960 - so I well appreciate the value of both school and Institute. Henrietta Barnett wanted a community with a centre, namely the Institute, and the courses the Institute offers are becoming more and more important in this time of recession and high unemployment. What can be done now?

Yours,
Margery Neave

Civic Trust Extends the Hand of Friendship

The Civic Trust has launched a new initiative - The Friends of the Civic Trust - aimed at individuals who share the Trust's concern for the built environment nationally.

For just £15 per year Friends receive a copy of the Trust's quarterly journal *Urban Focus* with news of campaigns and projects throughout the UK, have access to the Trust's two libraries in London and Manchester and be eligible to join other Friends on the Civic Trust's exclusive tours and visits to places of interest.

Chair of the National Council of Civic Trust Societies and a Trustee of the Civic Trust, Francesca Upton is enthusiastic about the Friends scheme. "The Civic Trust has the ear of both Local and Central Government and is a very influential organisation. The more individuals the Trust represents the more effective it will be. I'd urge anyone who supports their local Civic Society to extend that support to the Civic Trust."

Application forms are available from Mary Hidalgo, Friends Department, The Civic Trust, 17 Carlton House Terrace, London SW1Y 5AW. Telephone 071 930 0914.

Alan Bennett returns

Alan Bennett returns to the Institute stage in December when the Garden Suburb Theatre presents his 1971 play "Getting On", directed by Robert Jayes. Although not one of his better-known plays it did enjoy a long run at the Savoy Theatre. It tells of two MPs from opposite sides of the house who are, nevertheless, good friends, and of a circle of friends and relatives who surround them. The play is written with humour and pathos and provides an opportunity to see Alan Bennett in one of his more serious moods.

The family show slot this season is to be filled by "Pinocchio", based on the original book by Carlo Collodi first published in English in 1892. The director, Bobbie Smith, describes it as a play with popular music and promises the familiar characters of Pinocchio, Geppetto, the Fox, the Cat and the Blue Fairy who, together with the Cricket and the tree spirits, guides the naughty wooden puppet in his quest to become a real boy. The production will be great fun and suitable for children (and adults) of all ages.

Details of dates and times are in the "What's On" column. DL

BRILL OWEN

CHARTERED ARCHITECTS

For a sensitive and sympathetic approach to architecture and interior design we offer a full or partial service to suit your requirements

NICHOLAS BRILL M.SC. DIP. ARCH. RIBA MBIM
ASSISTANT TRUST ARCHITECT 1987-88

5 DRYDEN STREET • COVENT GARDEN
LONDON WC2E 9NW • TELEPHONE 01-829 8436
FAX 01-240 5600

Rooms in the Suburb
Rooms with Bath
Parking

CENTRAL HOTEL

35 Hoop Lane
Golders Green
London NW11 8BS

Tel: 081-458 5636
Fax: 081-455 4792

Hamilton Fine Arts

Formerly Douglas Bryan Gallery

16, ARCADE HOUSE, HAMPSTEAD WAY,
LONDON NW11.

Telephone: 081-455 7410

Member of B.A.D.A.

THE JET LAG WATCH®



THE PERFECT ACCESSORY OR GIFT FOR THE FREQUENT TRAVELLER

MINIMIZE THE PSYCHOLOGICAL EFFECTS OF JET LAG AND ARRIVE PERFECTLY IN TUNE WITH YOUR NEW LOCAL TIME. THE PATENTED JET LAG WATCH® LETS YOU ADAPT NATURALLY TO A NEW TIME ZONE BY RUNNING SLOWER OR FASTER THAN NORMAL DURING YOUR FLIGHT. IT IS ELEGANTLY STYLED FOR EVERY-DAY WEAR WITH DUAL-TIME ZONES, DATE, DAY-OF-WEEK, AND ALARM FUNCTIONS. IT IS HANDSOMELY BOXED WITH COMPLETE EASY-TO-UNDERSTAND INSTRUCTIONS.

PLEASE SEND CHEQUE OR P.O. FOR £69.00 EACH (UK ONLY)

TO: ATN ENTERPRISES, 342 KILBURN HIGH ROAD, LONDON NW6 2QJ 071-328 9521

NAME: _____

ADDRESS: _____

POST CODE _____

TOTAL QUANTITY: _____

TOTAL £ _____

PRICE INCLUDES P & P DELIVERY WITHIN 28 DAYS