

CINDERS - A SPLENDID PANTOMIME

Terry Rogers has done it again! Brightened the dark days of February with a really splendid panto. However he is not the only one who should receive our praise for, quite apart from the large cast of actors, there were almost as many unseen talents at work elsewhere.

Take for instance the inventive setting - what a lovely forest curtain and how ingenious the transformation scene. The costumes as usual were gorgeous and the masks of the squirrels, rabbits and deer absolutely delightful. The programme lists Linda Zeff as Director, Jane Rogers and Olly Rogers as set designers and Frances Musker as costume design. But there are many other names with theirs too numerous to mention here and they are the makers, the painters, the unseen doers without whom there would be nothing to delight the eye.

Baron Hardup (very amusingly

played by Simon Ransey) has two frightful daughters as well as dear Cinders. Mike Ash as Sammanella and Jacques China as Listeria obviously enjoyed themselves and the old balloon dance routine was as funny as ever. Rebecca Street was a delightful Cinders for whom Tim Solomons's Buttons longed tenderly. Emma Solomons not only looked extremely elegant as Prince Charming but had a good voice and put over the songs well. She was similarly supported by Lorraine Finnerty as Dandini. Liz Boulter, who was unable to shine in the previous production, made a good sinister character

out of Montmorency and she and Joanna Ellis as Maxwell made an interesting pair. Lightning, the horse, was inhabited by Carolyn Pike and Janet Pleshette but we do not know who was in either end. Last but not least there was the redoubtable Fairy Godmother of Lynn Radnedge - a no nonsense Fairy. The various dance routines by Bobbie Smith were very inventive; especially nice was the dance for the Bears in "If You Go Down To The Woods Today".

Carole Clarke led the musical accompaniment made up of keyboards, guitars, oboe and drums from the piano. LS



HGS Theatre presents "Twelfth Night"

The Garden Suburb Theatre's summer production in Little Oak Wood is to be Shakespeare's "Twelfth Night", a firm favourite with audiences, which was last produced here in 1981.

Director Diana Bromley, whose most recent production was the highly acclaimed "The Comedy of Errors" two years ago, feels that "Twelfth Night" is ideally suited to the open air and has assembled a cast of both old and new faces to fill the familiar roles.

Diana herself appeared in last summer's "The Importance of

Being Earnest" playing Miss Prism. The Canon Chasuble in that production was Fred Griessen who turns up again this year as the pompous Malvolio.

The play should look sumptuous - Diana and costume designer, Frances Musker, are taking as their theme the style of the 18th century French painter, Watteau.

Details of "Twelfth Night" and the May production "The Lion in Winter" (featured in the last issue of Suburb News) are in the 'What's On' column.

Spring in Meadway Gate

*The icy wind blows cold
as I walk along Hoop Lane,
But then I see the little garden
of Meadway Gate
with yellow laburnum, magnolia and pink
blossom around.
I realise Spring is here
and I smile.
I see a person in the phone box smiling,
I see people sitting on the wooden benches
smiling.
When Spring is here people
feel happy,
The world is a better place.*

Peter Rosen

Summer Festival for Pavilion Playgroup

The Pavilion Playgroup, celebrating its 10th year, will be holding its annual summer festival this year on May 9, in the Lyttelton Playing Fields, from 2.00 pm to 5.30 pm.

A great time is guaranteed for all the family with attractions to include a carousel, train, ball pond and live entertainment for the toddlers; beat the goalie, lucky dip and hook the duck for the children; tombola, raffle and a range of stands selling attractive craft items for the grown-ups. Delicious refreshments will also be available. The festival will be officially opened by the Worshipful the Mayor of Barnet, Cllr Fred Poole.

The Pavilion Playgroup will be celebrating its 10th anniversary

year in 1993, and the money raised at the festival will be used to improve the facilities offered by the playgroup, with a donation going to the Royal Free Hospital, Hampstead, special care baby unit.

The Pavilion Playgroup offers unique facilities to babies and toddlers and their parents and carers in Hampstead Garden Suburb and the surrounding areas. It is open every weekday for stimulating play and enjoyment with two or three sessions per day. The sessions are held from 9.30 am-10.45 am, and 11.00 am-12.15 pm, costing £1.50 per child and 50p each additional sibling.

For further information please contact: Shelley Goldstein, 82 Addison Way, NW11 6QS, tel: 081 455 7786.

THINKING OF JOINING A TENNIS CLUB THIS SUMMER?

Come to our OPEN DAY on Sunday, 2nd May 1993 from 2 pm to 5 pm.

We welcome new members of average club-playing standard.

Membership details from Esme Kingsley

081-203 1731

FARM WALK TENNIS CLUB

DAVID BAKER
ARCHITECTS
109D REGENTS PARK RD
PRIMROSE HILL
LONDON NW1 8UR
FAX: 071 722 0030
TEL: 071 722 7220

BUILDING DESIGN
CONTRACT MANAGEMENT
INTERIORS & FITTINGS
TECHNICAL GRAPHICS

Having truly established ourselves in Hampstead Garden Suburb . .

. . . we feel that we can say we know how you like to be treated. That is why our Hampstead Garden Suburb Staff are patient and prepared to spend as much time and effort as is necessary to find your exact requirements - whether it takes one week or one year.

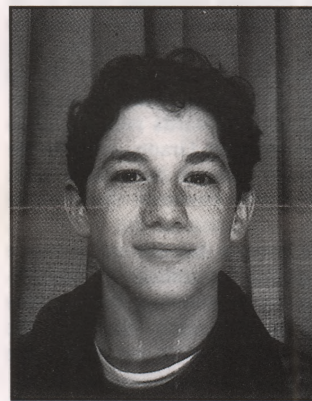
If you are looking for a home - come in and let us prove that we are the Property Professionals.



14 The Market Place
Hampstead Garden Suburb
LONDON NW11 6JJ.
Tel: 01-458 8448

WORDSEARCH WINNER

Congratulations to Alexander Jacobs of Constable Close who won the Winter Wordsearch on European ski-resorts. Alex, who is a fourteen year old pupil at St Paul's School, is a very keen skier and was able to tackle the hardest Wordsearch. Alex likes the outdoor life and enjoys survival and frost-bite camps with the Scouts. He will soon continue with the Venture Scouts and complete his Duke of Edinburgh's Award. He also enjoys tennis, swimming, walking, jogging and wind-surfing. When relaxing with his three cats, he listens to rock and heavy metal music and plays the classical and electric guitars. At school he likes history and maths which he hopes will lead him into a career in the Law. As he likes daring pursuits, Alex has an ambition to go Bungy Jumping. With his £10 book token, Alex hopes to buy guitar music.



WORDSEARCH

TEST YOUR KNOWLEDGE OF BRITISH POETS

Find and ring the names of fourteen well-known poets who died before the end of the 19th century. The names are hidden in the box of letters and may read forwards, backwards, up, down and diagonally.

K C A B Z E G D I R E L O C K E A
F E D H O J Y W X N U T M L F D D
G E A P K Q I J O V N H Y G E R B
I U S T L R V R X W Y S X I T Y C
T O N M S L Y O M B P O P E S D R
N W U M K B F G C J Z O W O A E Z
O P Q I S P N D H E U R I V P N E
T H R L E R A E P S E K A H S Q B
S T U T T V U M L F O E D F U C U
B R Q O R B A V E T U Y O Y L G M
L O U N O L E I W G E X I N A K O
C W K W J A F X G L H N Q E P R J
E S A X B K Y I L H K J N Y A H G
D D O N N E J E H Y B E D Y Z B C
L R G V Z T H K N C F X O P S N M
F O H S U S M L D G P U R Q V O S
K W J R Q O G N I N W O R B W T N

If you are a senior citizen, you may list the answers on a postcard with your name, address and telephone number and post to: 35 Wildwood Road. The first correct entry drawn on the closing date, 10th June 1993 will receive a £10 Book Token. To help you on your way, we have given you the first answer.

Happy Hunting!

EGW

MAINTAINING
MY HOME IS
COSTING ME
A FORTUNE!

NOT ME!
I'M A
MEMBER OF
HOMELINE

From less than £3 a week -
The HomeLine "HomeCare Plan"
keeps your property in
year-round top condition.
And no hidden extras.

The "HOMECARE PLAN" . . .

The best ideas are the simplest

And what could be simpler - or better value - than the "HOMECARE PLAN"? All it costs is a small annual subscription from £150, including VAT! Immediately your maintenance problems are solved at a stroke . . . and on a 24-hour-a-day basis.

How the "HOMECARE PLAN" covers you:

Basically, the plan covers full repairs and regular maintenance of your main roof, all guttering and down pipes, all your drains and your plumbing system. We'll even change a lightbulb for you, if you need! And the work is always carried out by our own experts, employed solely by HomeLine.

No charges for call-outs, labour or materials

Many contractors charge substantial call-out fees, quite apart from labour and materials costs. With HomeLine you get everything absolutely FREE!

Your guarantee of expertise

HomeLine is a full member of the prestigious Federation of Master Builders. The Federation demands extremely high standards, giving you the certainty, and the real security, of dealing with an honest and highly experienced company.

HomeLine has many satisfied customers on the Suburb and we would be happy for you to ask them about our service.

How to get complete details:

Phone us on

081-348 1709

We will send you a full information pack on HomeLine's "HOMECARE PLAN" immediately.