

SUBURB NEWS

Issue 39

THE NEWSPAPER OF THE HAMPSTEAD GARDEN SUBURB RESIDENTS ASSOCIATION Spring '93



This colour Spring issue of Suburb News marks the end of our tenth year. We would like to say thank you to all our contributors; to our advertisers, some of whom have been in nearly every issue; to our voluntary distributors who ensure delivery to

every home on the Suburb, and to our readers for their interest and appreciation. We hope we have gone some small way to achieving the original objectives of Suburb News "to foster community spirit and enhance the life of the Suburb".

RA REPORT

This year's **Annual General Meeting** has proved again that the Residents Association is a vital and active part of the Hampstead Garden Suburb. It covers a wide perspective of our environment, and this year's meeting was informative as well as social - those residents who did not attend must take the opportunity to do so next year!

Many of the problems that involve the RA continue - **parking** around the educational block (the Henrietta Barnett School/The Institute) is being carefully researched by involving residents, the School, the Institute and police, and all views are being considered before any formal plans are taken to resolve this problem.

One of the regular meetings between the RA and **London Borough of Barnet** took place in January, covering arboricultural as well as environmental matters - a practical and helpful liaison. Comment Cards now issued by the LBB, obtainable from Libraries and Council Offices, are welcomed, and hopefully residents will use them when necessary. Bernard King from the Borough is liaising with the RA on plans to extend future schemes for **recycling** plastic, paper and cans. Bins need to be located where it is easy to monitor when they need to be emptied, and sited where residents can go on a regular basis. This would ultimately see the bottle banks in Hampstead Way removed. Suitable sites need to be identified. We are assured that yellow litter bins will gradually be replaced by green bins. It is good news that the LBB has now appointed a **Recycling Officer for the Borough**.

Our representative for **Memorial Seats**, replacing J A Angus, is now Mrs Janette Harris, who was also one of the

Honorary Life Members nominated by the RA Council in recognition of her valued support over many years. The other recipient was Mervyn Miller, whose work for the HGS Trust and his recent book "Hampstead Garden Suburb" with co-author Stuart Gray has illustrated his expertise and continual support for the Suburb.

News of our Council members - E. Caplin has been co-opted to serve on the **HGS Trust Council**, and so has resigned from the RA Council; Spencer Hudson is now **Tree Warden** for a pilot project of the LBB; Chris Dickinson is closely involved with the **Brookland Rise** plans for proposed expansion of the School and arising problems with cars and parking. He is working with local residents, local authorities, school and police.

The coming **Suburb Weekend** will be a welcome example of how the community can join together to demonstrate creative and entertaining activities. Your support is actively needed at this time to demonstrate our community spirit.

It was agreed at the AGM that an **Environment Committee** on the RA Council would be a positive contribution, and creating this new venture needs members from the Suburb who are concerned and willing to take part. Contact us!

In February, the RA Council welcomed a talk given by Miss P Edwards, Chairman of the **Henrietta Barnett School** and Mr M Wilson, Chairman of its Finance and General Purposes Committee, outlining their views on the current financial problems. Miss Whelan reiterated the hope that both the School and the Institute will survive.

Institute statistics that may interest you - 48% of the 2900 students come from the NW11, N2, and N3 areas, and 60 members of staff live on the Suburb.

Institute vs. Henrietta Barnett

The contentious issues of the Institute's finances and whether they can or should be remedied by charging rent to Henrietta Barnett School came to a head last month when the Institute Council served notice on the School that expires at the end of this year.

This action followed the long awaited legal opinion that the School has no legal right to remain and that, if it does it should pay for its use of the buildings. In the light of this opinion the Institute's trustees were bound to take the action they have.

The Residents Association has made it clear that it has no wish to take sides but nevertheless resolved at its last Council meeting to write to the Institute expressing "concern and sadness that the matter should have been handled in this way".

John Patten, Secretary of State for Education told Jane de Swiet, Henrietta Barnett's headmistress, that he was shocked at the Institute's attack on the school and would do all he could to help. Barnet Council has said it is involving the Charity Commissioners, proposing legal action to compel the Institute to withdraw its eviction notice unless it does so voluntarily. The Charity Commissioners however are not likely to get involved in any legal action.

New building at risk

The School is likely, if the situation is not resolved soon, to lose £850,000 allocated by the Department for Education for a new Design and Technology building. The Institute's Council decided on March 17 to refuse permission for this building. This despite the fact that it would have provided extra room for the Institute's use at night and

additional rooms for daytime use by the Institute.

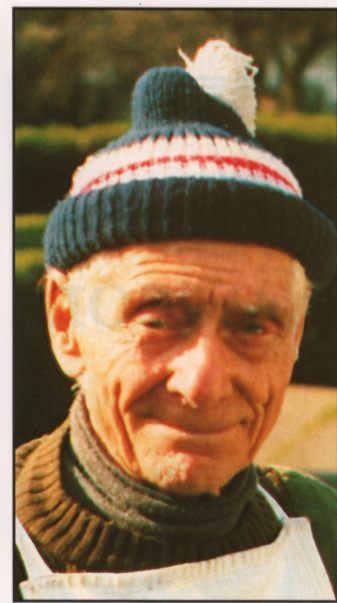
The Institute claims on the other hand that lack of space means it can not take advantage of opportunities such as a recent approach by Middlesex University to run courses and an offer by a benefactor to equip a computer room.

Beleaguered

The Institute does unfortunately seem to be out on its own with the Secretary of State, John Marshall, Roy Shutz and Barnet officers supporting the School. However Fay Naylor, Institute Principal, stresses that together with the notice to quit there was an invitation to the School to continue negotiations. "Relations between the heads and their respective staffs have remained amicable throughout", she said. "I am sure we will find a way for both to continue their use and occupation of the Institute's premises".

In the hope that it will help residents to understand both sides of the story we publish in full press releases from the School and the Institute together with a background paper prepared by Carol Boulter (see page 6). **RW**

Laurance Norton



Laurance Norton in Meadway, shortly before retiring from his greengrocery round at Easter. Now 80, Mr Norton has been rising at 3 am to bring fresh vegetables to the Suburb since 1946, which was when he was demobbed after his regiment's return from Burma. His cheerful smile will be much missed and he says "I will miss the customers I have known for so long. **RW**"

A note for your diary - at the **RA Council meeting** at Bigwood House on May 4, Mr Caller, Chief Executive of the LBB, is our invited speaker to talk about the obligation on Local Authorities to publish a number of performance indicators under the **Citizens Charter**, and the proposals of our Borough in this respect. **S de P**

Suburb Weekend

Because it was felt that the Suburb needed a celebration a truly splendid programme has been arranged for Saturday 22nd and Sunday 23rd May. The events range from an opening ceremony in Asmunds Place when "Dame Henrietta" will be cutting the first sod to other theatrical happenings, music, chess, tennis, exhibitions, a walk of discovery through Bigwood and gardens open to the public. All this is linked with the annual Family Holiday Association's Grand Fete and the Saturday evening will end with a Jazz Concert and Eats and Drinks in Central Square. As a finale on Sunday there will be a concert at St Jude's which will include music from the Christian and Jewish tradition.

In a joint message Eileen Whelan and Gerry Mansell said: "This programme of events for the weekend of 22 and 23 May evolved from an idea by Chris Kellerman.

In the context of our tribulations during the last year, this event has become a way of showing that we are all one Suburb and that there is a real community here. All the organisations participating are also keenly aware of the need to demonstrate our community activities. Their enthusiasm has been channelled by a hard-working committee, ably steered by Joyce Morrison. The RA and the Trust are grateful for their commitment.

All that remains now is for you to turn up and enjoy yourselves on Saturday and Sunday 22 and 23 May.

From Cottages to Castles

We are at home in the Suburb

A home is a very special place, particularly so in the Suburb. It is filled with a lifetime of experiences.

A safe haven, a welcoming friend.

Alas, eventually even homes need to be sold or let. We feel it is incumbent on the agent handling the transaction that they not only have an intimate knowledge of the area, but recognise that a home is much more than bricks and mortar.

Glentree is such an agent. For many years we have been handling Suburb properties and we are at home with everything from "cottages to castles".

A further benefit to the Suburb's residents is our extensive contacts with potential buyers outside the immediate area.

At some time in the future, without obligation, we would be pleased to give you advice on your property.

You will be talking to us in the knowledge that we too are at home in the Suburb.



GLENTREE
ESTATES

698 Finchley Road, London NW11 7NE
Sales: 081-458 7311 Lettings: 081-209 1144