

WHEELIE OFFENCE

I have noticed that an increasing number of Suburb residents are putting their wheeled bins on the pavement on collection days. This is probably because residents are afraid of being forgotten, given that the new refuse collection system has so far been such a hit-and-miss affair.

BUT, at the meeting between representatives of the Suburb and officers of the Borough's Directorate of Technical Services on 16 September, it was reiterated that leaving wheeled bins on the pavement is an offence under the Highways Act, 1980. The correct collection point (except where this is assisted collection and/or a different collection point has been agreed with the Borough) is

just inside the curtilage of your property.

It cuts the ground from under our feet in complaining to Barnet about the refuse collectors leaving bins on the pavement if we ourselves commit the same offence. And just consider for a moment the plight of a blind or partially-sighted person trying to negotiate such an obstacle-race on collection day.

One of our main objections, when wheeled bins were first introduced, was their unsightliness in a prestigious Conservation Area. Please try to keep our Suburb looking beautiful.

Eileen Whelan
Chairman, RA

BLASTED OAKS

Earlier this summer two large oak trees were pollarded in Erskine Hill. Following complaints from local residents and the Trust the matter was discussed at Barnet's Public Works Committee Meeting on 26 September. It was agreed that the Director of Technical Services should arrange a meeting with the Trust to review the lines of communication and consultation before carrying out future tree works on the Suburb.

CK

PVC WINDOWS

Residents of the Suburb have been receiving leaflets from a firm offering to install uPVC, Aluminium or Mahogany windows, doors, patios etc at a specially reduced price. This appears to be on the understanding that an advertising sign is placed on the property for a time and that photographs of the work may be taken. Any resident taking up this offer must bear in mind that the new windows, door, patios etc must match the existing and in any case that approval must be obtained from the New Hampstead Garden Suburb Trust.

DEM

Henrietta Barnet comes top

Just in case any of our readers missed the massive media coverage of the last month given to the Sunday Times league table of state schools, Henrietta Barnet came top of the form with the highest percentage of high level passes at A level in the country. Congratulations to all concerned.

Footpath

In 1992 Barnet are going to establish a new long distance footpath from Moat Mount to the Hampstead Heath Extension. It will run north of Totteridge and then continue through Woodside Park before entering the Suburb. After passing through Big Wood and Little Wood, the path will join Hampstead Heath via the twitten at the end of Meadway Close. It will link public open spaces, existing rights of way and some new sections of path.

CK

Apologies

Apologies are due to our MP John Marshall for captioning him as John Major in the summer issue. Also to Barbara Honeyball and the Georgetown family for transposing their pictures.



The HGS Horticultural Society has had a successful season with shows in July and September. Whilst the serious prizes were for magnificent displays, fabulous flowers and vegetables carried off by Mary Aldred, Mrs Squires, Jack Previtt, Ken Murrell and Joyce Wheatley, the children's prizes generated the most excitement amongst their winners. However some of them were persuaded to keep still long enough for a group prize winners picture.

Could you do with a new interesting job?

Four times a year Camilla Raab checks through her list of distributors of Suburb News, finds replacements for those who have dropped out and endeavours to find new distributors so as to lighten the load for people who are called upon to deliver too many.

Camilla then writes, on preprepared forms, the name and address of each distributor and

the road numbers for delivery.

On the day of publication a coffee party at the Editor's house counts the correct number of papers into bags that are then collected by main distributors for delivery to sub distributors. This part of the operation takes about two hours on a Saturday morning.

It is an interesting and rewarding job, nevertheless

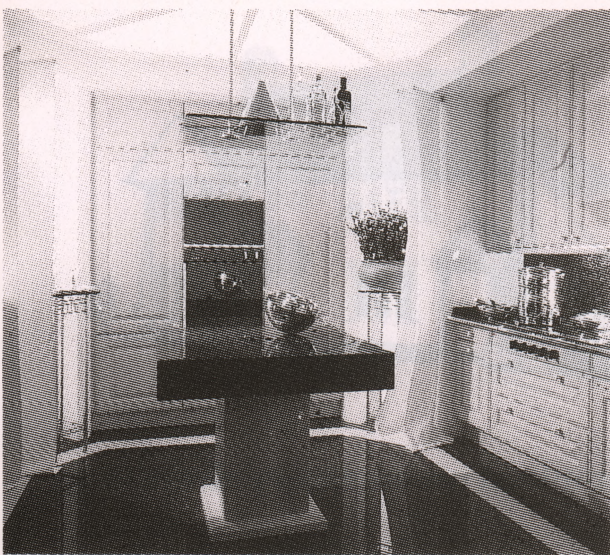
Camilla would like someone else to enjoy it now.

We need a resident who knows the Suburb well, can organise things and enjoys getting to know lots of fellow residents. We'll even give you a title, 'Circulation Manager'.

Please phone Camilla Raab on 081 458 2746 or Neville Silver 081 455 0494.

THE BEST

THE SIEMATIC 1001 KE RANGE
IN JASMINE SOLID OAK



KITCHEN COMPANY

There are some very good reasons why it pays to spend as much time choosing the designer as you would the actual kitchen.

To put it simply - will the project be complete, finished on time, to your exact requirements, with the minimum of fuss and within the prescribed budget.

Our SieMatic Design Centres achieve all these standards with exceptional creative flair. Not surprising when you're working with the Best Kitchen in the World, it kind of comes naturally. Satisfied? - now carry on and choose your kitchen.

SieMatic
The Best Kitchen In The World



INTERIOR FUTURES LIMITED

35-37 MARKET PLACE
HAMPSTEAD GARDEN SUBURB
LONDON NW11 6JG
TEL: 01 455 9013

SIEMATIC KITCHEN FURNITURE IS ONLY AVAILABLE FROM APPROVED DESIGN CENTRES
PRICES START FROM AROUND £5000 EXCLUDING APPLIANCES AND INSTALLATION

WHAT'S ON

The Pavilion Children's Centre - Lyttelton Playing Field
N2, 0-3 yrs, Mon-Fri, 9.30 - 10.45am & 11 - 12.15pm,
Mother and toddler playgroup. 3 - 5 yrs Music & Art
classes, afternoons. Further details from Lisa Aharon -
081 455 4101.

OCTOBER

- 21-25 HGS Institute, 'Tumbling Toddlers' Daily, 9.30-10.30
- 23 Neighbourhood Watch, Co-ordinators Meeting, Fellowship House, Willifield Way, 7.30pm
- 30 Neighbourhood Watch, Wardens' Instructional Evening, Fellowship House, Willifield Way, 7.45pm
- 31 HGS Floral Arrangement Club, Demonstration, 7.45pm Fellowship House

NOVEMBER

- 2 Save the Children Fund Annual Fair, Tea House, Northway, 10am - 12.30pm. Christmas cards, gifts, handicrafts, jewellery and plants. Admission free.
- 2 Royal National Lifeboat Institution, Annual Bring & Buy, Cakes, Raffle, Refreshments, Bric a Brac, Books, etc. Fellowship House, Willifield Way, 2.00 - 4.00pm.
- 3 St. Jude's Church, St. Jude's Day. Preacher Prof. Roy Porter. 10.00am.
- 3 St. Jude's Patronal Festival Lunch, St. Jude's Church Rooms, 12.30pm.
- 4 HGS Townswomen's Guild, Talk 'Sugar is a Business' by Mr. B. Rusby. St. Jude's Church Rooms, 2.00pm.
- 10 Combined Churches Remembrance Service, St. Jude's Church, 10.30am.
- 12 League of Jewish Women. Talk by the Rev. Peter Speed, Chaplain of the Royal Free Hospital.
- 16 HGS Free Church, Free Church Bazaar, Free Church Hall, 11.30am - 3.00pm.
- 21 Historical Association, Hampstead & N.W. London Branch, Lecture - Monasticism under Mary Tudor, Westfield College, Kidderpore Ave, NW3. 8.00pm. Non-members are welcome to attend.
- 23 HS Craft Fair, Free Church Hall, Northway, 10.00am - 5.00pm. Door monies & refreshments in aid of North London Hospice.

DECEMBER

- 1 HGS Free Church, Advent Carol Service, 6.30pm.
- 2 HGS Townswomen's Guild, Talk 'Colour Analysis' by Mrs. H. Gee, St. Jude's Church Rooms, 2.00pm.
- 5 Historical Association, Hampstead & N.W. London Branch, Lecture - The Hapsburg Empire, 1815 - 1918, Dr. Alan Sked, Westfield College, Kidderpore Ave, NW3. 8.00pm. Non-members are welcome to attend.

- 6 HGS Institute, Term Ends for English as a Foreign Language Classes.
- 7 Hampstead and District Scots' Association, Christmas Dance, Golders Green Parish Church Hall, West Heath Drive, NW11. 7.30 - 11.00pm.
- 14 HGS Institute, Term Ends, Adult Courses.
- 14 Harington Scheme, Open Day, sale of Christmas trees, dried flowers, home produce, bulbs & plants, in the grounds of Furnival House, Cholmeley Park, Highgate Village, 10.00am - 1.00pm.
- 16 HGS Townswomen's Guild, Christmas Lunch, St. Jude's Church Rooms, 12.30 for 1.00pm.
- 22 HGS Free Church, Nine Lessons & Carols, 11.00am.
- 22 St. Jude's Church, Carol Service, 4.00pm.
- 24 St. Jude's Church, Nativity Play, 4.00pm. Midnight Mass 11.30pm.
- 22 St. Jude's Church, Christmas Day Service, 10.00pm.
- 25 HGS Free Church, Christmas Morning Service, 11.00am.

JANUARY

- 5 St. Jude's Church, Children's Epiphany Gift Service, 10.00am.
- 6 HGS Townswomen's Guild, Talk 'Hearing Dogs for the Deaf' by Mrs. L. Lightbody, St. Jude's Church Rooms, 2.00pm.
- 8 HGS Horticultural Society, Lecture. Fellowship House, 8.30pm.
- 13 HGS Institute, Spring Term Begins.
- 21 Hampstead and District Scots' Association, Burns Night Dance/Supper, Golders Green Parish Church, West Heath Drive, NW11. 8.00 - 11.00pm.

Every Tues. Suburb Bridge Club, Partnership Rubber, The Tea House, 7.30 pm - Enquiries to Hon. Sec., Mrs Claude Glough, 444-8774.

Every Thurs. WEA, Golders Green Library, 'What's in the News' Current Affairs, 10.30am - 12.30pm.

Every Fri. WEA, Hendon Library, 'American Drama' including Theatre Visits. 10.30am - 12.30pm. for details of these and other WEA classes call 081 452 8850.

FREE FOOD FOR GOURMETS!

All members of the HGS Gourmet Society have been invited to an evening cooking demonstration and free food by a prestigious local shop. To find out more, phone The Secretary, HGS Gourmet Society on 458 1238.

DEADLINE for Winter issue December 20 for publication January. Items for What's On Column to Liz Tarn, 40 Meadway, NW11 6PJ. Contributions and letters to the editor R.J. Wakefield, 26 Hampstead Way, NW11 7JL.