

PAVILION FESTIVAL



Highgate School Band.

The Highgate School Band helped the carnival atmosphere along on Lyttleton Playing Fields as Pavilion Childrens Centre's Annual event got underway.

Opened by the Mayor of Barnet the area in front of the Pavilion had been turned into a fairground with a train, donkey rides and other fairground attractions.



Kathy Cunnold.



Albert Benson, Claire Foley and friend.



Jason Saunders.



The Mayor chats to Chief Superintendent John Witham and WPC Linda Bailey almost invariably in attendance at Suburb functions.

CENTRAL HOTEL

TEL: 458 5636

PRIVATE BATHROOMS AND PARKING

35 HOOP LANE, GOLDERS GREEN, LONDON NW11

PROPS: MR & MRS E. TANNER

SUMMER IN MEADWAY

Summer.
*Warmth creeps along the road
tree by tree,
reasoning them colourfully.*

Mead.
*Intoxicating liquor
for longer, lighter evenings.
Honey ferments
as dewdrops condense.*

In a way
*such that summer can pass
through its chosen route,
in desirable style,
unhindered each day,
liberate Meadway!*

by Tara Banerji

WORDSEARCH WINNER

Congratulations are due to Polly Edwards of Addison Way who won the Spring Wordsearch competition on British Newspaper titles. Polly, aged 11½, was born in the suburb. She is interested in news and reads to keep up with current events. Polly has just left the Garden Suburb Junior School and is looking forward to starting at Hendon School in September. Polly has many interests and just a few of them are covered here. Her favourite sports are swimming and football and on Saturdays, she plays in a girls football team on the Heath. She also loves cycling and walking, having just completed the ten-mile Cadbury's Strollathon from Hays Galleria. Polly also loves music and drama. She plays the cello and piano, sings with her family in St. Jude's choir and belongs to a drama group. She listens to Capital Radio and classical music too. She spends much of her time sketching and reading novels by Catherine Cookson and horror stories by R.T. Cusick. When she has time for television, Polly likes to relax



in front of Neighbours and Poirot. Polly would like her career to be in space science. Her interest has been stimulated by work with her own telescope at home which has given her some knowledge of the night sky. Polly's goal is to travel to Africa and Australia, but at present her favourite holiday is skiing. She plans to buy a wildlife book with her £10 Book Token.

EGW

WORDSEARCH

TEST YOUR KNOWLEDGE OF THE PLAYS OF WILLIAM SHAKESPEARE

Find and ring the names of twelve of Shakespeare's plays hidden in the box of letters. They may read forwards, backwards, up, down and diagonally.

R O N T E L M A H E A O V I T
T I Q M A C B E T H E Y A W U
E P C R F X E Y A L R D E I B
I T S H G W D C B N K L C N F
L H K U A V J Z E M T J H T T
U P O K N R I H K H L T M E I
J Q O V I U D Z N W X S Y R E
D G L F T N E I D C B E A S K
N R L S H I G J I K L P M T I
A T E S R H Q L P I O M N A L
O U H V T W X C E Y B E Z L U
E D T E F H J M K A L T A E O
M B O Q G R P N O T R U V W Y
O C R A S A E C S U I L U J S
R H D G E S F J A Z K Y M X A

If you are under fifteen on the 5th September, you may list the answers on a postcard with your name, age, address and telephone number and post to: 35 Wildwood Road. The first correct entry drawn on the closing date, 5th September, 1991 will receive a £10 Book Token. To help you on your way, we have given you the first answer. Happy Hunting!

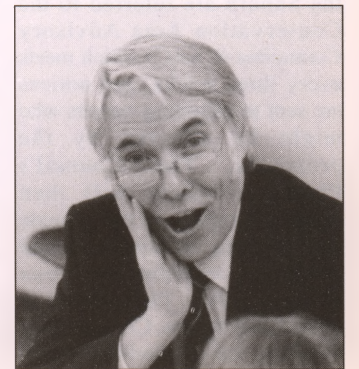
EGW



SUBURB BELL RINGS AGAIN

As a child living in Erskine Hill, Michael Holton sometimes heard, of a summer's afternoon and generally about tea-time, the sound of a hand-bell rung from the old Club House by Willifield Green. During Environment Week 1991 he led a walk through the Old Suburb, explaining the story of the area from the Ice Age onwards and carried with him the same bell. As the party rested at Tony Mandelson's memorial seat on the Green, he tolled it while contemplating the tragedy of the failure of the powers that were to rebuild the Club House after the last war, as it had been the Suburb's social centre for its first thirty years. He had found the bell in the loft of his house in Hampstead Way in 1961 and went to return it to the previous owner's daughter, Betty Mayles, who explained its origins and asked him to keep it. Her grandfather, William Moss, an

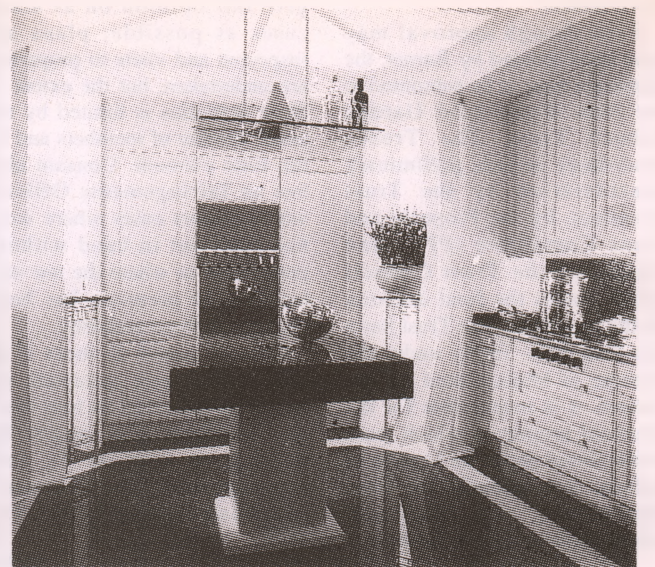
original resident, had been associated with the Club from its beginning. After its rediscovery, the bell was rung to call the family to meals, and in Fellowship House on the site of the old Club, but he hopes that one day it might find a place in a collection of old Suburb artefacts among the archives. MH



Lynn Edwards at a St Jude's party last year. See P2.

THE BEST

THE SIEMATIC 1001 KE RANGE IN JASMINE SOLID OAK



KITCHEN COMPANY

There are some very good reasons why it pays to spend as much time choosing the designer as you would the actual kitchen. To put it simply - will the project be complete, finished on time, to your exact requirements, with the minimum of fuss and within the prescribed budget. Our SieMatic Design Centres achieve all these standards with exceptional creative flair. Not surprising when you're working with the Best Kitchen in the World, it kind of comes naturally. Satisfied? - now carry on and choose your kitchen.

SieMatic
The Best Kitchen In The World

INTERIOR FUTURES
INTERIOR FUTURES LIMITED
35-37 MARKET PLACE
HAMPSTEAD GARDEN SUBURB
LONDON NW11 6JG
TEL: 01 455 9013

SIEMATIC KITCHEN FURNITURE IS ONLY AVAILABLE FROM APPROVED DESIGN CENTRES. PRICES START FROM AROUND £5000 EXCLUDING APPLIANCES AND INSTALLATION.