

SUBURB NEWS

Issue 32 THE NEWSPAPER OF THE HAMPSTEAD GARDEN SUBURB RESIDENTS ASSOCIATION Spring '91

THE GAS MAIN COMETH

The largest single engineering project undertaken by British Gas North Thames for 15 years has now started in the heart of the Suburb with the laying of a massive 30 inch diameter pipe line along Willifield Way and Hampstead Way. There can be little doubt that this work is going to cause extensive disruption, frustration and misery to the daily lives of many Suburb residents – particularly those living in Willifield Way and the adjacent roads – and this will last for at least six months. But, despite this, British Gas have refused to give the residents any details other than barest of facts.

The Residents Association has been trying for the past three months to obtain details and assurances from British Gas on specific matters in respect of noise, supervision of the work, access to properties and details of the contractor's work specification, but any information on all such questions has been curtly refused. It is not therefore surprising that deep concern is now being expressed by residents who fear that British Gas will have little regard for the inevitable disruption that will be caused to their daily lives over the next 6 months.

It had been hoped that the setting up of the Information Office on the Heath Extension would be able to allay many matters of worry and concern, however it is understood from residents who

have visited this office that the officials on duty have little knowledge of the impending work operations and are able to provide only the minimum of information. The limited hours of opening (10 am to 3 pm) and the lack of any telephone lines does little to inspire confidence in this public relations exercise.

The Residents Association will be keeping a watchful eye on events and has suggested that, if residents have any complaints to make as a result of the work, they should contact the site supervisor of British Gas (assuming that his location and phone number will eventually be made known). If no satisfaction is obtained, the Construction Engineer, Mr Jack Worts or the Project Engineer, Mr Bogdan Kowalewicz – both based at an office in Staines (tel.



The British Gas 'Lego' hut complete with 'garden' but not on the phone.

0784 461666) – should be contacted immediately. NS.

NAUTILUS – DOWN BUT NOT OUT

At last it appears that the long and drawn out battle against the numerous and offensive activities of the Nautilus operations in the Market Place are meeting with some success. Firstly, various summonses by Barnet and the police have removed the hideous advertisements mounted on car roofs. Following this and appeal inspector's ruling, the hostel type accommodation on the upper floors of the building has been vacated – this has also significantly reduced the crime rate in the immediate vicinity. Also the owner has at last now removed the illegal rear staircase and railing to the flat roof – but only after the serving of an enforcement order, a DOE's inspector's ruling and the issue of a summons.

AGM

The RA's AGM heard reports from the Chairman and from standing committee on the many activities undertaken on behalf of Suburb residents by the Association.

Donald Sinden brought a touch of theatre to the proceedings when he told the meeting that residents of Lucas Square had, on principle, refused to pay substantially increased charges levied by the Trust without any prior consultation for maintenance of the square's gardens and asked what the RA were doing about such charges.

The Chairman replied that there seemed to be no little confusion about who was responsible for what but that the subject was on the agenda for the next RA/Trust liaison meeting.

All the RA officers were re-elected along with three new council members Mrs Bridget Malcolm, Mrs Richardson and Mr Stephen Fogel.

Two new RA honorary members were announced, Barbara Anderson and Kitty Slack had both worked untiringly for Suburb causes for many years.

GOLDERS GREEN STATION

The Garden Suburb Entrance to the tube station is safe, for the moment. London Transport stated in letters to complainants in January that, "it is our intention to keep the entrance open to ticket holders during the peak hour." So a partial victory as a result of all the representations, but the situation remains unclear. MP John Marshall, with former Treasury Minister and Suburb resident Edmund Dell, presented a 4200-signature petition, organised by Johnny Buccheri and Peter Jude, owners of the two businesses at the entrance, to London Transport in early February and was told that it would be closed outside peak hours. However LT did not have the courtesy to tell them at the meeting what was announced to the press immediately afterwards, namely, that because of the terrorist threat, the entrance would be kept open full-time during the Gulf war. Later the London Underground spokesman revised his statement, saying that closure outside peak hours was still under review because of the petition. The reason given for the possible closure is the shortage of staff and the loss of revenue from travel cheats if the entrance is left unmanned. LT claim this loss is "considerable", but RA Council member Bill Bailey has written to enquire the extent of the loss; as the entrance tends to be unmanned only during the off-peak hours.

PRGT

TONY MANDELSON MEMORIAL

Somewhere for mothers and toddlers to sit and chat whilst waiting for children to come out of the Hampstead Garden Suburb School, Tony would have liked the form that his memorial has finally taken.

Sited near the school on Willifield Green the Tony Mandelson Memorial is a hexagonal bench round a tree. It will be officially inaugurated on May 11 at 6.30 pm following which all will be welcome at an informal party in Fellowship House.

YOUTH CLUB NEWS

The Youth Club closed last year in the absence of a qualified leader and interested parents to join the current committee.

We are now looking at options for relaunching the club. To do this we aim to help some local people train for a part-time Youth Work qualification. We also need more adults and parents on the Management Committee. If you are at all interested, please contact Liz Tarn on 081-458 6100.

RA REPORT cont.

Christopher Kellerman of the New HGS Trust has confirmed to Council that there are no immediate plans for the North Square site. Did you know that the RA Council meets on the first Tuesday of every month (except August) in the Community Room at Bigwood House at 8 p.m.? Why not come, observe and possibly become involved in the future of your suburb?

RA REPORT

The most important event for the Residents Association at this time of the year is the **Annual General Meeting**. A great deal of care and preparation goes into presenting our accountability for the last year, including the printing and distribution of the **Annual Report**.

The **British Gas** undertaking, the **Traffic** survey, the **Nautilus** problem have all been our concern in these last months, and there are various articles in this edition with further information.

Much time and expertise was needed to read, digest and make constructive criticism on the **London Transport Consultative Document 1991/94**. Very little time was allowed and most of the work was undertaken by Alan Lawson and S. F. Bailey with the Traffic Committee. These matters have a considerable influence on the future of our conservation area, and the suburb is fortunate to have informal members of Council who can consider these problems on our behalf.

Strong support was given by the RA to the pressure on London Transport not to close the **Finchley Road entrance to Golders Green Station**, and the latest information is that it will remain open at peak hours.

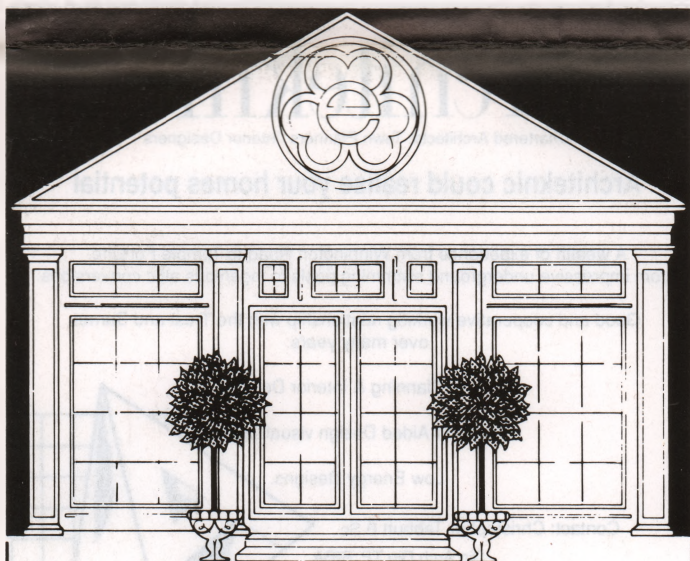
The Post Office Advisory Committee have asked us to monitor the new service at **Temple Fortune Post Office**, so perhaps constructive comments could be sent to the Hon. Sec. for our report to them?

The question of indiscriminate **spraying of weed-killer**, which resulted in hedges dying, has been taken up with the London Borough of Barnet. They have been co-operative in agreeing to suggestions for future safeguards.

The new **Honorary Life Membership Book** was on display at the AGM. The inscription reads: "Those whose names are inscribed here have given exceptional service over many years to the residents of HGS" – followed by the names for 1990 – John Enderby, MA; Brigid Grafton Green; Stuart Gray, FRIBA; Jean Henderson, BA (Lond.), Barrister, JP; Dr Edward Hoblyn, MBE, PhD; Christopher W. Ikin, TD, LLB. As announced at the AGM, Kitty Slack and Barbara Anderson have accepted nomination for 1991. We are grateful to Violet Luckham for her skill and artistry in carrying out the inscriptions.

A meeting with LLB on 24th January concerning **Wheeled Bins and Re-cycling** was encouraging, as suburb problems were fully discussed, and closer co-operation is obviously going to produce more helpful solutions. This is going to be urgently needed in the future with the many planned changes in service. Residents should monitor the service after August 1st.

A new **asphalt pathway** has been laid from Birbeck Court to Asmuns Place – another project that David Rapson helped to arrange.



MARK ENRIGHT
THE GARDEN SPECIALISTS

invite you to their
Garden Centre
at Temple Fortune
this spring for
quality plants and sundries,
helpful advice
and an extra bonus of
15% off
all trees and shrubs
on production of
this advertisement



788A Finchley Road, NW11
Tel: 01 209 1533

GARDEN DESIGN · CONSTRUCTION · MAINTENANCE

ENVIRONMENT WEEK, 1991

(Saturday, 11 May, to Sunday, 19 May, inclusive)

- Saturday, 11 May: FHA "Fete on the Square" (teas organised jointly between FHA and RA, in St. Jude's Church Rooms)
- " " Inauguration of the Tony Mandelson Memorial 6.30 p.m., Willifield Green followed by an informal party in Fellowship House – all welcome.
- Sunday, 12 May: Walk led by Michael Holton "The Old Suburb from the Ice-Age to the Present Day" Departing Henly's Corner, Brookside Walk, at 2.30 p.m.
- " " Teas and displays in the Tea-house, Northway, from 3 to 5 p.m.
- Saturday, 18 May: Entertainment by "Patchwork" 8.00 p.m. Fellowship House, Willifield Green
- Sunday, 19 May: Suburb "Clean Up" 10 a.m. Meet near Angela Buxton Tennis Centre, Northway Gardens
- " " Walk led by Chris Kellerman "The Suburb Town Trail" Departing Wylles Farm, Hampstead Way, at 2.30 p.m.
- " " Teas and displays in the Tea-house, Northway, from 3 to 5 p.m.