

INTERNATIONAL GRAND MASTER ATTENDS HGS CHESS OPEN DAY

Jonathan Levitt, who is an international Grand Master, attended the inaugural open day of the HGS Chess Club on 18th November at Fellowship House. This was the first of a planned series of events and was attended by about twenty chess players of ages ranging between 8 and 80 and varying standards.

It is hoped that if there is sufficient demand we will be able to request Jonathan, who lives in Hampstead Garden Suburb, to provide coaching and perhaps to play some simultaneous games with our members.

The afternoon was enjoyed by all participants, who were served refreshments.

The Chess Committee is making a determined effort to ensure the success of the Chess Club and the next open day is planned for Saturday, 17th February from 2.30 p.m. to 5 p.m. at Fellowship House, Willifield Way. Players of any age are welcome. Apart from an enjoyable afternoon, everybody will be given a free

set of the Chess Rules. Please bring your own chess set. For membership details, please contact the Committee who are:

Rosemary Goldstein,
Secretary (458 1123)
1a Church Mount, N2

Florence Chamberlain,
Fellowship House Contact
(455 1491)
145 Hampstead Way, NW11

Bridget Waller, Youth
Section (455 3845)
5 Creswick Walk, NW11

Mukarram Syed, Treasurer
and Adults Section
(458 1948) 5 Neville Drive N2

Membership is open to members of HGS Residents Association but you may join at the same time as join the Club. The charge for the Chess Club is £3.00 for adults and £1.50 for children up to 15 years. Further details are provided on the application and general information form, which can be obtained from the Committee.

BW



WINTER in Kitchfield Way

*Snow falls gently from the leaden sky,
To make a soft, white blanket,
On which crystals lay.*

*Where street lamps shed their orange glow,
In the early evenings,
When cruel winds blow.*

*As rooftops turn into icy peaks,
And trees are coated with snow,
When children throw snowballs
at one another,
Their cheeks all aglow.*

*Christmas is nearing,
And presents are bought,
With Christmas cheer,
That St. Nick has taught.*

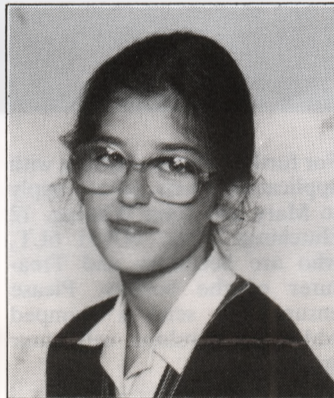
*Christmas trees laden with tinsel
and lights,
And little chocolate santas,
Over which children will fight.*

*As the sky becomes darker,
And the frost starts to bite,
Log fires are lit,
Ready for a cold winters night.*

Sara Berman

WORDSEARCH WINNER

Well done Emma Rodwell of Chatham Close who won the autumn Wordsearch competition on planets of the solar system! Emma is thirteen years old and in the third year of Henrietta Barnett School. She used to attend the Garden Suburb Junior School. She has lived in Hampstead Garden Suburb for ten years, having been born in Finchley. Emma's hobbies are photography, stamp collecting and she has a large collection of china animals. Her favourite sports are tennis, which she plays at Farm Walk Tennis Club, and football. She supports Liverpool and her ambition is to see Liverpool play on their home ground, Anfield. Emma loves music, she plays the flute and listens to Capital Radio. She also likes travelling, reading



and watching crime films on video. When she grows up, apart from travelling a lot, she'd like to study law or journalism. With her Book Token, she plans to buy a book on photography and some crime fiction.

EW

WORDSEARCH COMPETITION

TEST YOUR KNOWLEDGE OF THE SIGNS OF THE ZODIAC

Find and ring the names of ten of the twelve signs of the zodiac hidden in the box of letters. They may read forwards, backwards, up, down and diagonally.

```

A W X Z T S F O N M G F E D A X
Y B V S U I R A T T I G A S Y E
A A C U E H A P G L H I Q Z I A
R J E D O U I Q R H K J U C O B
B K M J R E C N A C I U A V U S
I L N O P A E F S T Y J R W X U
L R M Q E V G U E D Z A I U I R
J P L I I H I O W V C E U K O U
K O K R G I F E D B C B S A L A
L N G O U J Y X A Z T S R M U T
M O S J I N R O C I R P A C B A
S T V E H K G P Q R U N G C S D
A N M S C L N O H T O V W E E F
O E T A H S M G S G E M I N I E
I U G Y S T I R P B C R F C D B
V W H J B C Q P C B A D F E D C
    
```

If you are under fifteen on the 5th of March, you may list the answers on a postcard with your name, age, address and telephone number and post to: 35 Wildwood Road. The first correct entry drawn on the closing date 5th March 1990, will receive a £10 Book Token. To help you on your way, we have given you the first answer.

Happy Hunting!

EW

NEW CHAIRMAN FOR HENRIETTA BARNETT PTA

The Parent Teacher Association of Henrietta Barnett School has a new chairman and treasurer following a period during which a working party under Governor, Mr Calman has been looking into a revised constitution for the PTA.

After a vote taken at a reconvened AGM on 17th October Jean Dyson, Chairman of the Governors, announced that Mike Wilson of Hampstead Way and Grant Kriteman of Southway were elected chairman and treasurer respectively.

A vote of thanks was proposed by Mr Hirjee to Harold Posner for his past work as treasurer. Both he and Leslie Marjoribanks were proposed and seconded as honorary life members.

The new chairman, Mike Wilson, putting forward a 4 point plan has said that his committee "will establish with the headmistress and her staff an expenditure plan for the year covering items for our daughters' benefit which cannot be funded by other means.

"We will then construct a fund raising plan for year group and school wide events. However, it is clear that these are

unlikely to raise sufficient funds. We are therefore planning a system of giving whereby all parents will be asked to make a small donation each term.

"We believe that parents should know how their money has been spent and will keep them informed".

He is anxious also that parents should be more involved with the PTA and know who committee members are. A series of calendars and newsletters are planned together with details of fund raising and expenditure.

RW

INSTITUTE NEWS

Intensive Easter programme

The lateness of Easter this year has enabled the Institute to introduce a much wider range of intensive daytime courses than is usually possible in the period between the end of the Spring Term and the bank holiday weekend. In the past the intensive course programme has tended to be restricted to a small number of Arts and Crafts subjects, but between 27th March and 6th April 1990 there are 16 courses on offer.

Arts and Crafts are still well represented, with History of Art; Jewellery; Advanced Sculpture; English Country Houses of the 18th century; Life Drawing; Marbling; Graining & Decorative Finishes; and Picture Framing & Mounting. In addition, however there are courses in French, German and Spanish designed for those with an elementary grounding in the language, who wish to raise their level of competence in reading, writing, listening and speaking. Student numbers will be restricted to 10 to maximise individual attention. Cake and Gateaux Decoration; First Aid - St. John Certificate; Fresh Start for Women; Poetry for Everyone; and Stress Management in Everyday Life are the courses making up the

rest of the programme. Stress Management takes place over a weekend, to allow those with demanding Monday-Friday jobs to participate in a subject which may be of particular relevance to them, although the course also acknowledges and aims to help with the pressures which exist in other situations, such as looking after a home and family. All the other courses take place on weekdays, varying in length between 12 and 20 hours spread over 3 to 5 days.

One of the main attractions of intensive courses is the chance to devote one's concentration to a subject for a relatively short period, to the exclusion of the kind of distractions which can intervene when one is attending a two-hour class once a week throughout an academic year. Those who have attended intensive courses are often keen to repeat the experience.

The Institute will be publishing a special leaflet containing detailed information about the courses very shortly. It will be available from the Institute in Central Square, NW11 (telephone 455 9951), and from local libraries. Enrolments for the courses are already being taken.

CENTRAL HOTEL

TEL: 458 5636

PRIVATE BATHROOMS
AND PARKING

35 HOOP LANE, GOLDERS GREEN,
LONDON NW11

PROPS: MR & MRS E. TANNER

Interior Design
&
Refurbishment
Consultants

atmosphere

01-455 0794