

FINCHLEYS COUNTRYSIDE

by Oliver Natelson (price £1.80)

This is a splendid booklet which, as its subtitle states, gives "a glimpse into its past and threats to its future". It deals in detail with the history of the Glebelands, which was a part of the vast Finchley Common, and shows how the old tracks and paths have become the roads of today, which are documented on the maps that are included. Glebelands also contains ancient woodland and hedges that are centuries old and a home for many species of birds and small animals.

Closer to the Suburb, the area of Brookside Walk is of even greater historical interest. Hedges can be dated with reasonable accuracy according to the number of woody species they contain. Three at least of the Brookside Walk hedges are between six and ten centuries old; their age is confirmed by the presence of Dogwood, Field Maple, Hazel, Midland Hawthorn and Blackthorn and by their curved shape. Brookside Walk also contains rare plant species, one of which, the Hybrid Knotweed, is unknown elsewhere in this part of London.

Dr Natelson put these facts forward to the Inspector at the Henly's Corner Inquiry. The London Borough of Barnet support the Department of Transport's proposal for the widening of the North Circular Road in Finchley, and their own figures show that one thousand trees of many species, together with our ancient hedges and woodland, would be destroyed for ever in this widening at Henly's Corner.

Residents interested in our historic woodlands and wildlife may like to know that Dr Natelson is conducting a walking tour of the areas on 29th April, starting at 2 p.m. at the corner of High Road and Summers Lane, N12, and at 4 p.m. at the Henly's Corner garage.

Residents may know of areas of ancient woodland and hedges on the Suburb (apart from Big Wood and Little Wood) - perhaps on the east side of Corringham Road, for instance? If so, please write with details to Dr Oliver Natelson, 17 Hollickwood Avenue, Finchley, N12 0LS, because he admits he has not yet explored or studied our Suburb habitats and would be delighted to hear about them.

It is hoped that this booklet will be on sale at bookshops and newsagents in Temple Fortune. At present, only Hatchard's bookshop just past Tally Ho corner stocks it regularly.

We also expect that copies will be available at our Environment Week events and in the Tea House. **CJR**

The Post Office at Lyttleton Road

6 Lyttleton Road, London N2 0ET will be converted to agency status from Friday 23rd March, 1990.

The office will continue to offer a full range of services and will now be open 9-5.30 Monday to Friday (now open lunchtime and Thursday afternoons) 9-12.30 Saturdays.

GURNEY DRIVE IN SPRING

Spring in Gurney Drive,

Is when all the flowers come alive,

Trees with blossoms flourishing,

Play a part in Gurney Drive's Spring,

Lots of birds come out to sing,

You soon find yourself whistling,

Buzzing bees may hum and dance,

While getting nectar from the plants,

People are seeing to gardens and seeds,

Whilst others you find are killing their weeds,

Clear blue sky with splotches of white,

You may see a sparrow or starling in flight,

Gurney Drive is a nice place to be,

Especially in Spring, do come and see!



D. B. Woder

WORDSEARCH COMPETITION

Congratulations to Claire Braham of Ossulton Way who won the winter Wordsearch competition on Signs of the Zodiac. Claire is fourteen years old and is in the third year of Henrietta Barnett School. Like her mother, Claire is born and bred in Hampstead Garden Suburb and went to Brookland Primary School. Claire's interests are musical and artistic. At the moment she is preparing for the North London Music Festival in May. She loves music and in addition to playing the piano to grade seven, she plays the flute and listens to Capital Radio. Claire likes photography, creating cards of her own design, flower-arranging and cookery. She is also dedicated to her cat, Fluffy, and her

two budgerigars. Claire enjoys biology and chemistry at school and intends to study medicine. In addition, her long term goal is to travel around the world. With her £10 book token, Claire hopes to buy "The Human Body" by Jonathan Miller. **EGW**



WORDSEARCH COMPETITION

TEST YOUR KNOWLEDGE OF LANGUAGES OF THE WORLD

Find and ring the names of twelve of the languages of the modern world hidden in the box of letters. They may read forwards, backwards, up, down and diagonally.

S P R A A Y X B T C S J D H H E
O B C H I N E S E T K R I G C F
T Q Z I B Y Z A U N R L Q M T N
N H C N E R F V U S G M N O U O
U C D D C X W W V R L L Q P D P
M L E I F K J I U K Y X I W T B
V A N G D I H S J E Z A D S C U
Z W A H E F S G F R Q B S G H V
A Y I X L I K G J S U R D E W E
R A L M A N H I O P Q E C R E X
A E A N E Y U W U P F I T M V A
B A T I F Z E O O H S I N A P S
I J I O B R C N G O I D D N C B
C K I U B G M H N E G J Q R W H
F D L E H L I M Z O Y P X S T V
I C H B K J A E S E N A P A J U

If you are under fifteen on the 5th of June, you may list the answers on a postcard with your name, age, address and telephone number and post to: 35 Wildwood Road. The first correct entry drawn on the closing date 5th June 1990, will receive a £10 Book Token. To help you on your way, we have given you the first answer.

Happy Hunting!

EGW

PAVILION CHILDREN'S CENTRE

On 13th February 1990 the Pavilion Children's Centre celebrated its first "Back to Our Old Premises" anniversary. Last year, at that time, we re-occupied a refurbished Pavilion after a long, hard, negotiation with the Borough of Barnet. The Centre would like to thank the Hampstead Garden Suburb Residents Association, in particular our liaison with them, Liz Tarn, for all their past and continuing support.

Since then, the Centre has blossomed. Every morning we have two 0-3 Playgroup Sessions. While mums and nannies enjoy a relaxing chat, children are busy playing with a variety of toys and books, playdough, painting, sticking, printing or perhaps even jumping on the trampoline. When weather permits, sand and water play are provided on our safe, enclosed balcony. All this is capably supervised by our playleader, Gill. During term time, we offer afternoon Music and Art Courses taught by qualified instructors. Separate classes cater for Toddlers and 3-5s. We are even available for birthday parties on Friday afternoons.

In March, our new committee began plans for our annual summer fête - this year on Sunday 20th May. As we do not receive any outside financial assistance and are not aided by the Borough of Barnet, this is our major fundraiser that enables our Centre to thrive. Last year's fête was a grand success with donkey rides, band music, mini-roundabout, jumping castle, barbeque, cakes, Tombola and jumble - just to mention a few. We have decided to expand by offering stalls for rent and more activities. So this year should be even better. Anyone wishing to

enquire about the stalls or about being part of the fête in some other way is encouraged to contact Lisa Aharon, 455 4101.

The Pavilion Children's Centre strives to be functioning year-round, and except for a few closures for holidays, we mostly achieve this. We are a registered charity, a non-profit-making organisation, and are run by volunteer mothers, nannies and an occasional dad. Our atmosphere is friendly and relaxed. New parents and children rapidly feel at home. During holidays, well-behaved older children are welcomed. We are committed to safe, fun, educational play in a well-maintained quality environment.

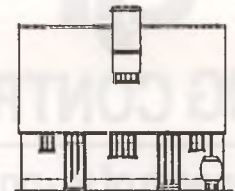
Come and try us out. We hope to see you soon! **LA**

Garden Suburb School Fete Saturday 23rd June sees the PTA fête in the playground of Childs Way.

Lunches from 12.30 and all the popular stalls, plants, bric-à-brac, cakes, handicrafts, books, etc. Two exciting tombolas and a chance to win a colour television in the raffle.

Each class will be running a fun sideshow.

Items for the stalls will be welcomed by Rosemary Gaskell-Taylor, 458 9777.



THE TRADITIONAL WINDOW AND DOOR COMPANY LTD

A total service of professional design advice, accurate manufacture and the sensitive installation of replica windows and doors in Georgian, Victorian and Edwardian buildings.

109d Regents Park Road
Primrose Hill
London NW1 8UR Tel: 081 722 7220

ANNOUNCING THE SUBURB'S NEWEST HEATING AND PLUMBING SHOP!

G.D. Wildman (Est. 1969), experts in all your heating and plumbing needs, are happy to announce the opening of their first domestic kitchen and bathroom design and advisory centre.

Whether you need a U-bend, Jacuzzi or totally new look for your kitchen or bathroom, call us on

(081) 209 0488

or drop in at 7 Finchley Road NW11
(Next to Uncle Ian's!)

We have been serving the trade for years - now we'll be happy to serve you!



TRAVEL CENTRE HAMPSTEAD GARDEN SUBURB

Our experienced staff will help with all travel arrangements.

**8 MARKET PLACE,
NW11
01-209 0444**



barnet
EDUCATIONAL SERVICES

MEALTIME SUPERVISORS

Opportunities in Local Schools

If you have an hour or two to spare to supervise children at lunchtimes, then we have vacancies in a school near you.

Garden Suburb Junior
Golders Green. Tel: 01-455 3269.

You can work on a regular or casual basis to suit yourself, however for regular staff we can offer a half-pay retainer for school holidays plus annual leave payments.

Rate of pay is approx. £3.58 ph with free meal on completion of duty.

AN AUTHORITY COMMITTED TO EQUAL OPPORTUNITIES

