

# TONY MANDELSON MEMORIAL PARTY



Dorothy White and Diana Mansell



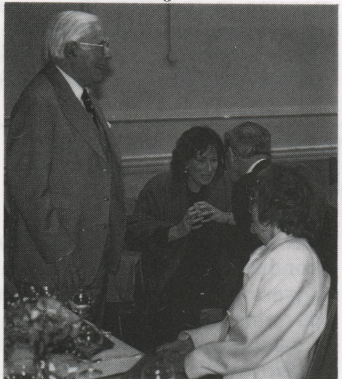
Sally Murrell and Alan Lawson



Peter and Rosie Loyd get down to some serious eating



Anne and Terry Rand



Lord and Lady Soper and Judy Jenkins



Theodora Bodger

The party to celebrate the life of Tony Mandelson was just such a one as would have been enjoyed by none better than Tony himself.

About 150 friends joined with Mary Mandelson and their son Peter for what was a poignant but joyous Suburb occasion.

Led by Gerry Mansell, who had known Tony since their days together in the Western Desert, others joined him on the platform to pay tribute.

William Frankel, Managing Director of the Jewish Chronicle where Tony had been the advertisement director, gave an affectionate view of his working life.

Ted Hoblyn reviewed Tony's work and achievements as an RA Council member since 1965 and as Chairman for four years. He paid tribute to the support always given by Mary Mandelson and said "tonight let us not mourn. Rather let us say thank you for Tony; let us celebrate our good fortune in having had so much of his wonderful life, energy and unflagging enthusiasm devoted

to our affairs".

Lord Soper in a moving address said that he "came to honour and respect Tony as warm, affectionate, astute and, above all, a citizen. The Suburb was Tony's parish in which he exercised a ministry, like Dubcek he practised

socialism with a human face".

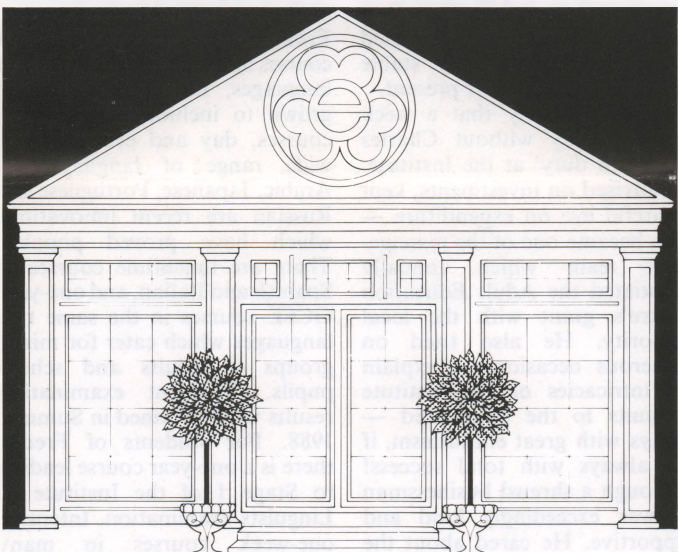
"We should cherish the memory of a good man, an able man. We are more civilised having had the pleasure of his acquaintance and assurance of his company."

A Tony Mandelson memorial fund has been set up to

perpetuate his memory in a manner to be decided. If you have not yet made a contribution it can be sent to the RA Treasurer, John Boulter, at 62 Corringham Road NW11. Cheques should be made payable to "Tony Mandelson Memorial Fund".



Mary Mandelson, Lord and Lady Soper and Peter Mandelson



MARK ENRIGHT  
THE GARDEN SPECIALISTS

invite you to their  
Garden Centre  
at Temple Fortune  
this spring for  
quality plants and sundries,  
helpful advice  
and an extra bonus of

**15% off**

all trees and shrubs  
on production of  
this advertisement



788A Finchley Road, NW11  
Tel: 01 209 1533

GARDEN DESIGN · CONSTRUCTION · MAINTENANCE



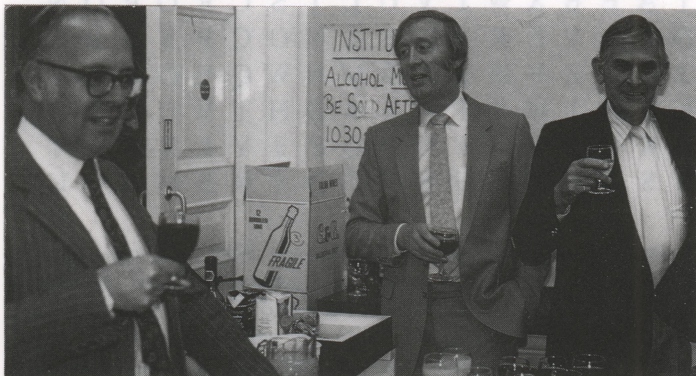
Lord Soper, Ted Hoblyn, William Frankel, Gerry Mansell



Sir Philip Woodfield, Ted Hoblyn and Ruby Jobson



Peter Mandelson, Mary Mandelson, Eileen Whelan



John Boulter, Ken Murrell and James Webster

W.M.  
GLENDINNING  
LTD

BUILDERS AND DECORATORS

FOUNDED IN LONDON IN 1904  
SIXTY FIVE YEARS BUILDING ON  
HAMPSTEAD GARDEN SUBURB

STATION HOUSE,  
915 FINCHLEY ROAD,  
NW11 7PE.

Telephone:  
01-458 4422

OFFICES AND WORKS:  
70 GRANVILLE ROAD,  
NW2 2LA.