

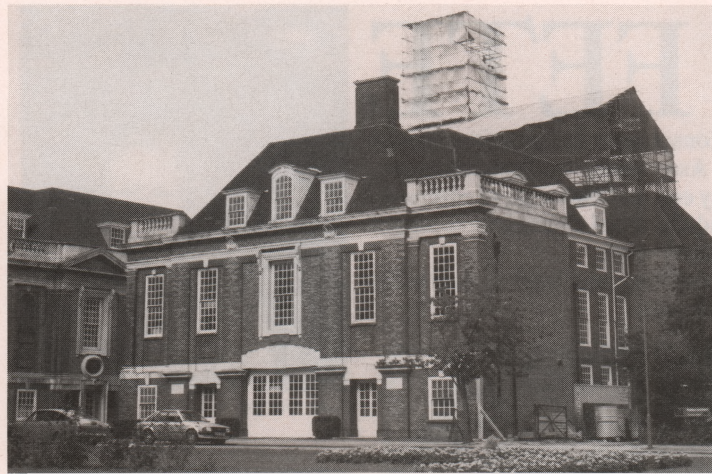
MASTER OF MUSIC

St. Jude's has at last been able to make an appointment of an Organist and Choir Master, in succession to Peter Lea-Cox who left in November last year. He is Mr Simon Dunbavand, who took up the appointment on 23rd August.

Simon is still young, but already has wide experience. He was Organ Scholar at Peterhouse, Cambridge, until June this year, when he took his BA in Music. His dissertation was on Carl Nielsen, which could be thought appropriate for one who speaks Danish and has taught in Denmark. He also holds the ARCO and ARCM diplomas. He has played

the organ at concerts throughout England and in Scandinavia, has appeared on BBC, TV and ITV, and has directed choirs in his home parish in Cheshire, at Chester Cathedral, and at university.

He now works in a bank in Finchley, and hopes to come and live in the Suburb when he can find a suitable place. (Any offers?)



RAISING THE ROOF AT THE INSTITUTE

Swathed in over 60 tons of protective scaffolding, the central wing of the Henrietta Barnett School at Hampstead Garden Suburb, North London, is now being re-roofed.

The grade two listed building was designed by Sir Edwin Lutyens in 1911 as The Hampstead Garden Suburb Institute. The provision of the new roof and reconstruction of the building's beautiful oak clock tower form part of a £2.5 million restoration and refurbishment programme under the supervision of architects Rock Townsend on the instructions of the Council of the Hampstead Garden Suburb Institute — an independent registered charity.

Focal point of Lutyens' design for the Suburb's Central Square, the Institute is now shared by an adult education centre and the girls' grammar school. The adult educa-

tion activities include a major English as a Foreign Language (EFL) Department currently serving about 1,000 students.

Because the building includes a school, a major part of the funding of the work is provided by the Department of Education and Science. A limited proportion is contributed by the local education authority, the London Borough of Barnet. The amount of funding that has to be provided by The Institute is estimated at £550,000; £250,000 has already been raised by donation and covenant.

Parents of children at the Henrietta Barnett School and old girls have been particularly generous in contributing to the appeal. It is now hoped that local residents and national bodies who have an interest in the maintenance of this fine Lutyens building and its amenities will be encouraged by the immediate results and contribute towards the building fund.

NEIGHBOURHOOD WATCH

The growth in the number of Neighbourhood Watch Schemes nationally — from one scheme in 1982 to over 35,000 — is one of the most important developments in community crime prevention in this country. This growth has been mirrored in the Golders Green area generally with over 80 schemes, and certainly on the Suburb where the number of Watches has grown from one to 23 over the last two years — now covering some two-thirds of the Suburb.

The RA has supported Neighbourhood Watch from its inception and is delighted at this growth which it wants to encourage until the whole Suburb is covered.

As well as reducing crime and the fear of crime, the RA believes Neighbourhood Watch can also do much to foster and keep alive the vision of community spirit foreseen by Henrietta Barnett with neighbours getting together to look out for each other's houses and with a shared optimism that crime can be tackled effectively. It is for this reason that we are now arranging a regular 'slot' for Neighbourhood Watch in this, and subsequent issues of, Suburb News.

Working with the Police, we are developing a number of ideas which we will be telling you about in future issues, together with general information about crime on the Suburb and what you can do to help combat it. We hope that Watch Co-ordinators and others who are actively



involved in running Watches will contribute information and ideas generally for this column. However, we are not setting up in competition to the newsletters and other means of communication within Watches which, of course, must continue to be encouraged and given every support.

As the Home Secretary, Douglas Hurd, has said: 'The Police need the wholehearted support of the community in the fight against crime, and through Neighbourhood Watch we can all play a part'. The RA will do all it can to promote Neighbourhood Watch on the Suburb to this end.

NEWS FLASH

The confidence trickster who called on new arrivals, alleging he was from the 'Hampstead Garden Suburb Trust Association' and asking for money, will not be seen again for the time being. He was arrested in August! PL

HUGH LLOYD Chemists

(Stephen Simbler Ltd)

Specialists in High Class Cosmetics and Baby Goods

FOR FRIENDLY SERVICE

34 MARKET PLACE, HAMPSTEAD GARDEN SUBURB, LONDON NW11 6JJ

TELEPHONE: 01-455 9090/8227

12, MARKET PLACE
FALLODEN WAY
LONDON NW11 6GJ

Look New

DRY CLEANERS

For fast collection and delivery
TEL: 01-455 2207

HAMPSTEAD GARDEN SUBURB
ESTABLISHED 20 YEARS

HIGHEST QUALITY DRY CLEANING AT REASONABLE PRICES WITH CAREFUL, PERSONAL AND EXPERT ATTENTION

| HERS: | HOFFMAN PRESS | HAND PRESS | TAILORING SERVICE | |
|---------------------------|---------------|------------|------------------------------|------------|
| DRESSES | 2.60 | 4.00 | ZIP — TROUSERS | FROM £4.10 |
| SKIRTS | 1.85 | 2.50 | ZIP — SKIRT | FROM £4.10 |
| KILTS | 3.25 | 4.25 | HEM — TROUSERS | FROM £4.10 |
| BLOUSES (Silk) | 3.10 | 4.00 | HEM — SKIRT (plain) | FROM £4.10 |
| BLOUSES (Cotton) | 2.35 | 3.00 | TAPERING TROUSERS | FROM £6.00 |
| TROUSERS | 1.85 | 2.50 | NARROWING LAPELS | FROM £9.00 |
| | | | COBBLER SERVICE | |
| SUITS (2-piece) | 4.30 | 6.30 | SOLES — Leather | FROM £8.25 |
| SUITS (3-piece) | 5.30 | 7.30 | SOLES — Stick on | FROM £4.25 |
| TROUSERS | 1.85 | 2.50 | HEELS — Rubber (Ladies) | FROM £2.50 |
| JACKETS | 2.45 | 3.80 | HEELS — Rubber (Gents) | FROM £2.50 |
| COATS | 3.25 | 4.50 | HOUSEHOLD | |
| RAINCOATS (incl. Reproof) | 4.50 | 5.90 | CURTAINS (Lined) per sq. yd. | £2.00 |
| JUMPERS | 1.45 | 1.95 | BLANKETS (Single) | £2.30 |
| JUMPERS (Heavy) | 1.85 | 2.50 | BLANKETS (Double) | £3.35 |

CURTAINS TAKEN DOWN AND RE-HUNG COLLECTION & DELIVERY FREE OF CHARGE • ACCOUNTS WELCOME

CHESTERTONS PRUDENTIAL

Are delighted to announce the opening of their new office in Hampstead, for an unrivaled and professional service on the sale or letting of your property. Linked to 22 Central London offices.

9 Heath Street, Hampstead Village, NW3 6TP

01-794 1125



Your home may be a nice place to live in, but it's no place to keep your valuables.

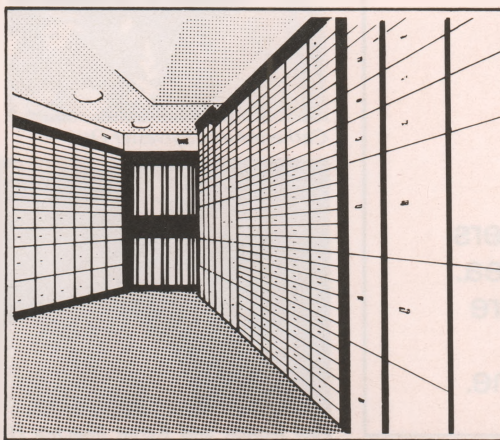
Where is the safest place to keep your valuables?

On a rating of 10, High Street banks get 5. (You can just imagine the rating your house would get.)

Fort Knox gets the maximum rating of 10.

The Hampstead Safe Depository gets 9, just one point below.

But being open every single day of the year, with opening times to suit virtually everyone, you could say that we have better access than Fort Knox. And we're a lot closer.



What's more, once you rent a safe deposit box, which can cost as little as £80 a year plus VAT, you're assured free and unlimited access to your valuables which you can examine in one of our two viewing rooms in complete privacy.

You can also count on complete discretion as all dealings are in strict confidence. And if you wish you can retain anonymity.

Deposit boxes are also available for short lets which can make your holiday worry free. And don't forget that every box carries free insurance.

If you'd like to know more about the safest place to keep your valuables, call us on 01 431 2001.

Opening Hours: Mon — Sat 7.30 am — 9 pm

Sun & Bank Holidays 10 am — 6 pm



HAMPSTEAD SAFE DEPOSITORY

There's no safer place.

575 Finchley Road London NW3 7BJ Tel: 01 431 2001