

BROOKLANDS FAIR

Brooklands Infant School happened on one of the Summer's sunny days for their Fair and raised £3,000 for equipment for each classroom and the creation of a pool for environmental studies.



Diane Lewis, deputy head and Sheila Abbott, head, getting into the spirit.



Rachael and Joshua Filer try to kill the rat.



Joanna Carter.



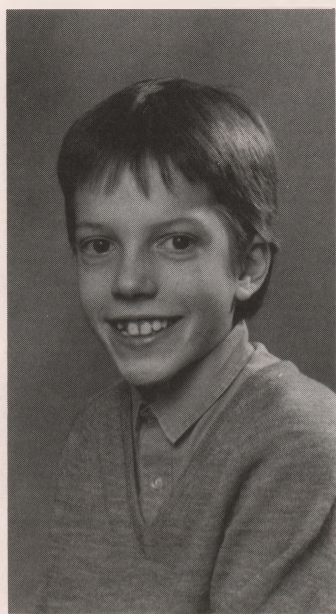
The 'little' big dipper.



Anna Gorman as Miss Lewis wins the fancy dress.

WORDSEARCH WINNER

SUMMER '87 WORDSEARCH



Well done, Jonathan Frost, age 11, winner of the Summer Wordsearch Competition. Jonathan of Erskine Hill was encouraged by his grandmother and it was the first competition he had ever entered. Born in Hampstead Garden Suburb, Jonathan attended the Garden Suburb School until this term, when he joined his sister at Headon School. His main interests include football (he supports Liverpool), cricket (he supports Kent), and scouts. He is a member of the 8th Golders Green Scouts and this summer enjoyed his first week at scout camp. Jonathan would like his career to be in professional cricket. He plans to buy two thrillers with his £5 Book Token.

EW

WORZEL GUMMIDGE

The variable weather did not deter the Hampstead Garden Suburb Dramatic Society! Director, Linda Seff, Stage Manager, Tom Albu, actors and stage hands, all were determined that the show must go on. Between them they produced a lively entertainment which gave a great deal of pleasure to young and old alike.

In a story where scarecrows and a wooden doll come to life and create chaos amongst adults, but are befriended by two children, there is already an atmosphere of magic. This was communicated to the audience and enhanced by a simple, but effective, set, excellent make-up and colourful costumes.

The wooden doll, Aunt Sally, with her la-di-da airs and graces was beautifully portrayed by Judith Gubbay, and was complemented perfectly by the awkward, well-meaning Worzel, played by Martin Clarkson, who won the audience's hearts while he strove to win Aunt Sally's. Danielle Barrington gave a very convincing performance as Sue and was well supported by Andrew Kirby as John. Sergeant Beetroot (Michael Ash), Soggy Boggart (Ben Mears) and the delightful Scabby Taterblight (James Cooper) handled their slapstick rescue of Aunt Sally with great skill.

It was indeed a very jolly affair and everyone in the large cast made the most of their character's individual personalities and eccentricities. All are to be congratulated on their projection — every word was audible, not an easy thing to do in Little Wood these days. LS



Autumn in Middleway

Through the morning mist
The sun glimmered;
On cherry trees, the red leaves shone,
Their berries squashed under foot,
The birds sang in the branches,
Spiders' webs sparkled in the morning light.

Squirrels scampered across the road,
Leaves fluttered down,
Crimson, gold and brown.
Behind Bigwood House the sun set early,
Brick houses glowed,
In the evening light of Middleway.

Rachel Orme.

WORDSEARCH COMPETITION

TEST YOUR KNOWLEDGE OF THE CAPITALS OF EUROPE

Find and ring the names of fifteen capitals hidden in the box of letters. They may read forwards, backwards, up, down and diagonally.

S	O	N	I	L	B	U	D	A	A	D	B	E	C	D	O	B	Y
U	B	S	W	X	Y	A	D	F	B	U	E	T	B	E	S	A	Q
V	E	T	G	B	Z	C	E	C	V	C	R	O	S	M	C	F	R
O	L	H	M	A	D	R	I	D	W	X	N	E	F	A	P	G	B
P	G	L	Q	M	N	B	K	C	P	N	Y	D	N	T	O	N	R
I	R	J	K	L	A	M	N	N	O	Z	H	Z	E	H	G	O	U
K	A	B	F	Z	E	D	I	A	Q	I	Y	L	M	E	F	H	S
J	D	A	Y	G	H	S	S	R	J	X	K	Q	P	N	I	G	S
X	E	X	V	U	T	M	L	O	H	K	C	O	T	S	H	S	E
W	W	G	H	I	J	K	E	V	W	J	S	I	N	I	A	T	L
S	I	R	A	P	L	U	H	R	Q	L	J	H	J	R	U	Z	S
F	V	Q	R	M	T	S	O	P	O	K	I	K	G	V	E	Y	A
E	P	U	N	S	O	T	U	V	W	L	L	S	W	F	B	B	X
D	E	C	T	B	Y	P	X	N	Z	M	M	X	B	E	D	C	W
L	M	R	M	S	N	O	A	Q	N	R	Y	S	T	O	A	V	I
C	O	P	E	N	H	A	G	E	N	Z	U	A	B	C	N	D	E
K	R	J	I	H	O	R	O	G	A	F	V	I	E	N	N	A	F
A	Q	P	O	B	N	P	Q	C	M	D	L	E	K	E	J	H	G

If you are under fourteen on the 1st December this year, you may list the answers on a postcard with your name, age, address and telephone number and post to: 35 Wildwood Road. The first correct entry drawn on the closing date, 1.12.87, will receive a £5 Book Token.

To help you on your way, we have given you the first answer. Happy Hunting!

EW

ensmles

Whichever way you look at it we are the

HAMPSTEAD GARDEN SUBURB SPECIALISTS

Selling a flat or a maisonette

Ring us now! 458 8814

OPEN SEVEN DAYS A WEEK

20 Market Place, NW11

CENTRAL HOTEL

TEL: 458 5636

PRIVATE BATHROOMS AND PARKING

35 HOOP LANE, GOLDERS GREEN, LONDON NW11

PROPS: MR & MRS E. TANNER

Demand for good quality homes to rent in the Suburb continues to grow.

Excellent prices can be obtained through us with first class overseas company, diplomatic and academic tenants always available for

Pretty cottages, magnificent mansions and anything in-between.

Every aspect of rentals can be handled by us, legal and taxation advice, rent collection, management — or, if you prefer, we can just introduce a tenant.

No question is too trivial — if you are only *thinking* of letting and want preliminary advice, please phone.

Don't delay, phone today and **DEPEND** on us, like hundreds of Landlords throughout London!

BIRCH & CO

ESTATE AGENTS
VALUERS & SURVEYORS

18-21 JERMYN STREET
LONDON SW1Y 6HP

Telephone: 01-734 7432

01-437 5921 (7 lines) 01-734 0620 (3 lines)
(24 hour answerphone)

Telex: 268312 Wescom G Attn. Birchco
Fax No. London (01) 734 0670