

YOUNG FLOWER POWER

Despite the poor spring there was no drop in the quality or quantity of entries for the HGSHS show on June 27. Pictured here are some of the enthusiastic junior members.



Critical appraisal



The winning Fermonts



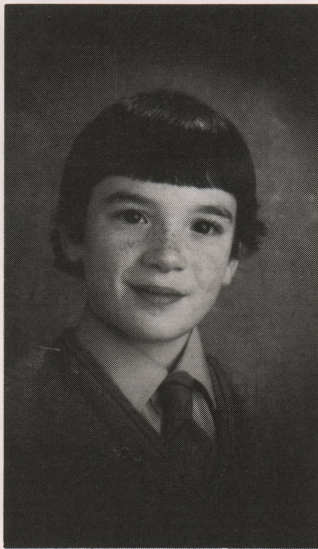
Young winners.



Time for prizes.

WORDSEARCH WINNER

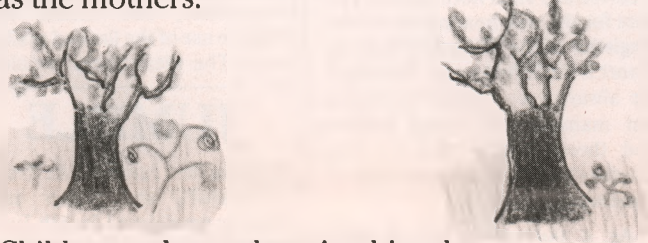
SPRING '87 WORDSEARCH



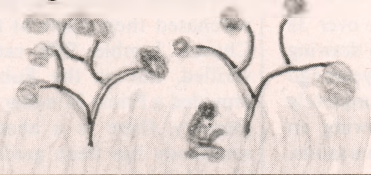
Congratulations to Ben Jacobs who correctly completed the Spring Wordsearch Competition. The task was made more difficult by two printing errors, but he succeeded with some hard work and a little help from younger brother Alex. Ben, age 11, has lived most of his life in Constable Close. He is a pupil of the Hall School and will go on to St. Paul's School in two years time. Ben's interests include reading, piano, violin, cats, tennis, skiing and swimming. He also loves cross-country running and is in training for the Sunday Times Fun-Run in Hyde Park in September. Ben hopes to be a solicitor when he grows up as Ben mainly reads detective stories, he plans to buy two books by Agatha Christie with his £5 Book Token. EW

SUMMER IN LINNELL CLOSE

The sun shone down on the glistening green
The close was like a painted scene
The blossom bloomed in bright gay colours
While the flowers and plants looked as pretty
as the mothers.



Children rode on gleaming bicycles
A little boy rode on a tricycle
Some girls were playing on the green
running races in a team.



A. Parlons

WORDSEARCH COMPETITION

TEST YOUR KNOWLEDGE OF LONDON UNDERGROUND STATIONS

Find and ring the names of fifteen stations hidden in the box of letters. They may read forwards, backwards, up, down and diagonally.

A	H	O	L	L	A	N	D	P	A	R	K	B	R	S	S	T	V
S	N	S	O	X	R	O	P	Q	H	Z	C	A	T	V	H	K	K
L	M	L	P	K	N	J	M	I	G	Y	B	D	U	I	W	U	I
O	R	Q	W	Z	Y	X	L	A	F	A	E	A	G	Y	X	H	L
A	B	A	V	E	A	U	W	K	K	F	E	H	B	C	Y	W	B
N	C	E	D	G	W	A	R	E	B	C	G	Z	E	O	R	D	U
E	E	T	U	D	F	V	R	J	I	A	E	P	D	Q	B	Z	R
S	U	I	H	S	G	S	U	H	T	M	I	L	E	E	N	D	N
Q	J	K	P	Q	T	Q	T	E	G	D	F	O	B	D	W	D	V
U	U	L	O	R	R	O	S	G	H	I	O	A	V	U	T	A	S
A	M	E	E	N	L	K	N	J	M	A	N	B	Z	Q	W	E	M
R	X	E	E	S	R	A	M	E	R	S	H	A	M	P	N	T	O
E	T	Z	Q	N	L	G	M	C	O	E	I	E	K	S	D	S	A
L	K	U	T	P	S	N	H	O	P	U	R	U	S	X	N	P	C
Y	V	M	K	O	K	W	F	E	I	T	O	A	M	U	Z	M	K
A	X	N	N	C	A	E	A	J	H	B	A	R	B	I	C	A	N
E	A	W	B	Y	B	D	S	Y	R	Q	W	Q	E	A	E	H	A
B	P	Q	R	D	U	P	N	O	D	E	L	B	M	I	W	L	E

If you are under fourteen on the 1st September this year, you may list the answers on a post card with your name, age, address and telephone number and post to: 35 Wildwood Road. The first correct entry drawn on the closing date, 1.9.87, will receive a £5 Book Token.

To help you on your way, we have given you the first answer. Happy Hunting! EW

PAVILION CC FESTIVAL

The Children's Centre Festival drew large crowds on the first warm weekend of the year! Opened by the Mayor, the Festival was voted a large success.



Liz Tarn.



Stephanie who was christened in St Jude's in the morning.



Demand for good quality homes to rent in the Suburb continues to grow.

Excellent prices can be obtained through us with first class overseas company, diplomatic and academic tenants always available for

Pretty cottages, magnificent mansions and anything in-between.

Every aspect of rentals can be handled by us, legal and taxation advice, rent collection, management — or, if you prefer, we can just introduce a tenant.

No question is too trivial — if you are only *thinking* of letting and want preliminary advice, please phone.

Don't delay, phone today and **DEPEND** on us, like hundreds of Landlords throughout London!

BIRCH & CO

ESTATE AGENTS
VALUERS & SURVEYORS

18-21 JERMYN STREET
LONDON SW1Y 6HP

Telephone: 01-734 7432

01-437 5921 (7 lines) 01-734 0620 (3 lines)
(24 hour answerphone)

Telex: 268312 Wescom G Attn. Birchco
Fax No. London (01) 734 0670

ensmles

Whichever way you look
at it we are the

**HAMPSTEAD GARDEN
SUBURB SPECIALISTS**

Selling a flat or a maisonette

Ring us now! 458 8814

OPEN SEVEN DAYS A WEEK
20 Market Place, NW11

**CENTRAL
HOTEL**

TEL: 458 5636

PRIVATE BATHROOMS
AND PARKING

35 HOOP LANE, GOLDERS GREEN,
LONDON NW11

PROPS: MR & MRS E. TANNER