

# THE FIGHT FOR FALLODEN WAY.

## Timetable of deception

The Ministry calls Fallodden Way a trunk road. And says it always has been. This is not so. It was the eastern end of Addison Way and its roadway was "acquired" by the Ministry at a dishonest public inquiry many years later. Though this was all proved by JAC, and admitted by the Ministry, at the 1969 Inquiry, the Department is still seeking, even today, to perpetuate this untruth.

### 17th August 1982

Letter from Transport Minister Lynda Chalker: "... no intention of widening Fallodden Way". "... no plans to do so".

### 8th November 1982

Letter from Lynda Chalker: "we have no present proposals to widen Fallodden Way. We are not working on such plans nor have we instructed our Consultants to do so."

### 27th July 1983

Official meeting of Suburb residents with Lynda Chalker: "I have no plans for widening Fallodden Way."

### 10th May 1984

In answer to a Parliamentary Question from the Rt Hon Peter Thomas MP, Lynda Chalker stated: "No plans exist for this section of road at present."

### 7th June 1984

Peter Thomas, who has been steadfast in supporting us, in *Hendon Times*: "No plans exist for this section of the road." "She (Lynda Chalker) doesn't intend that there should be."

### 28th June 1984

Five alternative schemes are announced for Fallodden Way. With their elaborate models, plans and displays, they are clearly the product of many months of work and planning, four of them involve widening.

In a careful exercise of deception, Ministry officials have misled our Member of Parliament, his constituents in the Suburb and the House of Commons itself.

### July 1984

The Ministry held a 5-day exhibition of their plans, not in the Suburb but in East Finchley.

### September 1984

Ministry eventually gave in to local pressure to mount the exhibition again in the Free Church Hall so that

residents could see it. They tried to set it up later in July but finally agreed a 2-day exhibition in September. It was noticeable that the Ministry's traffic experts disappeared whenever serious questions were asked and residents, generally, were left with the clear impression that Ministry officials were not being open with them and were refusing to supply information. The Ministry's case was that the bottle-neck, causing tailbacks, required alteration. In fact, tailbacks were rare; only noticeable after accidents or breakdowns.

### February 1985

Faced with a collapsing argument the Ministry rephased the Northway/Hill Rise traffic lights, reducing the main road green phase drastically. Extensive traffic tailbacks were the immediate result. The JAC complained that this was a totally artificial rephasing designed to support Ministry claims.

### December 1985

Traffic lights were progressively rephased back to the original timing. Result: no tailbacks. Fallodden Way is now virtually without congestion even at peak hours. Nevertheless an inquiry is announced.

## What now?

The Ministry has announced the venue for a Public Inquiry. The best they can come up with is the Methodist Church in East Finchley!

A pre-inquiry meeting will take place on February 20th. The inquiry itself will commence on March 11th at 10.00.

## What are we doing?

As a matter of urgency the Fighting Fund Committee is briefing professional witnesses, an expert traffic consultant, environmental and planning consultants and a barrister to present our case at the inquiry.

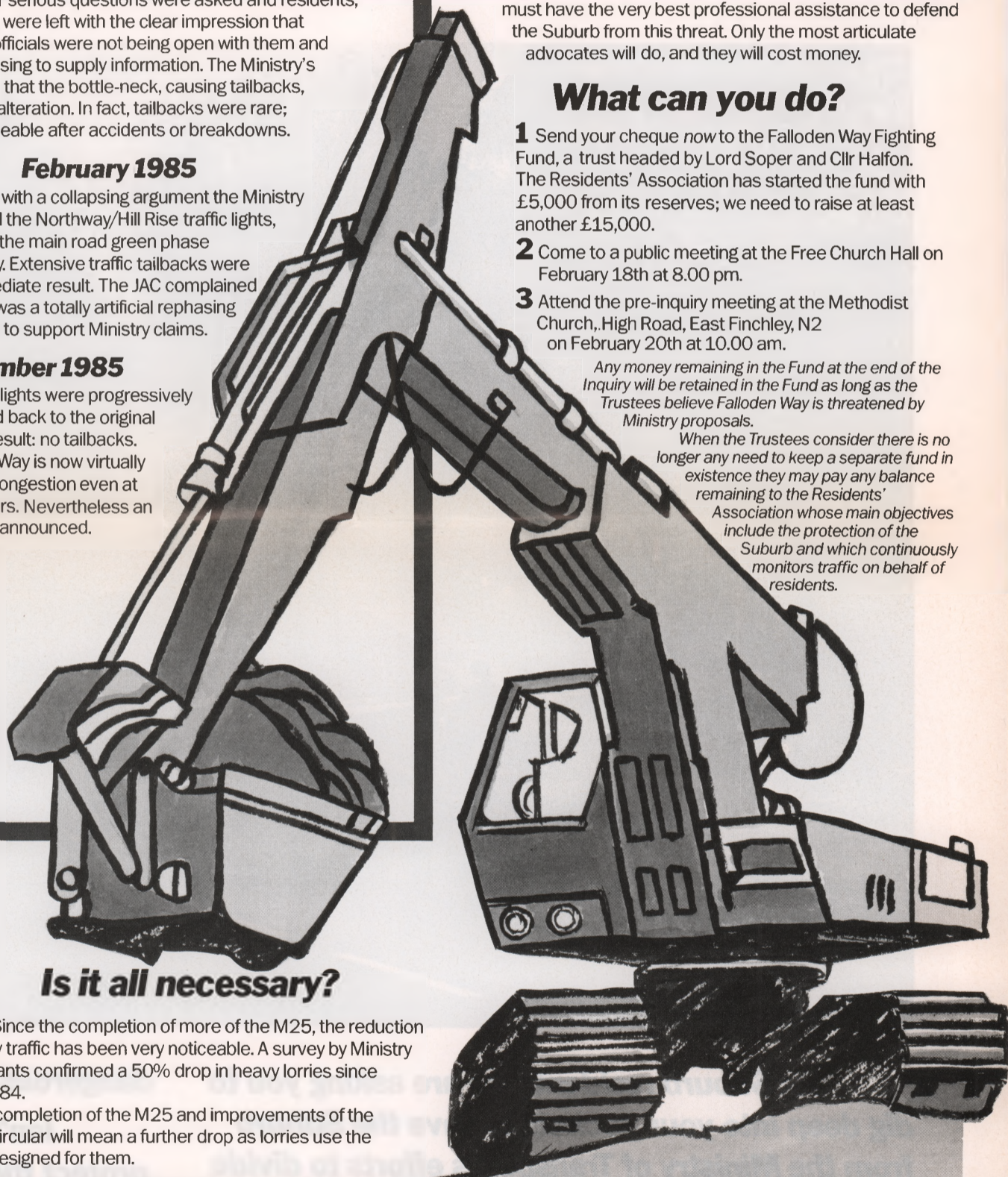
If approved the Ministry's scheme for Fallodden Way will mean the end of any chance of retaining the integrity of the Suburb. We must have the very best professional assistance to defend the Suburb from this threat. Only the most articulate advocates will do, and they will cost money.

## What can you do?

- 1 Send your cheque now to the Fallodden Way Fighting Fund, a trust headed by Lord Soper and Cllr Halfon. The Residents' Association has started the fund with £5,000 from its reserves; we need to raise at least another £15,000.
- 2 Come to a public meeting at the Free Church Hall on February 18th at 8.00 pm.
- 3 Attend the pre-inquiry meeting at the Methodist Church, High Road, East Finchley, N2 on February 20th at 10.00 am.

*Any money remaining in the Fund at the end of the Inquiry will be retained in the Fund as long as the Trustees believe Fallodden Way is threatened by Ministry proposals.*

*When the Trustees consider there is no longer any need to keep a separate fund in existence they may pay any balance remaining to the Residents' Association whose main objectives include the protection of the Suburb and which continuously monitors traffic on behalf of residents.*



## Is it all necessary?

No. Since the completion of more of the M25, the reduction in heavy traffic has been very noticeable. A survey by Ministry consultants confirmed a 50% drop in heavy lorries since mid-1984.

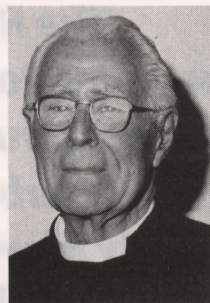
The completion of the M25 and improvements of the North Circular will mean a further drop as lorries use the roads designed for them.

## Now what are they up to?

The Ministry has selected one of their five schemes, the 'Yellow' tidal flow, despite the fact that residents had decisively rejected them all, the Yellow Scheme by 95%.

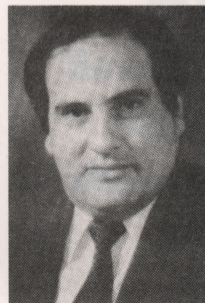
### This scheme would:

- 1 Destroy mature trees along Fallodden Way.
- 2 Remove ALL the pedestrian refuges.
- 3 Replace them with an enormous, high pedestrian footbridge and a single crossing point without a refuge.
- 4 Ban ALL right turns into and out of side roads and entries - 24 in all!
- 5 As a consequence add greatly to traffic flow in surrounding residential roads and well beyond.
- 6 Put in jeopardy the remarkably good safety record of Fallodden Way.
- 7 Increase congestion and traffic danger around Brookland School.
- 8 Use a totally untried system of runway lights set in the road surface.
- 9 Revert to six huge overhead gantries if the runway lights prove a failure.
- 10 Add a further 31 illuminated warning signs to the Suburb.
- 11 Encourage more traffic to forsake the M25 and North Circular roads.
- 12 Intensify the severance the Department of Transport has already inflicted on the Suburb.
- 13 Pave the way for further widening and linking of Henly's Corner and Archway Road schemes.



"The Suburb as a community will be very seriously damaged by the Fallodden Way scheme. Please come to our aid and help to save our Suburb."

Lord Soper



"I make this appeal to fellow residents to be generous in giving to this Fund to save our community from being irrevocably divided."

Clement Halfon

## Fallodden Way Fighting Fund

I/We wish to donate the sum of £..... in support of the fight against the Ministry's scheme for Fallodden Way.

I/We enclose our cheque payable to the Fallodden Way Fighting Fund.

Signed \_\_\_\_\_

Full name \_\_\_\_\_

Address \_\_\_\_\_

\_\_\_\_\_

\_\_\_\_\_

Please send now to: The Trustees, Fallodden Way Fighting Fund c/o New Hampstead Garden Suburb Trust Ltd, 862 Finchley Road, Hampstead Garden Suburb, London NW11 6AB.

(If receipt required please send a stamped addressed envelope)

(Personal enquiries should be addressed, not to the Trust, but to RA Chairman G N Mandelson on 458 2763)