

PCC SUMMER FESTIVAL



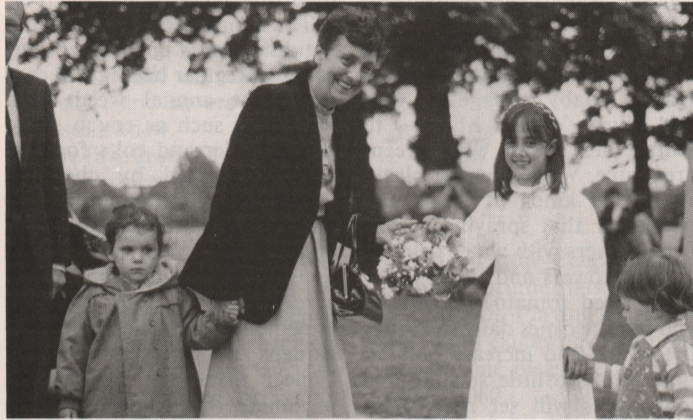
Clowns and playbus.

Ambitious is the word for the, now established, Summer Festival including, as it did, a full size play bus, an inflatable trampoline, a folk band, magician, clowns and a storyteller as well as lots of more traditional stalls and fun and games.

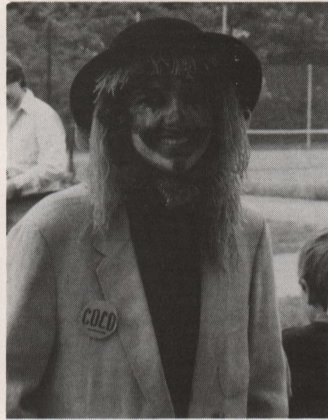
Held on Lytton Playing Fields the Festival was organised by Anita Houghton, the Centre's fund raiser, and the PCC committee. It was opened by Barnet's Mayor Mrs Barbara Langstone who, with her husband Roy, took the opportunity of entertaining her granddaughter Gemma for the afternoon. RW



Bugs Bunny



Alexandra Tarn presents a welcoming bouquet to Mrs Langstone.



and another clown.

Term-Time Activities for 3-5s

Fun with Music
Has now been operating for a year, sessions run by Dilys Thomas very popular. Thursdays 2.15-3.00 pm, use of percussion instruments, singing to piano.

Fun with Dance

A new activity starting in September, Wednesdays 2.15-3.00 pm, will be run by Judy Townley.

Places are limited and bookings are now being taken for the Autumn Term. Please ring 458 6100 Liz Tarn for information and/or registration.

SEABROOK & SONS (GOLDERS GREEN) LTD

FINEST SCOTCH BEEF,
WEST COUNTRY LAMB,
POULTRY, GAME

CUSTOMER DELIVERY SERVICE
DAILY

26 TEMPLE FORTUNE PARADE, LONDON NW11 0QS
Telephone 01-458 4313/4

HUGH LLOYD Chemists

(Stephen Simbler Ltd)

Specialists in High Class
Cosmetics and Baby
Goods

FOR FRIENDLY SERVICE

34 MARKET PLACE, HAMPSTEAD
GARDEN SUBURB, LONDON
NW11 6JJ

TELEPHONE: 01-455 9090/8227

Horticultural Society

At the end of May HGS Horticultural Society got the season off to an excellent start by holding a Plant Sale and coffee morning at Fellowship House. Suburb residents flocked to buy their summer plants from such a good local source and at very reasonable prices, and profits were divided equally between the Horticultural Society and the Fellowship. In addition to the vegetable, herb, fruit and flower seedlings available, one of the big attractions was the very pretty arrangements sold by the HGS Floral Arrangement Club. The Society always welcomes new members. New Suburb residents, or anyone who has never joined before, can apply for membership at any of the summer flower shows, or by contacting the Chairman, Mr Wheatley on 455 2820. MH

FITTING MEMORIAL

The late Mr Herbert Loewi of Hampstead Way was a great lover of gardens and the Suburb. His own garden is a fine example of what can be achieved in a small space. It was his habit to walk every day in the area around his home, at first to complete his recovery from a heart attack and subsequently to continue his enjoyment of the Suburb and its trees, shrubs, flowers and open spaces.

When Herbert Loewi died following a further heart attack his many friends were keen to remember him in a manner which was appropriate to his interests and would further enhance the ambience of Suburb, with the result that a bench has been provided on the corner of Meadway and Hampstead Way and plantings in the triangular garden between Willifield Way and Hampstead Way have been increased by the addition of flowering trees and shrubs and a collection of heathers. PV

SPLENDOURS OF THE RAJ

Philip Davies' new book "Splendours of the Raj" is blessed with that rare thing in the realm of architectural history: an immediately accessible and self contained subject which relates directly to a social and political era. It examines the buildings erected in India by the British between 1660 and 1947.

Mr Davies, who has lived on the Suburb throughout his life, studied British imperial history at Cambridge prior to practising as a town planner and specialising in the conservation of historic buildings. He has visited India several times and observes that of all the onetime colonies it contains the richest and most coherent design tradition, resulting from the confrontation of architectural styles, Classical, Gothic, Moghal, Saracenic.

The book represents a drawing together of the threads and interests of Mr Davies' life, tracing comprehensively the development of conscious style from the earliest colonists' work, frankly naive classical designs such as St. Mary's Church, Fort St. George, through to the grand climax of all colonial building, Lutyen's New Delhi, where a style was evolved, both highly personal and which perfectly reflected Anglo-India. En route, the baroque marvels of Madras and Calcutta, the gothic exuberance of Bombay are described and related to historical events: the rise of conscious colonialism, the Mutiny, stressing the parallel between political power and architecture as its concrete expression.

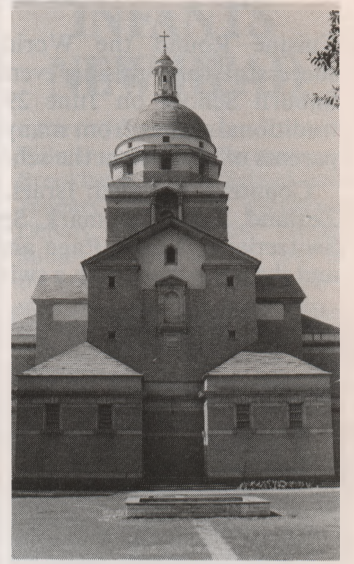
A fascinating chapter devoted to "Saracenic Dreams" contains a description on one architect's answer to the question: how should a European design a building in India? "... multi-coloured Moghal domes, Buddhist stupas, canopied balconies, arcaded verandahs and soaring high over the whole vast red brick pile, a bulbous domed minaret with its upper stage forming a lighthouse equipped with the latest dioptic light". This was the Law Court at Madras, designed by J. W. Brassington in the 1880s.

Two further chapters describe the development of Cantonment and Residency, Bungalows and Hill station. The bungalow in particular relates the whole movement to the human domestic scale. From modest beginnings

as a "bangala" or village hut, to the splendidly opulent 19th century structures, high gabled, verandah surrounded and with a lower roof reaching out over the carriage drive to shelter the horses from the midday sun, while visitors took lunch in the cool punkah swept air within.

The illustrations are copious, many of them necessarily historical in that the buildings shown have been demolished or sadly altered. One startles the Suburban eye in particular: Henry Medd's Cathedral Church of the Redemption, New Delhi is at first glance our own Free Church. A second glance reveals differences drawn from Palladio which would have made the Free Church a more equal companion to St. Jude's.

Mr Davies rightly describes the Viceregal Palace as one of the masterpieces of 20th century architecture. His excellent book traces the long crescendo of inspiration which led to that masterpiece, and increases our respect for it in the process. CG ("Splendours of the Raj" by Philip Davies: John Murray, £25.00.)



RICHARD WILLEY

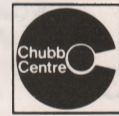
Richard Willey, the unsuccessful Labour candidate in the recent Brecon and Radnor by-election and his family have close connections with the Suburb. They lived at 11 North Square for 35 years and Richard went to King Alfred School. From there he went onto Cambridge where he studied history and stayed on to do a doctorate. His father, Fred Willey, was a prominent Labour MP and served in the government.

Fred Willey was also active in Suburb affairs and was closely involved in getting the New Hampstead Garden Suburb Trust established, and was an elected member of the Trust Council until 1976. CK

RINGWOODS OF TEMPLE FORTUNE

3 Ashbourne Parade, Finchley Road, NW11

- TIMBER, PLYWOOD, HARDBOARD AND MOULDINGS
- FORMICA, CONTIPLAS & CONTIBOARD
- PLASTIC RAINWATER & WASTE
- COPPER TUBE & FITTINGS
- DULUX, BERGER & CROWN PAINTS
- HAND & POWER TOOLS
- A VAST RANGE OF HOUSEHOLD FITTINGS
- ALL TYPES OF KEYS CUT



CHUBB LOCKS SUPPLIED
AND INSTALLED

Everything for the
HOME and PROFESSIONAL HANDYMAN
Tel: 01-458 5560

DRUCE

incorporating BASIL TEMPLE & CO.

EST
1822

16 17 Hallswelle Parade,
Finchley Road, NW11

209 0011

HAMPSTEAD GARDEN SUBURB NW11



SOLD
IN
8 HOURS!!

PHONE TODAY, WITHOUT DELAY FOR EXPERT ADVICE
ON BUYING OR SELLING IN THE SUBURB!

HEAD OFFICE
486 1252

PAKER STREET
486 9851

BAYSWATER
262 1085

HAMPSTEAD
431 1122

KNIGHTSBRIDGE
581 3771