

# Winter colours in Northway Gardens

BRIAN INGRAM

By Winter all the colourful leaves will have gone and visitors will then see the amazing reds of the stems of the Cornus plants (mainly these plants are Cornus Midwinter Fire). We are gradually planting more Cornus around the Gardens.

Last year's visitors were often transfixed to see this brightness in darkest February and we hope you will enjoy it as much in 2022.

Due to popular demand we now keep these Red stems until late April before hard pruning for next season.

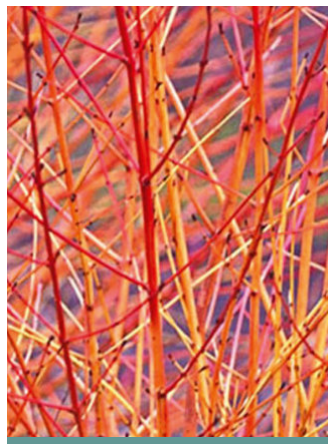
In winter do look out for the bright golden shrubs at the back. These are Pittosporum Warnham Gold. Of little interest in Summer they look fabulous in Winter don't you think?

Our wonderful Roses team have carefully pruned all the rose bushes for their Winter rest. Bags of compost and other goodies will have been spread around.

Recently NGO was very pleased to receive the 2021 Award for Excellence by The London Gardens Society. This is, of course, a terrific compliment to the volunteers and supporters.



Winter Pruning



Cornus Midwinter Fire



Pittosporum Warnham Gold



Volunteer Jane with the Certificate of Excellence (Photo: Brian Ingram)

# My Kidasha Trek to Rome, without leaving home

MYKE JACOBS

After 214 days, I have arrived at the Italian-French border on my virtual trek from London to Rome for Kidasha. I am now peering through the Italian Alps down to Turin and the River Po. On the way, I have: walked more than 665 miles; taken more than 1.5 million steps; completed over 7,300 laps of the field; trekked over 58% of the path from London to Rome and raised over £11,900 for Kidasha (66.2% of Target – £18,000)

The situation in Nepal remains critical. I keep on mentioning this, but I make no apology because it's true and the need is very great: see <https://bit.ly/3noZHIY>.

A recent UNICEF survey showed that most Nepali school children have not attended any classes in the past two years and have missed at least 70 weeks of school since Covid hit, one of the highest rates in the world.

The impact of the pandemic on education is enormous and is a major priority for us in the

coming year. Very many families have had little or no income and very little (if any) government support. Parents have to choose between feeding their families and paying off mounting debt or buying uniforms and books. An even bigger challenge is actually persuading children to return. Many fear being far behind their peers who have had the benefit of on-line learning; others are victims of high-risk behaviours or simply have to seek work to support their families or just survive. Often, girls are unable to return because of pressure to stay at home to help with domestic chores, looking after siblings etc or get married and move in with their husband's family. So many of the gains we have made in getting children out of child labour and into school and reducing child marriage have sadly been reversed by the wider impact of COVID. So much to do now!

Please donate to Kidasha ([www.kidasha.org](http://www.kidasha.org)) at <https://bit.ly/3eP5x9g>. (World Walking does not charge a fee).



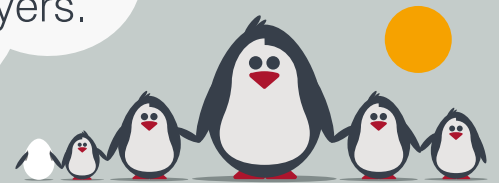
**Fabulous Fungus** There are spectacular displays of fungi this year. These examples were found on the Heath Extension and Big Wood.



Photos: Shelley-Anne Salisbury

## Specialist family lawyers.

RAYDENSOLICITORS



There might be challenging times in your life when a family law solicitor can help:

- Have you decided your marriage or relationship is over, are you unsure about your family's future?
- Do you need to protect your children, or understand the options to resolve arrangements for your children?
- Do you need a pre nuptial or post nuptial agreement to protect assets?
- Are you moving in with your partner and need a cohabitation agreement?

Choosing the right family lawyer for your circumstances is crucial. Rayden Solicitors are family law specialists with many years' experience; we provide tailored and practical solutions in all areas of family law - divorce, relationship breakdown, child arrangements and financial settlements.

Bespoke advice from Rayden Solicitors in Hampstead.

Contact us, [enquiries@raydensolicitors.co.uk](mailto:enquiries@raydensolicitors.co.uk)

HAMPSTEAD  
6a Hampstead High Street  
London  
NW3 1PR.  
Tel: 020 3925 4809.

RAYDENSOLICITORS  
[www.raydensolicitors.co.uk](http://www.raydensolicitors.co.uk)

We are available on

