

# Geocaching

Never heard of it? Well listen up!

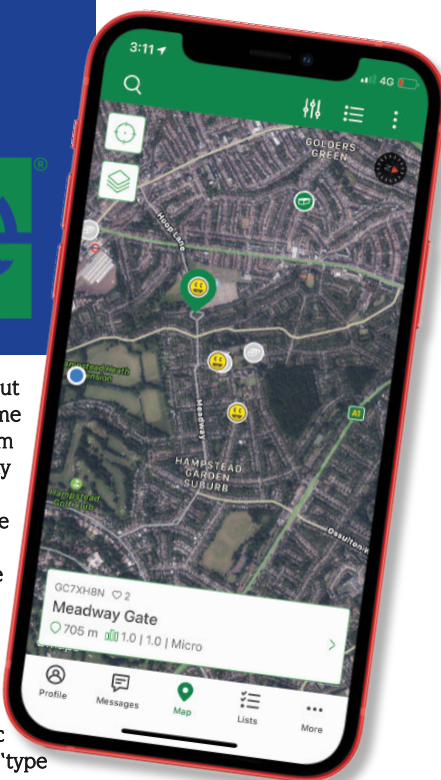


GEORGIA SALISBURY

For many people, the Covid pandemic has encouraged us to rediscover the wonders of the great outdoors. Whether that be through daily walks, runs, or



just sticking your head out of the window to get some fresh air in between zoom sessions, there are plenty of options to reconnect with nature. But for some of us, getting that motivation to go outside and actually get some exercise has proved tricky. This was certainly true for me, until I discovered geocaching. The National Geographic defines geocaching as a 'type of global treasure hunt' or as a 'series of hide-and-seek games, where hiders provide online clues for seekers'. I couldn't describe it better myself – once you've downloaded the official geocaching app, the game is on. The app contains a map which will show you whether there are any



caches (usually small boxes or items) hidden nearby, and utilises GPS and co-ordinates to help you locate the cache. The app also offers hints to the location if needed! Once you have found a geocache, you can log your find on the app, but don't

forget to return the cache where you found it – this is the most important rule of geocaching. The cache will usually contain a logbook for you to record your name or initials (bring a pen!), and sometimes if you're lucky, some small trinkets. You can even leave your own trinkets in the cache for others to find, but avoid leaving food or anything valuable. The caches themselves can occasionally be tricky to locate, but I often feel that this can make finding them all the more fun. It really is like playing a massive game with a global community, but one you can play at your own pace and in your own time. It can turn a simple walk into a mission, and it can often take you to places you may never have visited otherwise

The Suburb is lucky to play host to a handful of geocaches. I've managed to locate four, and in doing so I got to really appreciate this area and all of its charms. Just be prepared to get muddy while searching for the caches in the Heath Extension and strange looks whilst poking about in nature!

There are obvious safety rules one should take into account while geocaching; namely avoid going after dark, or going alone if you're a minor and if you're geocaching in an unfamiliar area, do some research on the area



beforehand. No geocaches should be hidden on private property, so don't try and access somewhere off limits. However, don't let these rules put you off. Geocaching is a fun and free activity that provides motivation to get outdoors and is open to everyone.

For more information, check out the official Geocaching website and app.

Happy searching!

*\*It should be noted for full access, the app does have a paid subscription, but there are still plenty of geocaches to find in the free version!*



Photo: Laurence Wolff

## Annual Free Church Bazaar is back bigger and better than ever

LORNA PAGE & EMMA HOWARD

The Free Church Bazaar found a new home this year moving to the church rather than using both halls in Northway. This gave a big open space with plenty of ventilation and enabled everyone to move freely. It was a very happy community event and attracted many visitors who enjoyed time to get together and the traditional stalls, including the very popular Traidcraft stall selling fair trade items. In addition wonderful tapestries created by the Church's talented sewing group were on display to be admired by all and cards depicting these beautiful pieces were on sale. All of this, along with a plentiful supply of refreshments and of course a chance to 'Guess the weight of the cake!' The total raised was over £3,000.

Well done to all involved in organising this event and making it such a success.

**Welcome to St Jude's**  
Every Sunday at 10.30am. All welcome.

**SAINT JUDE-ON-THE-HILL**  
THE PARISH CHURCH OF HAMPSTEAD GARDEN SUBURB  
[www.stjudeonthehill.com](http://www.stjudeonthehill.com)