

Virtual Museum The Great Flood Collection

JUDY SMITH

The Suburb's Virtual Museum, run by HGS Heritage, is the perfect place to record in perpetuity those events that are so significant, that they deserve a special place in the Museum. The weather events of Monday July 12, when several inches of rain fell in a matter of two to three hours and resulted in so much disruption and flooding, was just such an occasion, as you can see from this edition of Suburb News. And, of course, with so many great images and videos posted onto the HGS List, it hasn't been difficult to get some sense of the effect of this amount of rain in such a short time. We have launched a new Collection – The Great Flood of 12 July 2021. We certainly hope that this extreme weather event will not be repeated, but we are all aware of changing weather patterns and global warming. This Collection is still open for more photos, videos and accounts of the devastation caused by this extreme weather event.

Ongoing updates to the Museum website include improved access of video material and Suburb News past editions posted in the Museum. We are also changing the way the Museum can be accessed. There will be a new Home Page and you will be able to search via either a Map or a Timeline, in addition to all the existing access paths. We will let you know in Suburb eNews when the new-look Museum is launched.

We are still taking contributions for our Covid Collection. The pandemic – which is still ongoing as we all know – is affecting so many aspects of all our lives. None of us know when or if 'normality' will return, but the enormous changes that Covid has brought to us all deserve to be recorded in the Museum that reflects the lives of HGS residents.

HGS Heritage will also be launching a Collection dedicated to the iconic spire of St Jude on the Hill and the Time Capsules – both old and new – that were secreted in the weather vanes.

Panoramic shot of flooded Hampstead Way garden (Photo: Adam Lauffer)

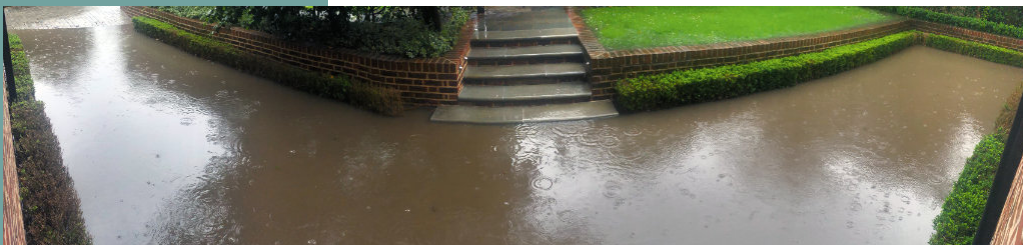


Photo: Simone Halfin

Celebrating Bach's birthday at Fellowship House

SIMONE HALFIN

A wonderful Concert was held at Fellowship House, in celebration of Bach's birthday. Originally scheduled for March, his actual birthday, Covid prevented it, but fortunately it was able to go ahead in June. Organised with her usual skill by Anete Graudina, the talented internationally acclaimed violinist, it featured five of her students, ranging from ages 14 to 18, as well as old friends she has played with before. Pianist Masayuki Tayama, played a stunning Piano Concerto and the smiles on 14 year old Catherine Benbow's face told it all as she performed her

very first concert – this youngster looked so proud to be there. Although Catherine just completed her grade 8 exam with distinction, she told Anete afterwards she was so inspired she was going straight home to practise even more. Another member, Gudrun Edwards, was leader of an orchestra in Kew and had travelled over to be part of the team. There was an air of jubilation and excitement to be playing once again to a live audience. Those sitting outside under an awning were kept snug with Anete's thoughtfully supplied rugs. The concert ended with Benjamin Britten's Sentimental Sarabande. A fitting finale. The next concert is planned for October 2021.

 On HGS Trust list of Recommended Contractors



Repaircare London — Ltd — EST. 1999

Specialists in returning historic wooden sash and bay windows to their former glory

We love turning old, tired-looking properties back to their former glory, with the correct repair methods and the correct application of paint.

For the past 30 years we have operated in and around the North London Hampstead, Highgate area.

Hampstead | Highgate | Muswell Hill | Primrose Hill

For a free quote and advice, please call Paul or visit our website
07904 582816 | www.repaircarelondon.com



Window Renovation

We would welcome the opportunity to earn your trust and deliver you the best service in window renovation, with the highest standards in decoration.

Repaircare London have worked on many neglected properties – visit our website to see our work.

Internal & External Decorating

We offer over 30 years of experience of decorating internally and externally, from large mansion blocks, colleges and schools to domestic houses within Highgate, Hampstead and Hampstead Garden Suburb.

We believe that we are the best in the business at what we do.



Maintenance Plan

Save money – spread the cost of your window restoration.

We are delighted to be able to offer our new window and property maintenance plan, a great way to keep on top of your property's essential needs. All sizes of properties and buildings covered, including windows and internal and external decoration.