



Photo: Google Earth

Henrietta's Community Fruit Orchard

MARIA SCHLATTER

By the end of this autumn, Lyttelton Playing Fields will have a delightful new addition. The Friends of Henrietta's Community Fruit Orchard and other resident volunteers will be planting a new orchard with a historic selection of fruit trees. This exciting project was initiated by the HGS Residents Association and has been in preparation since last year.

The tree varieties chosen by the Friends of Henrietta's Community Orchard have been specially grafted and reserved for us by Grow at Brogdale, home of the National Fruit Collection in Kent, and should be ready for planting by about mid- November.

The new community orchard will continue the fruit-growing traditions begun during the foundation period of Hampstead Garden Suburb to bring benefit and pleasure to the community. We are very grateful that local residents and schools have shown such a keen interest in supporting this project.

It looks like it is going to be a real community effort. Both the RA and Barnet Council have been very engaged in preparing for it. Bishopswood Bowling Club very kindly offered their assistance in supplying water for the new orchard, and the Friends of Big Wood are planning to lend practical support with volunteer labour and tools when it comes to planting the young fruit trees.

We are scheduling another meeting for the Friends of Henrietta's Community Orchard to organise the planting dates and related activities at the end of September. Existing Friends of Henrietta's Community Orchard will be contacted about this automatically, and if you also want to get involved or just find out more, please email: fruitorchard@hgsra.uk or call 020 8458 2402.



Apple picking at Brogdale National Fruit Collection (Photo: Maria Schlatter)

dining, and entertainment hub. Thameslink is building a new station at Brent Cross West that will be connected with new bus routes. This new station has been designed for additional platforms to be built for a new overground station, that forms part of the planned West London Orbital overground line. It will use the existing freight railway lines from Cricklewood to Brentford that will be upgraded to create a new passenger line terminating at West Hampstead and Hendon Thameslink. This is part of The Greater London and Barnet's Plan to improve east – west public transport routes.

In adjoining boroughs, significant infrastructure projects are underway, such as the Elizabeth Line (Crossrail 1) and the contentious high-speed railway HS2. Barnet will collaborate with adjoining boroughs of Haringey and Enfield to create an opportunity area in New Southgate, where a Crossrail 2 station is proposed. Within Barnet, other opportunity area developments are progressing in Colindale and Brent Cross, plus substantial new housing in Mill Hill East's Millbrook Park.

To the west, between Willesden, Acton and the Park Royal Industrial Estate, the Oak Common Development Zone, with new housing, retail and commercial space and multiple rail inter-change links, will include a massive new station for HS2, Crossrail and Overground trains, including the planned West London Orbital overground line. The west of London from Old Oak Common out towards Heathrow has the potential to become a major growth zone, not dissimilar in scale to Canary Wharf and the other docklands developments in East London.

What impact could these changes have for us within the Suburb in the future? Hampstead Garden Suburb will continue to be a Conservation Area and might soon be classified as a Protected Area. Our properties cannot currently outwardly change in appearance, and our open spaces remain protected. Overall, we should benefit from already permitted and proposed development changes happening within other parts of Barnet. Lack of parking provided in new residential complexes should encourage more residents to use public transport, cycle or walk. Statistics show that the younger generation is less interested in car ownership and overall vehicle sharing is increasing with Zip Cars being such an example.

As part of the proposed planning law reforms, administrative processes associated with household planning applications will be simplified. As the Suburb is already mainly built up, no major redevelopments are likely to occur within its boundaries. Our residents will hopefully be protected from mass development and further housing densification threats, but we will continue to experience gradual change. Our basic street utility infrastructure will need to be modernised reflecting changing consumer demands and the need to use modern materials.

Copper telephone lines and associated infrastructure are likely to be removed from our streets and replaced by fibre cabling to our homes. Huge mobile masts on sites such as the one in Golders Green railway sidings could soon be removed as more of us adopt 5G and its successor mobile technologies that are better suited to working with shorter distance and much smaller radio aerials. As we make greater use of zero-emission vehicles, we will need more street charging points. Then there is the question of hydrogen fuel and its role in powering transport and maybe heating our homes. Barnet's Local Plan makes references to such changes, and new supporting policies continue to be developed.

So, even without significant redevelopment schemes within the Suburb, there remain plenty of challenges that doubtless the committees of the HGSRA and The Hampstead Garden Suburb Trust will need to consider as they help protect the interests of residents.



Photo: Philip Okrent

Cracking the problem

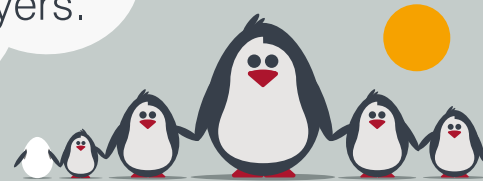
PHILIP OKRENT

Following a letter that I wrote to the RA following the last edition of Suburb News regarding the terrible state of many of our pavements, I was asked if I would be willing to be co-opted to the Residents Association with a brief to report issues regarding dangerous pavements in the Suburb. Having agreed to that, I have spent the last few weeks fielding reports from residents and forwarding onwards to our local Councillors. I have also met with relevant Barnet officials to show them some of the issues we have here.

I am really delighted to say that each reported incident has been dealt with by the Council and repair works are in hand. So, if you are concerned about the pavement near your house being dangerous then please, please contact me at pavements@hgsra.uk and I will happily take up the problem with our Councillors and hopefully get the issue resolved relatively quickly. Please send photos and precise location (e.g. road name and house number) where possible.

Specialist family lawyers.

RAYDEN SOLICITORS



There might be challenging times in your life when a family law solicitor can help:

- Have you decided your marriage or relationship is over, are you unsure about your family's future?
- Do you need to protect your children, or understand the options to resolve arrangements for your children?
- Do you need a pre nuptial or post nuptial agreement to protect assets?
- Are you moving in with your partner and need a cohabitation agreement?

Choosing the right family lawyer for your circumstances is crucial. Rayden Solicitors are family law specialists with many years' experience; we provide tailored and practical solutions in all areas of family law - divorce, relationship breakdown, child arrangements and financial settlements.

Bespoke advice from Rayden Solicitors in Hampstead.

Contact us, enquiries@raydensolicitors.co.uk

HAMPSTEAD
6a Hampstead High Street
London
NW3 1PR.
Tel: 020 3925 4809.

RAYDEN SOLICITORS
www.raydensolicitors.co.uk

We are available on

