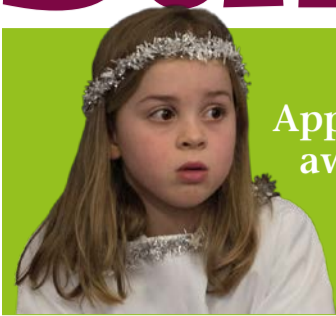


Suburb News

Hampstead Garden Suburb
Residents Association



Apprehensive angel
awaits her moment,
pictures p5



Christmas pud,
Italian style,
story p3

Professor Tim Kendall
gives a talk about
Mental Health, p4



TfL complacent over Suburb road safety?

After Suburb News reported on the RA Open Meeting on the topic of Pedestrian Safety in our last issue, RA Roads & Traffic Committee made the following news known to residents who are members of the RA and also subscribe to the invaluable e-mail forum, The HGS List.

"Residents may wish to know that Barnet Council, on October 31, passed Cllr Rohit Grover's motion on Safety of the Ossulton Way/Kingsley Way/A1 Junction.

"The Residents Association had met with Ward Councillors twice on site, as reported in last issue of Suburb News (foot of

page 3). At the July meeting, TfL were also represented but not at a senior level.

"The motion calls for: 'a further meeting to take place, at a high level, where those at TfL with senior decision-making authority are required to seriously consider what can be done to improve pedestrian safety. Options could include a longer all-red phase at the Kingsley Way/Ossulton Way/A1 junction where traffic from all sides is stopped, an improved pedestrian crossing facility, or speed cameras for this stretch of road generally.'

"This is the crossing used frequently by visitors to the surgery, where at the lights by Barclays Bank an elderly pedestrian was killed earlier in the year.

"Councillors are now pressing for the meeting with TfL to take place as soon as possible, and are keeping in touch with the Roads & Traffic committee of the RA."

Suburb News feels TfL are very slow at responding, even when the safety of road users is at stake, and seem to make change very difficult to accomplish. We should all wish the RA's Roads & Traffic Committee and our Councillors the best of luck.

Fellowship welcomes in the New Year

On a cold grey London afternoon, a packed Fellowship House sparkled into 2018 with its traditional members' New Year party. Good fortune had smiled

and we could welcome again the talents of international mezzo soprano Catherine Hopper accompanied at the piano by musical polymath and Suburb

resident, Barry Millington. The varied programme impressed and enchanted: from Britten to Madeleine Dring by way of Michael Head and Jonathan Dove; from Weill to George Gershwin via Jerome Kern and Flanders & Swann.

Afterwards, friends and neighbours chatted, plates of sandwiches and cakes were enjoyed, crackers too. As usual, none of this would have been possible without days of behind the scenes planning and hard work by Fellowship Trustee Irena Colomb and her team of helpers. Charm, style, magic. Fellowship at its best.

Should readers wish to find out more about the plethora of activities available at Fellowship House, the Suburb's Community Centre, they should visit www.fellowshiphouse.co.uk or phone the Chairman, John Mathias, on 0208 455 7334.



Barry Millington and Catherine Hooper.



CESAR RODRIGUEZ-DURAN

(Above) Yet again, New Year's Eve Fireworks didn't disappoint. Full article and more pictures, back page.
(Below) Central Square and St Jude's takes on a peaceful tranquility after a dusting of snow.



JULIAN GIBBINS

Hallowe'en on the Suburb

Fellowship was invaded by 45 of the Suburb's young people (18 months to 7 years), for the annual Hallowe'en party! All had a lot of fun making and decorating masks, listening to the scary story teller, having their faces painted and eating the large selection of home made snacks and cup cakes. Thanks go to Vera Moore and her daughter for supervising the artwork and face painting, the Mums and Dads for helping, and the HGS Resident's Association for sponsoring the popular event.

TONY BRAND



The Suburb young mesmerised with tales of Hallowe'en.

HELLA SCHRADER

WE DELIVER

For almost 40 years now we have been serving the needs of the Suburb and we have enjoyed every moment of it. Our service extends from Cottages to Castles and there is no property which is too small or too large for us to handle.

We are delighted to introduce you to the Glentree New Homes office, where we are able to offer the largest selection of new developments in North West London, either as a home or as a buy-to-let investment.

At Glentree Rentals, our bespoke letting service, we are bristling with a wide selection of fine homes to rent in all price ranges and why not enquire about our specialist Suburb Sales division which deals exclusively with properties such as yours and has a house-by-house understanding of this very special area.

We believe we can make a substantial difference to you by selling your cherished home for the highest possible price when the time is right ... and not before, of course.

Our well known International connections allow us the unique facility of attracting buyers/tenants not only from the locality, or within the UK, but also from virtually every corner of the globe. A wider globalised audience means usually better terms for you.

We are the longest serving agents in the area, under the same Management for over 40 years and if you want to know what's going on in the market or check the value of your home, please feel free to pop in and you are welcome to use our private clients' car park (at the rear of our offices).

No obligation, no fuss, just good old fashioned service.



The 106th RA AGM

**will take place on Monday 26 March 2018
at 8pm in the Henrietta Barnett School Hall,
Central Square.**

Nominations for the posts of officers and members of the Council must be received by 16 March 2018. They should be submitted in writing, signed by proposers and seconders and have the consent of nominees.

Please send notices of motions and nominations to:

The Assistant Secretary, Rosemary Goldstein, 1a Church Mount, N2 0RW
(Agendas will be available on the RA website by 12 March 2018)